

Self-evaluation report

Study field "Architecture and Construction"

2021 / 2022 study year

RISEBA University of Applied Sciences

This report is extraction from self-evaluation accreditation report submitted to AIKA. In case of confusion about references, numbering or appendices, refer to the original document (submitted 5.07.2022).

Table of Contents

| | |
|--|----|
| Study field..... | 3 |
| 1.Information on the Higher Education Institution/College | 3 |
| 2.1. Management of the Study Field | 13 |
| 2.2. Efficiency of the Internal Quality Assurance System..... | 31 |
| 2.3. Resources and Provision of the Study Field | 46 |
| 2.4. Scientific Research and Artistic Creation | 67 |
| 2.5. Cooperation and Internationalisation | 76 |
| 2.6. Implementation of the Recommendations Received During the Previous Assessment Procedures | 85 |
| Annexes..... | 89 |
| Other annexes | 90 |

Study field

1. Information on the Higher Education Institution/College

1.1. Basic information on the higher education institution/ college and its strategic development fields.

RISEBA University of Applied Sciences is a private higher education institution with almost 30 years of experience, which offers a competitive education and prepares high-level specialists and managers for business and creative industries working in the international environment. The university was founded in 1992. The head office of the university is situated in Riga and it has a subsidiary in Daugavpils, which provides [lifelong learning courses](#). Secondary vocational education is provided by the Vocational Secondary School of RISEBA "Victoria"

RISEBA has been accredited by the Ministry of Education and Science, as well as it has obtained International Quality Accreditation from the International Association for Management Development in Dynamic Societies (CEEMAN).

RISEBA University of Applied Sciences is the first and only higher educational establishment in the Baltic states that have obtained the prestigious **European Foundation for Management (EFMD) programme accreditation EPAS**.

The three faculties of RISEBA - Faculty of Business and Economics, Faculty of Media and Creative Technologies, Faculty of Architecture and Design provide an opportunity for obtaining education ranging from Bachelor's to Doctoral level by offering full time (day), part-time (evening) and part-time (remote) forms of studies in Latvian and English.

Since 2013, RISEBA Creative Business Incubator has been in operation at the university. It offers an opportunity for developing business and social interaction ideas of the students.

In 2019, due to the rapidly changing external environment, RISEBA formulated a new mission, vision and values for the university.

RISEBA Mission

"Our principal objective is the preparation of socially responsible business people, leaders, managers and professionals for work at Latvian and international companies, as well as the creation of a learning community that strives to become an international competence centre in the area of entrepreneurship, arts and technologies by providing a high quality, interactive, student-orientated, research and innovation-based multiple profile higher education at bachelor's, master's and doctoral levels, as well as lifelong learning".

RISEBA Vision

"We consider ourselves a sustainable and internationally recognised university of business, arts and technology - a university with the spirit of entrepreneurship that is suitable for people with the highest variety of character traits, educational and professional development needs thanks to special training methods and an innovative approach, which include the interdisciplinary approach, where entrepreneurship meets art and serves as a platform for the exchange of contracts for professionals of business and creative industries".

RISEBA values

Openness - *"We work and operate in an open and orally supportive environment, governed by mutual trust and respect. Our spirit of entrepreneurship and attitude enables us to promote*

openness to innovation and creativity”.

Excellent service - *“ We focus on excellent service and high-quality performance in all our operations”.*

Diversity - *“We ensure a diverse and inclusive multicultural environment by offering different study programmes, learning formats and languages of instruction”.*

Dialogue - *“We constantly co-operate and share our knowledge and experience with a variety of stakeholders, including companies and industry professionals, our students, alumni, lecturers, employees and other stakeholders”.*

Lifelong learning - *We promote continuous personal and professional growth among our students and partners, as well as among ourselves”.*

Ethics and social responsibility - *“We pursue socially responsible operations and prepare socially responsible leaders and professionals”.*

Influence - *“We act in a manner that leaves a positive impact on the rapid and sustainable growth of society”.*

RISEBA implements 5 study directions. Our largest study direction, which has resulted in the development of 13 study programmes is “Management, Administration and Real Estate Management”, since, historically, business administration programmes have been a part of the university portfolio since its establishment of the university. Study programmes starting from academic Bachelor’s level to doctoral level study programmes are being implemented in this study direction.

The study programmes of the university have been gradually differentiated, resulting in the development of creative, technical and economic programmes as well. The study direction of “Information and Communication Science” with 2 study programmes has been developing since 2008, followed by the study direction of “Arts” with 3 study programmes, study direction of “Architecture and Construction” with 2 study programmes and study direction of “Economics” with 3 study programmes (see Figure 1.1).

RATIO OF RISEBA STUDENTS BY STUDY DIRECTION %

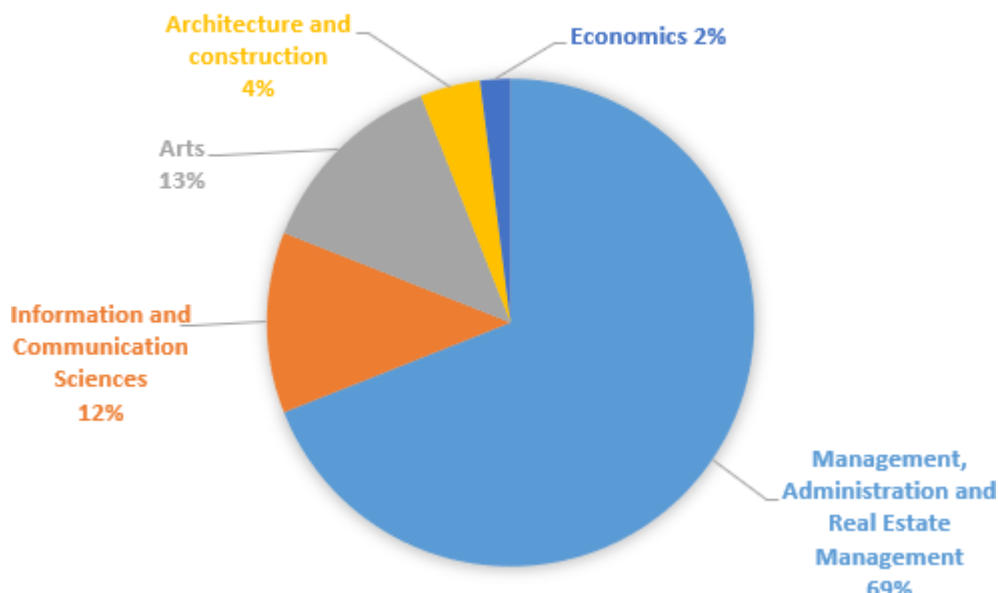


Figure 1.1. The proportion of the f-number of RISEBA students by study direction

Detailed information on study directions, study programmes included and the number of students has been summarised in **Annex**.

In 1999, a department of RISEBA University of Applied Sciences was opened at Mihoelsa iela 47, Daugavpils. It received the status of a subsidiary in 2002. During these years, approximately **2000 students** graduated from Daugavpils Subsidiary, several European Union projects have been implemented, as well as training for the unemployed was provided in cooperation with the State Employment Agency.

Due to the economic situation in the Latgale region, where the number of residents and, consequently - potential students, has been declining every year, which interferes with the creation of full, viable student groups, the management of the university decided to cease the admission of new student groups for studies in Daugavpils from the 2016/2017 academic year. In the future, Daugavpils Subsidiary will operate as a support centre of RISEBA for the structural units of Riga, while study programmes will no longer be implemented in Daugavpils.

The total dynamics of student numbers since 2014 can be characterised as stable, while the proportion between full time and part-time studies has been changing over the last years (see Figure 1.2). The number of part-time students has been observed to increase, while the number of full-time students has been declining. This, probably, can be explained by the increasing popularity of remote studies and the desire of students to work remotely at a time and place that is convenient for them. The total number of students on 1 October of the 2019/2020 academic year amounted to 2,626, which is a decrease of 13 students compared to the 2018/2019 academic year.

Due to the Covid-19 pandemic, a reduction in the number of full time, as well as part-time students has been observed. The total number of students on 1 October of the 2020/2021 academic year amounted to 2,444, which is a decrease of 182 students compared to the 2019/2020 academic year.

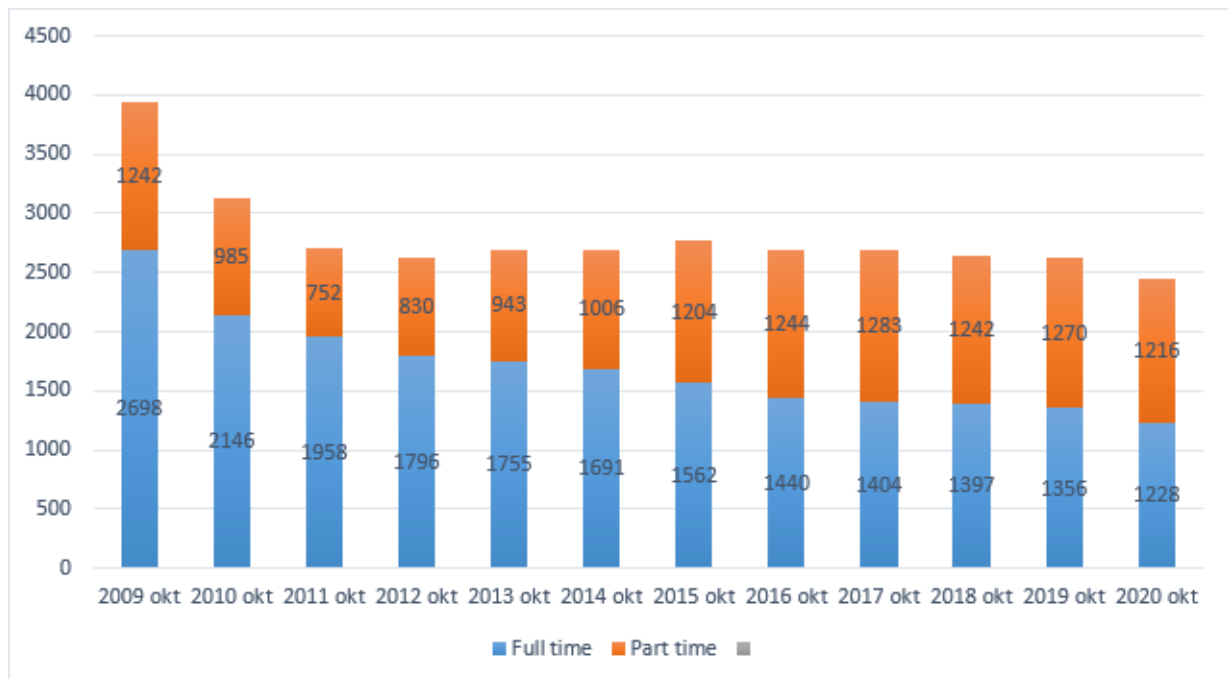


Figure 1.2. Dynamic change in the number of full time and part-time students (2009-2020, data collected on 1 October)

Changes in the global economic situation, the increasing role of creative sectors in the economy, as well as global trends in international education have promoted changes in the initial business model of RISEBA and require changes in the overall awareness and focus of the concept of the institution. [RISEBA Development Strategy](#) provides for actions that change RISEBA from a small and ambitious business school into a university, which, in addition to business and management programmes, provides students with an opportunity of studying communication science, audiovisual media science and architecture, thus transforming the university into a “place, where business meets art”. Since the objective of the university is to prepare competent professionals, who can operate in a variable, competitive international business environment, RISEBA strives to ensure the integration of study programmes into various sectors to reach high-level synergy between business and art. The integrative model (quantitative and analytical paradigm together with creativity and innovation) has promoted the use of a multidisciplinary approach in the education process. The aforementioned model ensures an interdisciplinary effect, promotes a student-centred holistic approach to the learning process, creativity, awareness of entrepreneurial culture, lifelong learning values, as well as social responsibility in a multicultural environment, which is based on trust, respect and responsibility. By using this successful innovative model platform, where the merger of both dimensions occurs in art-related activities, as well as in projects of different levels, RISEBA ensures the opportunities for development for students, as well as for lecturers, which enables them to learn innovative non-traditional approaches, as well as develops the ability to manage change, diversity and the ability to assume risks.

Strategic priorities:

1. Consolidation of the range of study programmes by contemporary trends and future challenges
2. Development of science
3. Internationalisation
4. Development of academic personnel
5. Development of relations with alumni
6. Development of lifelong learning

7. Technically developed, multidisciplinary teaching and study supportive environment
8. Strengthening of the university brand
9. Promotion of social responsibility

1.2. Description of the management structure of the higher education institution/ college, the main institutions involved in the decision-making process, their composition (percentage depending on the position, for instance, the academic staff, administrative staff members, students), and the powers of these institutions.

The governance structure of RISEBA has been created based on Adizes methodology, which provides for the involvement of administrative personnel of different levels in the development of the structure. The new **RISEBA structure** (see Annex 2) has been in effect since 24 April 2019.

RISEBA complies with the authority to perform functions of decision making bodies and collegial bodies provided for by the Law on Higher Education Institutions. RISEBA has 4 main RISEBA decision-making bodies (Constitutional assembly, Senate, Rector, Academic Arbitration Court) and several collegial decision making bodies, which involve students, academic and administrative personnel, employers and alumni (Student Council, Study Programme Councils, Ethics Committee, Appellation Committee, Methodological Council, Admissions Committee, Committee for the Recognition of Knowledge, Skills and Competencies Acquired Outside Formal Education or Professional Experience, or of Study Results Achieved in Previous Education, Committee for the Evaluation of the Compliance of Applicants with Academic Positions, RISEBA International Board of Advisors, Joint Council of Professors of RISEBA/BA/VeA in Management and Economics, Scientific Council, Promotion Council). The visualisation of mutual interactions of the aforementioned decision making bodies is indicated in **Figure 1.3**.

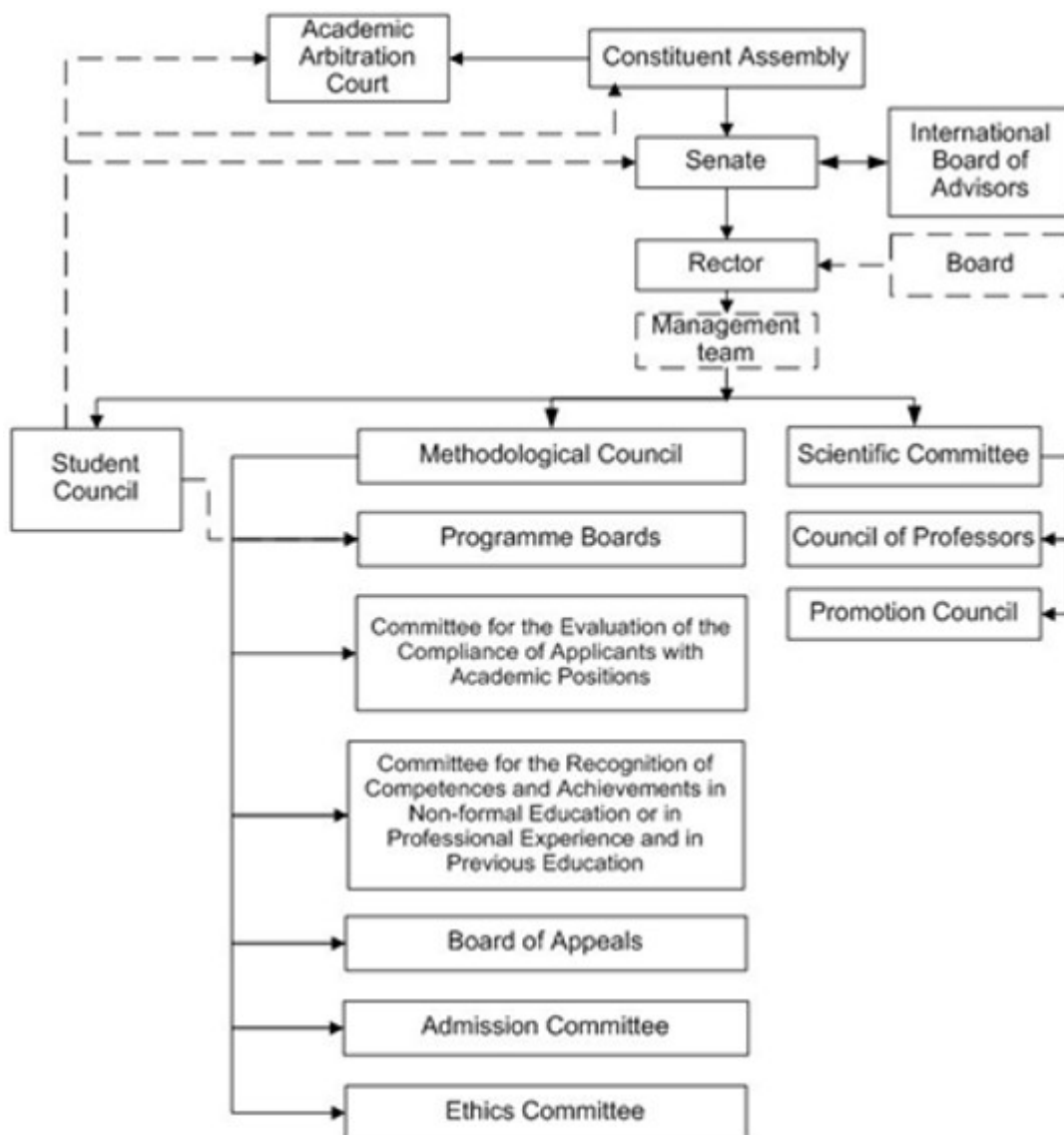


Figure 1.3. Interaction of RISEBA decision making bodies

The principal normative and regulatory enactments of RISEBA are enclosed in Annex 1.

Please refer to the table in the 13.v Annex for details on the percentage of decision-making bodies by affiliation and description of powers.

1.3. Description of the mechanism for the implementation of the quality policy and the procedures for the assurance of the quality of higher education. Description of the stakeholders involved in the development and improvement of the quality assurance system and their role in these processes.

Quality assurance and enhancement, in general, is one of the strategic priorities of RISEBA. The quality assurance system of the university has been designed based on the criteria of ENQA Standards and guidelines for quality assurance in the higher education environment of Europe (ESG 2015), the European Foundation for Quality Management Excellence Model (EFQM excellence model), as well as the EFMD (European Foundation for Management Development) study programme accreditation system (EPAS).

The objective of the RISEBA Quality Management System is to meet the requirements of quality criteria of the Republic of Latvia and the European Union, to ensure the monitoring of these criteria, and to introduce the process of continuous improvement to ensure that the services completely conform to the requirements of customers, lawmakers and supervisory institutions. A quality management system ensures the preparation of specialists required in the international labour market during the study process, ensuring that they are not only highly knowledgeable and skilled in their respective areas, but are also prepared for professional life in terms of values and attitudes.

Quality tasks defined by RISEBA:

- to prepare high-level specialists in accordance with the demands of the market and requirements of the regulatory enactments;
- to consolidate academic quality and freedom;
- to ensure competency-based education;
- to promote student-centred learning, teaching and evaluation;
- to promote the satisfaction of internal and external customers (students and employees); to promote the efficiency of university operation, its competitiveness and flexibility;
- to promote the scientific potential of the university;
- to enhance academic fairness;
- to upgrade the quality management of RISEBA;
- to improve the public image of the university and its international recognition.

The **quality policy** of RISEBA is based on the RISEBA strategy and values. Quality Management at RISEBA is implemented and improved according to the European Standards and guidelines for ensuring quality (ESG), and criteria of accreditation (EPAS) by the European Foundation for Management Development (EFMD). The institution of higher education strives for excellence by implementing the European Foundation for Quality Management (EFQM) model, and RISEBA, inter alia, uses principles of uninterrupted development – it defines the results to be achieved, identifies the measures to be taken and implements them, assesses performance and performs the required improvements (RADAR). RISEBA quality policy forms the RISEBA quality culture, where all the parties (students, academic staff, personnel and external involved parties) systematically implement measures for quality improvement, including in the areas of improvement of study programmes, the study process and research.

Students, lecturers, personnel and external stakeholders are actively involved in quality assurance, the upgrading of study programmes, the study process, and research. The quality policy has been distributed, explained and is binding on all personnel of the university. In their work, RISEBA personnel must observe the defined policy, as well as meet the requirements that are set for their duties. The policy has been published on the website of RISEBA and is easily accessible to personnel, customers and other stakeholders.

A detailed description of the RISEBA quality policy is available in the RISEBA Quality Management System Manual, available to the entire personnel. The Quality Management System defines and determines the structure of the organisation, duties and authority of employees, objectives and formulation of the quality policy and the area of operation thereof, as well as the structure and description of quality assurance processes of RISEBA basic activity and the structure and description of associated documentation. The processes described in the RISEBA quality management system manual include the processes of basic activity, management, as well as support or resource management, and defining quality indicators and criteria.

The implementation of the quality assurance system involves the following defined mechanisms:

- questionnaire survey of the parties involved, analysis of results, and performance of improvements;
- analysis of the references of employers (internship) and performance of improvements;
- annual evaluation of the activity of academic staff and administrative employees, development planning;
- class visitation;
- definition and improvement of the minimum requirements for the development of study courses;
- quality check and improvement of the websites of study courses;
- support the students and academic staff for the improvement of study quality;
- implementation of the methodical seminar for the academic staff;
- training for the administrative personnel;
- evaluation of the performance of students (results during studies, debts, marks of final works) and performance of improvements;
- monitoring of study discontinuation and preventive activities for the reduction of discontinuation;
- annual self-evaluation of the institution (annual report of studies);
- self-evaluation and planning and implementation of improvements through the use of EFQM, AACSB and EPAS principles
- annual self-evaluation of the study directions and development planning;
- self-evaluation of the study direction for accreditation and plan for the implementation of recommendations;
- development and implementation of the operational and development plan of the structural units, and strategies of the functional areas;
- medium-term strategy of the institution and definition and implementation of annual priorities;
- development and implementation of the procedures;
- review of quality mechanisms;
- elimination of problems and examination of proposals;
- acquiring best practices by participating in external quality assessments at other institutions.

1.4. Fill in the table on the compliance of the internal quality assurance system of the higher education institution/ college with the provisions of Section 5, Paragraph 2(1) of the Law on Higher Education Institutions by providing a justification for the given statement. In addition, it is also possible to refer to the respective chapter of the Self- Assessment Report, where the provided information serves as justification.

| | | |
|----|---|--|
| 1. | The higher education institution/ college has established a policy and procedures for assuring the quality of higher education. | RISEBA maintains a Quality Management System, which includes a quality policy and quality manual with defined processes, regulatory enactments and responsibilities. The Quality policy is published on the e.RISEBA website is easily accessible to all: https://e.riseba.lv/pluginfile.php/91973/mod_folder/content/0/Regulatory%20documents/Policies/PL0002-03_Q uality%20Policy.pdf?forcedownload=1 |
|----|---|--|

| | | |
|----|---|---|
| 2. | A mechanism for the creation and internal approval of the study programmes of the higher education institution/ college, as well as the supervision of their performance and periodic inspection thereof, has been developed. | The "Regulation for the Development, Amending and Closing of Study Programme", which establishes the procedure for the development and approval of the programme, as well as the "By-law for the Development of Self-assessment Report of a Study Direction", which determines how the annual assessment of study programme and study direction is performed, is in effect at RISEBA. |
|----|---|---|

| | | |
|----|---|---|
| 3. | The criteria, conditions, and procedures for the evaluation of students' results, which enable reassurance of the achievement of the intended learning outcomes, have been developed and made public. | The objectives, tasks and outcomes of the programme to be reached have been defined for each of the study programmes, which, in accordance with the methodology of mapping, are harmonised with the course study results and progress assessment criteria in the descriptions of study courses. The descriptions of study courses are published at e.riseba.lv (Moodle) with the respective study course and are accessible to students. |
| 4. | Internal procedures and mechanisms for assuring the qualifications of the academic staff and the work quality have been developed. | "Academic Personnel Policy" is in effect at RISEBA, which determines the internal procedures for the provision of qualifications and the quality of work of the academic personnel. In addition to this, the "Annual Procedure for Assessment of Academic Personnel", "Competence Model", as well as the condition that sets a requirement of mandatory attendance of methodological seminars for the purposes of improvement of qualification are in effect. |
| 5. | The higher education institution/ college ensures the collection and analysis of the information on the study achievements of the students, employment of the graduates, satisfaction of the students with the study programme, efficiency of the work of the academic staff, the study funds available, and the disbursements thereof, as well as the key performance indicators of the higher education institution/ college. | Surveys of students, alumni and employers are conducted by RISEBA in accordance with the "Procedure for the Conduct of Surveys". The employment of alumni is monitored based on annual reports provided by the Central |
| 6. | The higher education institution/ college shall ensure continuous improvement, development, and efficient performance of the study field whilst implementing their quality assurance systems. | "By-law on the development of self-assessment report of study direction" provides for the procedure of annual revision of study directions, which includes the presentation of main indicators, SWOT analysis and development plans to the management group to ensure continuous development of the study direction. |

2.1. Management of the Study Field

2.1.1. Aims of the study field and their compliance with the scope of activities of the higher education institution/ college, the strategic development fields, as well as the development needs of the society and the national economy. The assessment of the interrelation of the study field and the study programmes included in it.

“The Academic Bachelor’s Study Programme “Architecture” and the Professional Master’s Study Programme “Architecture” of the “Architecture and Construction” study direction logically incorporates within the overall strategic objective of RISEBA University of Applied Sciences - to become an internationally recognised university of business, arts and technologies. For the successful implementation of the university strategy, in accordance with the common European higher education system establishment and reformation procedure (within the framework of the objectives of the Bologna process), the following strategic development priorities have been defined:

- Consolidation of the range of study programmes in accordance with contemporary trends and future challenges;
- Development of science;
- Internationalisation;
- Development of academic personnel;
- Development of relations with alumni;
- Development of lifelong education;
- Technically developed, multidisciplinary teaching and study-supportive environment;
- Strengthening of the university brand;
- Promotion of social responsibility.

These priorities have been set in accordance with the mission, vision and values defined by the university (see [here](#)). In accordance with the strategy of RISEBA and priorities thereof, the particular strategic objectives and tasks, as well as a timeline for the implementation thereof, responsible employees, methodology for the measurements of task performance and criteria have been defined for the university.

Under the influence of the global economic crisis, the domestic demand for architectural services had significantly declined in Latvia in the time period from 2010 to 2012. The number of architects at architectural bureaus has consequently declined (a drop of 23%), however, starting from 2013, the demand for architectural services in the country has been increasing. The sector of architecture is a part of the national creative industries sector of Latvia. The overall turnover of the sector averages at one billion euros per year. In terms of turnover, the largest sectors of the creative industry in Latvia are the operation of advertising agencies, computer programming, manufacturing of furniture and architectural services; the sum total of the aforementioned sectors amount to approximately 64% of the total annual turnover of creative industries.

Until 2011, Latvia was the only country in the region with only one architectural school. For reference – currently, there are three architectural schools in Estonia and four in Lithuania. It is important to emphasise that the architectural school of RISEBA University of Applied Sciences is the only private school of architecture in the Baltic region, where studies of architecture are financed

from the funds of natural persons.

One of the development points of the study direction provided for the drafting and submission of the licensing application of the Master's study programme to the authorised institution (Academic Information Centre - AIC) in 2016, thus ensuring the development and upgrading of the study direction. By decision No. 32-L of the Study Programme Licensing Committee of AIC, adopted on 14 December 2016, the licence was granted for the commencement of implementation of a 2-year and 80 credit Professional Master's Study Programme "Architecture" in February 2017.

The objective of the study direction "Architecture and Construction" for the following years is to ensure a comprehensive, innovative, high-quality architectural education at Bachelor's and Master's levels with the opportunity of obtaining a professional qualification of an architect that is compliant with the norms of the European Union. The task of the study direction "Architecture and Construction" is to prepare the students for independent practice as architects or for further studies of architecture.

Over this reporting period, a professional Master's study programme was added to the academic Bachelor's study programme within this study direction - the commencement of studies was scheduled for the spring semester of 2017.

Development and implementation of the study direction "Architecture and Construction" comply with the objectives set for the implementation of the strategic plan of RISEBA of becoming recognised and demanded school of architecture in the Baltic Region.

The introduction and implementation of the study direction "Architecture and Construction" at RISEBA University of Applied Sciences are performed in accordance with the Sustainable Development Strategy of Latvia until 2030 "Latvija 2030", National Development Plan of Latvia for 2014–2020, Ministry of Culture policy document - Cultural Policy Guidelines 2014-2020 "Creative Latvia" and the development strategy of the architectural sector included in the document.

The language of instruction of the study direction and architectural study programmes at RISEBA University of Applied Sciences is English, the programmes are implemented under the lead of internationally recognised lecturers, thus providing the competitiveness of the students in the labour market and enabling the successful development of entrepreneurship in Latvia and abroad.

2.1.2. SWOT analysis of the study field with regard to the set aims by providing explanations on how the higher education institution/ college expects to eliminate/ improve weaknesses, prevent threats, and avail themselves of the given opportunities, etc. The assessment of the plan for the development of the study field for the next six years and the procedure of the elaboration thereof. In case there is no development plan elaborated or the aims/ objectives are set for a shorter period of time, information on the elaboration of the plan for the development of the study field for the next assessment period shall be provided.

The diagnostics of the study direction are performed in two

- sections: internal diagnostics of the study direction and
- external diagnostics of the study direction.

The internal diagnostics of the study direction show that the **principal strengths** of the study direction include the international experience of the administrative and academic personnel involved in the implementation of the study direction, their qualifications and extensive network of co-operation partners. **The weaknesses** are mainly related to the shortage of highly qualified domestic lecturers with doctoral degrees in architecture and an urgent need to develop specialised library resources and spatial and technological support of the study environment - significant improvements have been made in exactly this area one year before the reporting period – the direct investment of RISEBA amounted to EUR 54,500.

The external diagnostics of the study direction show that the strengths are related to a unique study and research environment – The geopolitical situation of Latvia and Riga, the location of the Architectural programme in H₂O 6 block - one of the creative blocks of Riga, as well as the direct link of Architectural programmes with Audiovisual and media art programme and other programmes offered by RISEBA, which ensure the link with the business environment. The opportunity of obtaining education in English under the leadership of internationally recognised lecturers is a certain advantage as well.

Comparatively high costs of studies on the programme and the convenience of student loan availability, as well as state subsidies to competing study programmes implemented by state higher educational institutions must be considered to be a **weakness** (in terms of competitive aspects of student attraction).

Internal diagnostics of the study direction

Table 1.4.

| Criteria | Strengths | Weaknesses | Addressing vulnerabilities |
|--------------------------------|--|---|---|
| Experience in the market | Experience has been accumulated during the organisation of studies since 2011 Studies are conducted in English. | Shortage of highly qualified domestic lecturers with good command of English. | We actively invite guest lecturers with excellent English language skills and international experience. We try to provide one foreign lecturer in each architecture and design course. |
| Content of the study direction | Clearly defined objectives, tasks and expected outcomes of the study direction and individual programmes. Logical sequence and modular system of the study courses. | The content could be subordinated to abilities (availability of lecturers, etc.). | The faculty is not large, so the ability to quickly adapt to changes in the content of the study program is more positive. |

| | | | |
|-----------------------|---|---|--|
| Teaching staff | <p>A high proportion of foreign guest lecturers. Highly qualified academic personnel high proportion of lecturers with doctoral degrees are involved in the implementation of the programme.</p> <p>High artistic creativity, scientific and research activity of the academic personnel. A stable team of lecturing personnel is being developed.</p> | <p>Shortage of highly qualified domestic lecturers with doctoral degrees in architecture. The a general shortage of lecturers in the area of architecture and construction (a high proportion of architects employed at their practices).</p> | <p>During the reporting period, some lecturers have started doctoral studies or intend to do so shortly (for example, H. Gūtmane, V. Celmiņš, R. D. Šmits, etc.)</p> |
| Study methods/process | <p>Transfer of good practices from Europe higher educational institutions and synthesis of new methods.</p> <p>During their studies, students develop different projects and independent works related to real work environments and customers.</p> <p>Modern interactive study methods and work in the design workshop are used.</p> <p>Presentations of individual and group projects are organised regularly.</p> <p>Study materials and tools required for the implementation of the programme has been prepared.</p> <p>The learning process is constantly being upgraded.</p> | <p>The development of new training methods requires additional human resources, time and financial investment.</p> | <p>From 2019 to 2021, due to the situation in Covid-19, both lecturers and students had to adapt to a new situation, quickly learn new technical possibilities to continue their studies remotely or partially remotely and not lose the existing quality. Due to the former restrictions, hybrid lectures were given (partly remotely, partly in person).</p> |

| | | | |
|--|---|--|---|
| Study materials, technical support | <p>Good IT base for the provision of the learning process (including databases). Expansion of library resources is possible. Good study base and infrastructure. Good provision with multimedia technologies.</p> | <p>The amount of resources in the library of historical books is comparatively limited, but a unique collection of new books is being developed.</p> | <p>The library's collections are replenished every year with the purchase of new books, and book donations are also received.</p> |
| Students | <p>High appraisal of the programme by the students. A stable number of students.</p> | <p>A low number of foreign students.</p> | <p>During the reporting period, the number of students has increased every year. See Appendix No. 17. Statistical data on foreign students.</p> |
| Co-operation | <p>Co-operation with employers and professional associations has been established. Co-operation with municipalities.</p> | <p>Development and maintenance of co-operation require regular work.</p> | <p>Many students are already employed by guest lecturers during their studies or after graduation, for example, DJA Architects, Arhis Arhitekti, Alsijš Architecture, UPB, Laaga architects, Sarma & Norde, Mailitis Architects, etc.</p> |
| Content of the study direction and programme | <p>Competitive tuition fees for the citizens of Latvia and the European Union, as well as permanent residents, is determined at a 20% discount from the standard price of EUR 4,200/EUR 6,000. One state budget funded place is available for students for excellent achievements. Various discounts on the tuition fee are available, including, among others, for sports achievements and diligence in studies, as well as social support grants.</p> | <p>Relatively high tuition fee. Only one budget funded place is provided in each study direction.</p> | <p>The university is private and does not receive state grants. To reduce tuition fees or increase the number of budget places, it is necessary to attract patrons.</p> |

| | | | |
|--------------------------|---|--|---|
| Language of instruction | English | Shortage of highly qualified domestic lecturers, who could lecture in English. | Most study courses are currently taught by foreign guest lecturers or lecturers with international experience who are native or fluent in English. |
| Administrative personnel | Highly qualified administrative personnel for the programme | Insufficient administrative capacity. | During the reporting period, the administrative staff of the faculty has increased by 3 positions: head of the scientific group, project manager and assistant. |

Diagnostics of external conditions of the study direction

Table 1.5.

| Criteria | Strengths | Weaknesses | Addressing vulnerabilities |
|-------------------------------|---|--|--|
| Intensity of competition | To continue the development of the programme, considering the changes in the labour market of Latvia and the principal global development trends. | Offer of similar study programmes at other higher education institutions, including the high numbers of budget funded places, affect the number of students, severe competition. | The number of first-year students is growing every year and in 2021 reached a maximum capacity of 26 students. |
| Purchasing capacity inflation | Study loans | Limited financial resources are available to prospective students. | The university offers students various types of tuition discounts and grants, as well as cooperation with banks to obtain financing. |
| Demographic situation | Provision of study courses. Studies in English for potential students. A stable number of students. | Deterioration. Reduction of the number of students as a result of demographic trends. | During the reporting period, the Faculty of Architecture did not feel the impact of the demographic situation on the dynamics of the number of students. |

| | | | |
|---------------------------------|---|---|--|
| Economic situation | The situation tends to improve. | The unstable economic situation in the country may affect the sector of architecture and building. | The last two years have seen a decline in the architecture and construction industry, but the number of students continues to grow. |
| Academic personnel | Attraction of foreign guest lecturers. Promotion of the qualifications and professional skills of academic personnel. | Shortage of highly qualified lecturers with doctoral degrees in architecture in the country. A problem in the attraction of lecturers is observed, the professionals are predominantly employed at private practices, they believe the remuneration to be insufficient. | In 2021, the salaries of lecturers were reviewed due to the general economic situation and the attraction of qualified specialists to study programs. |
| Government policies/legislation | Harmonised legislative basis. | Insufficiently harmonised government policies and legislative environment in the areas of higher education, architecture and construction. | Representatives of the Faculty of Architecture served on the National Council of Architecture on architectural strategy and architectural standards to apply to existing professional and market requirements. |

Please enclose the development plan of the study direction as an Appendix 3(if applicable).

2.1.3. The structure of the management of the study field and the relevant study programmes, and the analysis and assessment of the efficiency thereof, including the assessment of the role of the head of the study field and the heads of the study programmes, their responsibilities, and the cooperation with other heads of the study programmes, as well as the assessment of the support by the administrative and technical staff of the higher education institution/ college provided within the study field.

The organisation of the programmes included in the study direction for students, as well as academic personnel, is governed by RISEBA study regulations and the rules of procedure.

The principal study regulations and procedures that govern the organisation of studies, learning process and creative and research work of the students, as well as other activities, are available at e.riseba.lv.

The study direction "Architecture and Construction" and the development of study programmes are supervised and developed by the Department of Architecture and Design of RISEBA, the Study Programme Council of RISEBA and programme directors. A curator is appointed for each group of students, as well as the group leader. Their task is to provide support in the resolution of different problem situations.

Operational organisational and planning work is ensured by the programme administrators of the university and the Study Department.

The structural chart of study programme governance is enclosed in Appendix 4.

The quality of the study process is ensured by internal quality management measures, whereby specific requirements are set for academic personnel, as well as the results of student work.

The programme director regularly organises meetings of student groups, as well as meetings with student group leaders to listen to their opinions on the topical problems that arise during the academic year. The areas of responsibility of RISEBA decision making bodies and structural units are reflected in Table 1.6.

Study direction "Architecture and Construction" and the development of Study Programmes are supervised and upgraded by the decision making bodies indicated in Table 1.6.

Table 1.6.

Structural units involved in the study programme and tasks thereof

| The structural unit of RISEBA/responsible person | Task |
|---|-------------|
|---|-------------|

| | |
|----------------------------|---|
| Senate of RISEBA | Approves documents that govern the areas of academic and scientific operations of RISEBA |
| Department of Architecture | Initiates the development of new study programmes within the framework of the study direction, develops new programmes and upgrades the existing programmes, performs market research of new programmes, ensures the quality of education |
| Programme director | Organisation and development of the daily operation of the study programme, quality assurance of the study process, management of programme licensing and accreditation processes |
| Programme Council | Implementation of supervision of the strategic planning and implementation of the study programme (the decisions of the council are of an advisory nature) |
| Professor Groups | Initiate and involve the students in the conduct of scientific work, for instance - participation in Student Conference |

| | |
|-------------------------------|---|
| Career Development Centre | In co-operation with the respective department, performs marketresearch for new programmes, initiates the organisation of various events within the study directions/programmes, involves students in various activities |
| External Relations Department | Promotes co-operation with other educational establishments in Latvia and abroad (with involvement of students and lecturers), involvement of foreign lecturers in the programme and study process, organisation of student exchange |
| Study Department | Organises the process of studies, involvement of foreign lecturers in the learning process |
| Project Department | Informs academic and administrative personnel of RISEBA and students on project options, promotes the conduct of scientific research by using the support options offered by the European Union and the national government and promotes the acquisition of practical project management skills by students |
| Creative Business Incubator | Promotes and supports RISEBA students in the development of business ideas, development of projects and commencement of the entrepreneurial activity. The organisation of guest lectures and experience exchange events |
| Student Council | The Student Council ensures the implementation of the principles of democracy in the governance of RISEBA. The Student Council provides a bridging function between students and the administration of the university. The Student Council of RISEBA consists of the students of the university, who organise the activities of the university and student life. Represents the interests of students at the Programme Councils |

2.1.4. Description and assessment of the requirements and the system for the admission of students by specifying, inter alia, the regulatory framework of the admission procedures and requirements. The assessment of options for the students to have their study period, professional experience, and the previously acquired formal and non-formal education recognised within the study field by providing specific examples of the application of these procedures.

A system and the procedures for the admission of students, for the recognition of the study period, professional experience, previously obtained formal and informal education and the assessment of student achievements and study results have been developed at RISEBA.

The admission procedures and requirements are governed by [Admission Requirements](#), which are approved at the RISEBA Senate Session every year. The Admission Requirements have been developed in accordance with Section 46 of the Law on Higher Education Institutions, Cabinet Regulation No. 846, Adopted on 10 October 2006 *Regulations Regarding the Requirements, Criteria*

and Procedures for Admission to Study Programmes and the Study Regulations of RISEBA University of Applied Sciences.

The admission requirements provided for in the RISEBA University Admission Regulations and the corresponding selection of applicants comply with the procedures provided for by the regulatory enactments and are appropriate and sufficient for each matriculated student to be able to achieve the intended results of the study programme.

In order to study at RISEBA University, a document recognised and documented in Latvia regarding completed secondary or higher education, or regarding studies at another university is required as well as the Admission Requirements must be met. Citizens of Latvia and citizens of other countries are equally entitled to study and receive the services of RISEBA University of Applied Sciences in the Republic of Latvia.

Application for the programme is performed by using an e-service "United Electronic Application System for basic study programmes" (VUPP) in the portal www.latvija.lv/studijas. Applications for the basic study programmes beyond the VUPP competition are submitted by filling out an electronic application on the internal information system of RISEBA University of Applied Sciences my.riseba.lv (RIS).

The system is compatible with the Horizon system used by RISEBA, which enables the administration of the university to track the number of admitted and dismissed students during the admission period, as well as during the study period.

Discounts are available in the full-time study form every year – one study place provides a discount on the tuition fee in the amount of 100% (In the Bachelor's programme of the study direction of Architecture and Construction, the average mark of the student in the profiling subjects (English Language, Latvian Language and Literature (except for the students, who have received their education abroad), informatics, mathematics (or average mark from the evaluation in algebra + geometry), physics or chemistry or natural sciences) is taken into consideration. The result of the competition is calculated according to the formula: $\text{Evaluation} = (\text{Centralised exam mark (CE) Latvian Language} \times 0.2 + \text{CE English Language} \times 0.4 + \text{CE Mathematics} \times 0.4) / 10$

The discount on the tuition fee is revised every semester by rotation procedures, as well as 15 types of discounts on the tuition fees are available to promote the involvement of students in the study programme.

The procedure for recognition of the period of studies, professional experience, previously acquired formal and informal education at RISEBA is governed by the "Rules for the Recognition of Study Results Achieved during Previous Education or Professional Experience".

A person, who intends to have the study results obtained during previous education or professional experience recognised, shall apply for the recognition of the obtained study results to the RISEBA Programme Director together with justifying documents. The decision on the recognition of results shall be adopted by the commission developed by RISEBA, which is acting based on the regulatory enactments of the Republic of Latvia and EU recommendations.

The regulation "Preparation of Study Course Comparison Protocol and Individual Study Plan" provides for the comparison of the study courses of study programmes previously mastered by the applicant or the student with the study courses of the target study programme.

Recognition of previously acquired study courses or education is provided in the following cases:

1. If a person is reinstated for studies at RISEBA University of Applied Sciences after

exmatriculation (dismissal): If the student is reinstated for studies after leaving from studies;

2. If a student changes the selected study programme, qualification, study form, language of instruction at RISEBA University of Applied Sciences;
3. If the student returns from ERASMUS+ or Double degree programmes;
4. If a person transfers from another educational establishment or commences studies after obtaining higher education. A co-operation agreement with Alberta College and Latvia Culture College on the admission of students in the 2nd year of the Bachelor's study programme "Public Relations and Advertising Management" after graduation from the respective programmes (public relations or advertising) of the aforementioned colleges;
5. Students, who have acquired the study courses of the study programme at another higher education institution.

The previously acquired study courses are compared with the target study programme in terms of content, as well as scope (number of granted credits). The study courses are recognised, if the scope of credits in the comparable study programmes is similar or, if the number of credits in the previously mastered subject has been higher.

Example:

Students from RTU or students, who have graduated RCK (have mastered first level higher education) tend to transfer to the Bachelor's study programme at RISEBA. In this case, a comparison of study courses needs to be performed to determine which year the respective student should be admitted.

- if a student transfers to RISEBA from another higher education institution or starts studies after obtaining another higher education, as well as students from ERASMUS + exchange programs;

Students from Riga Construction College, VIA University College (Denmark) often come to the RISEBA bachelor's study program "Architecture". Students also tend to come from Riga Technical University.

The "Rules for recognition of competences acquired outside formal education or professional experience and of study results achieved in previous education" determine the procedure for the recognition of the knowledge, skills and competencies obtained outside formal education or in professional experience or study results achieved during previous studies and criteria, as well as defines the conditions for the creation of the commission, its rights and duties.

The recognition of competences acquired in professional experience is most commonly applied to the students in Master's study programmes:

1. People with previous non-profile education or academic education may have their knowledge, skills and competencies obtained in professional experience recognised, if the results are obtained in the area of their professional activity that conforms to the thematic area of the study programme and the practice provided for by the programme are considered to be passed;
2. People with previous non-profile education may have their knowledge, skills and competencies obtained in professional experience recognised, if the results are obtained in the area of their professional activity that conforms to the thematic area of the study programme and the study courses provided for by the introductory module may be considered to be passed.

For an electronic link to the internal normative regulation "Admission Requirements", which

determines the procedures for the admission of students, click [here](#).

For an electronic link to the internal normative regulation "Rules for the Recognition of Study Results Achieved during Previous Education or Professional Experience", which governs recognition procedures, click [here](#).

2.1.5. Assessment of the methods and procedures for the evaluation of students' achievements, as well as the principles of their selection and the analysis of the compliance of the evaluation methods and procedures with the aims of the study programmes and the needs of the students.

The implementation of study achievements and study results is performed **based on the principles of student-centred education, by the Law on Higher Education Institutions and Internal Procedures of RISEBA University of Applied Sciences**. In the study process, variable methods for the evaluation of learning and study achievements that meet the needs of the students are ensured. Student achievements and study results are evaluated during practical sessions, seminars, tests, independent study work, discussions, master classes, skill development exercises, excursions and other types of tests, as well as during different public activities of the university. The studies are based on the independence of the students while ensuring the lead and support of the lecturer - the description of each study course indicates the amount and content of student independent work, as well as the evaluation methods. E-RISEBA environment is used to publish the evaluation requirements, criteria and methods of each study course that govern the determining of the marks, as well as the explanation of evaluations. The students receive explanations of their evaluation and, if required, advice regarding the improvements in their work. The evaluation of practice and Master's theses are performed by several examiners; the evaluation is carried out by using approved procedures, and it is fairly applied to all students and consistent.

All study courses provided in the study programme are implemented by the study course descriptions, in which the evaluation system of the course concerned is also determined subject to the unified evaluation system of RISEBA. The assessment system used at RISEBA has been developed based on Cabinet Regulation No. 512, Adopted on 26 August 2014 *Regulations Regarding the State Standard of Second Level Professional Higher Education*":

- The principle of the transparency of evaluation – by the set objectives and tasks of the programme, as well as the objectives and tasks of study courses is a defined set of requirements for the assessment of reaching the study results. The set of requirements has been indicated in the description of each study course.
- Mandatory nature of evaluation - the need to receive a positive assessment for each study course, and, respectively, on the mastery of the entire content of the programme. The student may only defend their Master's thesis after having mastered the entire content of the programme.
- The principle of the possibility to review the evaluation - the higher educational establishment determines the procedure for reviewing the obtained evaluation. Section 3.6 of the RISEBA Study Regulation, which has been approved by the Senate, provides - if a student intends to improve their final mark, they shall agree with the respective lecturer and the Programme Director on the time and receive the referral of a defined form from the respective study programme administrator by the price list of additional paid services.
- The principle of diversity of test methods used for evaluation - different methods of

evaluation are used to evaluate the acquisition of the programme.

Every lecturer shall regularly check the knowledge, skills and competencies of students by using the testing methods indicated in the course programmes and course description. The requirements of tests depend on the specific nature of each study course and the organisation of the study process within the course. Exams at RISEBA are organised in written, as well as oral form. The final evaluation after the acquisition of the study course includes the evaluation of students' work during the entire period of course acquisition, including participation and quality of work during sessions, results of tests and independent works, as well as the evaluation of the examination. **Study results shall be evaluated not only by the respective lecturer or commission - the self- assessment of student learning results and mutual assessment of students are also used.** The course paper, applied research and the content and quality of practice report, as well as presentation skills of the student, are evaluated by a commission.

Upon the commencement of each new course, the respective lecturer shall inform the students of the evaluation requirements by using the evaluation system established by RISEBA University of Applied Sciences.

The acquisition of the course shall be deemed successful, if the requirements provided for by the programme have been met by the end of the examination period, except for the cases, where an extension of the testing period has been granted. The methods for the evaluation of RISEBA studies and mastered knowledge, skills and competencies are objective and are consistently observed.

The scope and content of each test of study results **shall comply with the mapping results of each study programme**, considering the content of the respective study course, requirements for the knowledge, skills and competencies determined in the professional standard by the levels of European Qualifications Framework (EQF) and Latvian Qualifications Framework (LQF).

The results of the studies shall be evaluated based on two parameters:

- Qualitative evaluation as a percentage and final mark in a 10-point system (see Table)
- Quantitative evaluation - number of credits by the scope and importance of the study course.

The quality of student knowledge, skills and competencies - the results of examinations, tests, course papers and other evaluations shall be evaluated as a percentage by the criteria approved by the Scientific Council and the final evaluation shall be expressed as a mark in a 10-point system, based on the requirements of the Ministry of Education and Science of the Republic of Latvia.

Table 1.7.

| Acquisition level | Evaluation % | Mark | Explanation | Approximate ECTS mark | Assessment criteria: knowledge, skills and competences |
|-------------------|--------------|------|-------------------------------|-----------------------|---|
| very high | 96-100 | 10 | Izcili With distinction | A | Exceeds the requirements of the study programme, bears evidence of independent research and a deep understanding of the problems. |
| | 90-95 | 9 | Teicami Excellent | A | The requirements of the study programme have been mastered in full, an ability to independently use the mastered knowledge has been obtained. |
| high | 80-89 | 8 | Łoti labi Very Good | B | The requirements of the study programme have been mastered in full, however, deeper awareness, as well as the ability to independently apply the mastered knowledge in a more complex setting is sometimes lacking. |
| | 70-79 | 7 | Labi Good | C | The requirements of the study programme have been mastered, however, individual minor drawbacks in the acquisition of the knowledge can be detected. |

| Acquisition level | Evaluation % | Mark | Explanation | Approximate ECTS mark | Assessment criteria: knowledge, skills and competences |
|-------------------|--------------|------|--|-----------------------|--|
| medium | 60-69 | 6 | Gandrīz labi Almost Good | D | The requirements of the study programme have been mastered, but at the same time, and insufficiently deep understanding of certain more complex problems can be observed. |
| | 50-59 | 5 | Viduvēji Satisfactory | E | The requirements of the study programme have been mastered, although an insufficiently deep awareness of several important problems can be observed. |
| | 40-49 | 4 | Gandrīz viduvēji Almost Satisfactory | E/FX | The requirements of the study programme have been mastered, an insufficient understanding of several important problems and difficulty in practically applying the mastered knowledge can be observed. |

| Acquisition level | Evaluation % | Mark | Explanation | Approximate ECTS mark | Assessment criteria: knowledge, skills and competences |
|-------------------|--------------|------|-----------------------------------|-----------------------|--|
| low | 26-39 | 3 | Vāji Bad | Fail | Superficial knowledge of the most important problems of the study course has been mastered, however, the student does not possess the ability to put the knowledge to practical use. |
| | 10-25 | 2 | Ļoti vāji Very bad | Fail | Superficial knowledge of the most important problems of the study course has been mastered, however, the student completely lacks orientation in other important problems. |
| | 1-9 | 1 | Ļoti, ļoti vāji Very, very bad | Fail | The student lacks awareness of the basic problems of the study course. |

The sum of obtained credits is indicated on the card the student. To evaluate the conformity of the work performed by the students to the plan, the quantitative evaluation of the plan in credits is performed every semester and every academic year - 1 credit point conforms to 40 hours.

The achievements of the students are also evaluated outside learning activities, during participation in the public events of RISEBA University of Applied Sciences and scientific student conferences. For the achievements in this area, the students will receive an oral commendation, cash prizes granted by co-operation partners, as well as nominations "Student of the Year", "Event of the Year", etc., during the annual close of the year event "Golden Prize" organised by the university.

To improve the quality of studies and evaluate the progress, development, personal growth of study knowledge, as well as to mark the most diligent students, the learning achievements of the students of the Faculty of Architecture and Design are evaluated according to two nominations:

- RISEBA ADF "Personal Growth Award" (RISEBA FAD "Award of Personal Growth" is presented for the student's personal growth and achievements in the study courses Design Basics I, II and Architecture Design I, II, III, IV;

- RISEBA ADF Academic Excellence Award (RISEBA FAD "Award of Academic Excellence") for outstanding achievements in academic, scientific and organizational work.

The awards are given in accordance with the ["Regulations on RISEBA awards in the bachelor study](#)

2.1.6. Description and assessment of the academic integrity principles, the mechanisms for compliance with these principles, and the way in which the stakeholders are informed. Specify the plagiarism detection tools used by providing examples of the use of these tools and mechanisms.

Compliance with academic fairness principles is governed by the Academic Fairness Code, Plagiarism Regulation and the Code of Ethics developed by RISEBA (see an electronic link to the documents).

The academic fairness policy means a commitment to observe the values of fairness, ethics and justice, which will promote the reaching of academic, personal and professional success by lecturers and students. Academic fairness is an integral component of the actions of lecturers and students of the University in the academic environment and a link between the academic environment and long-term professional and academic career. The main **objective** of academic fairness is to promote fair academic culture at the University, instead of detecting academic violations of lecturers and students and punishment for these violations.

Compliance with the code of academic fairness must be promoted by the entire team of the University, including all lecturers, guest lecturers and faculty personnel, study programme administrators, deans and the management of the university.

RISEBA University of Applied Sciences sets the following principles of academic fairness as the main conditions of the Academic Fairness Code:

- Objectivity;
- Fairness;
- Liability;
- Scientific nature;
- Transparency, mutual respect and trust.

Plagiarism Regulation determines the procedures for the identification of plagiarism in the written works of the students and lecturers of RISEBA, as well as sanctions applicable in the event of plagiarism. Since 2013, RISEBA is a participant in the common computerised plagiarism control system, where every member of academic personnel, with the help of the IT Department, may check the written works of the students at 14 higher education establishments in Latvia during the entire academic year. Furthermore, all final papers of RISEBA students are checked for plagiarism before the defence of these papers, when the students must submit the final paper to the IT Department in electronic form.

The Code of Ethics of RISEBA is based on the concept of Academic Fairness and the Code of Ethics for Scientists adopted in Latvia. The objective of the Code of Ethics of RISEBA students, lecturers and employees is to stimulate a fair and just environment at the university by creating a beneficial and responsible RISEBA family, which is based on the values of RISEBA.

2.2. Efficiency of the Internal Quality Assurance System

2.2.1. Assessment of the efficiency of the internal quality assurance system within the study field by specifying the measures undertaken to achieve the aims and outcomes of the study programmes and to ensure continuous improvement, development, and efficient performance of the study field and the relevant study programmes.

The goal of the RISEBA Quality Assurance system is to ensure that internal communication takes place in an organized manner, powers, responsibilities and actions of employees are clearly defined, including in case of problems or concerns expressed by students, that the quality of students' services is improved and that specific goals and objectives of RISEBA are achieved to increase the general quality of studies and ensure their continuity. An efficient quality assurance system allows the university to find problems and their cause in the study processes, as well as to take corrective action.

Along with clearly defined RISEBA quality assurance principles outlined in the [RISEBA quality policy](#) and Quality handbook, the internal quality of the academic direction is also achieved using the below quality assurance system (see Figure 2.1).

The academic direction and its study programmes are managed using the following processes:

- Programme management and content
- Programme implementation
- Programme results

The Programme Director who is subordinated to the Head of the Department and the Dean of the faculty is responsible for the quality of the programme, its management and implementation by achieving the expected results and ensuring top quality using the predefined tools listed in Figure 2.1 and described below.

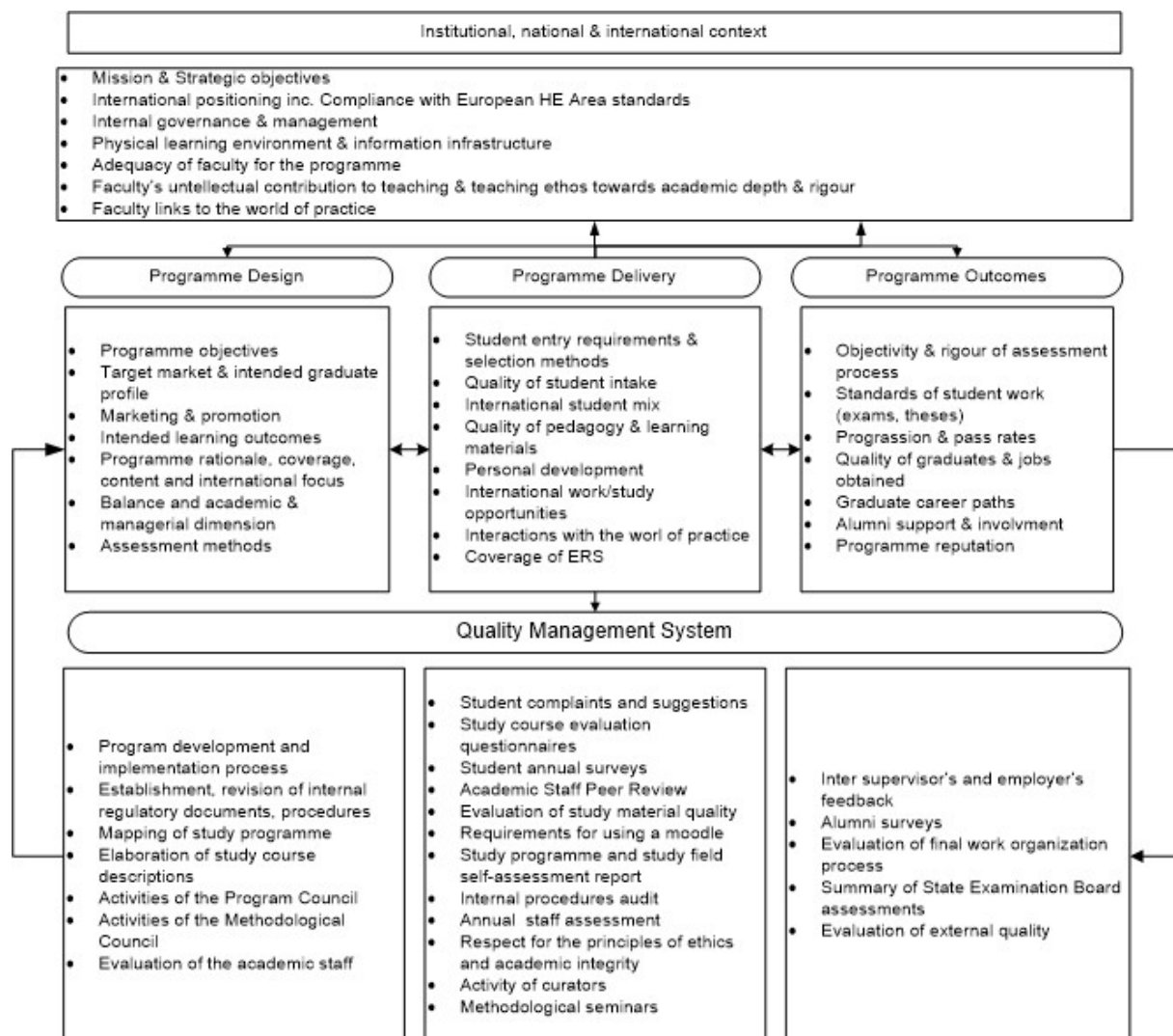


Figure 2.1. The quality management system of the academic direction

The following indicators are considered the key performance criteria:

Programme management and content

- **Development and implementation of the programme**

For new study programmes to fit into the general strategy of the university, a unified procedure regulating the development and changes in the programme is applied. RISEBA has "[Regulations on developing, amending and terminating study programmes](#)". The processes of a study programme should comply with the "[Study Regulations](#)".

- **Drafting and review of internal regulatory documents and procedures**

To establish a unified procedure for drafting, approving and distributing regulatory documents of the university, it has an approved "[Document management procedure](#)" that allows the entire personnel to handle all documents according to a clear and understandable procedure.

- **Mapping the study programme**

The university has determined that each study programme should be mapped showing how its goals and academic results comply with the occupational standard and the EQF/NQF levels. "[Methodological guidance for mapping of study programmes](#)" is an auxiliary material for

programme directors to ensure successful mapping.

- **Drafting course descriptions**

Together with the head of the respective department, the Programme Director is responsible for the quality of the content of each study course, and the implementation and development of a study programme. Each study course of a study programme should have a course description approved by the Programme Director and the head of the Department. The member of the academic staff that delivers a specific study course should prepare its description aligning the content and assessment criteria of the course with the goals and expected academic results of a study programme and receive approval from the Programme Director and the head of the department. According to the ["Updating process for course description"](#), the course descriptions should be kept and made available in the Moodle system. The academic staff should inform students about the course description, expected academic results and assessment criteria during the first class.

- **Study Programme Council**

To ensure the quality and monitoring of all study programmes, meetings of Study Programme Councils take place on regular basis (see Figure 2.2) during which programme directors, academic staff, students, graduates and employers evaluate respective programmes. Opinions of all stakeholders are taken into account to facilitate the development of study programmes according to the requirements of sectoral experts and labour markets, and opinions of students and experiences of alumni while starting or continuing their professional development. ["Regulation of the Study Programme Council"](#) regulates how the respective councils operate.

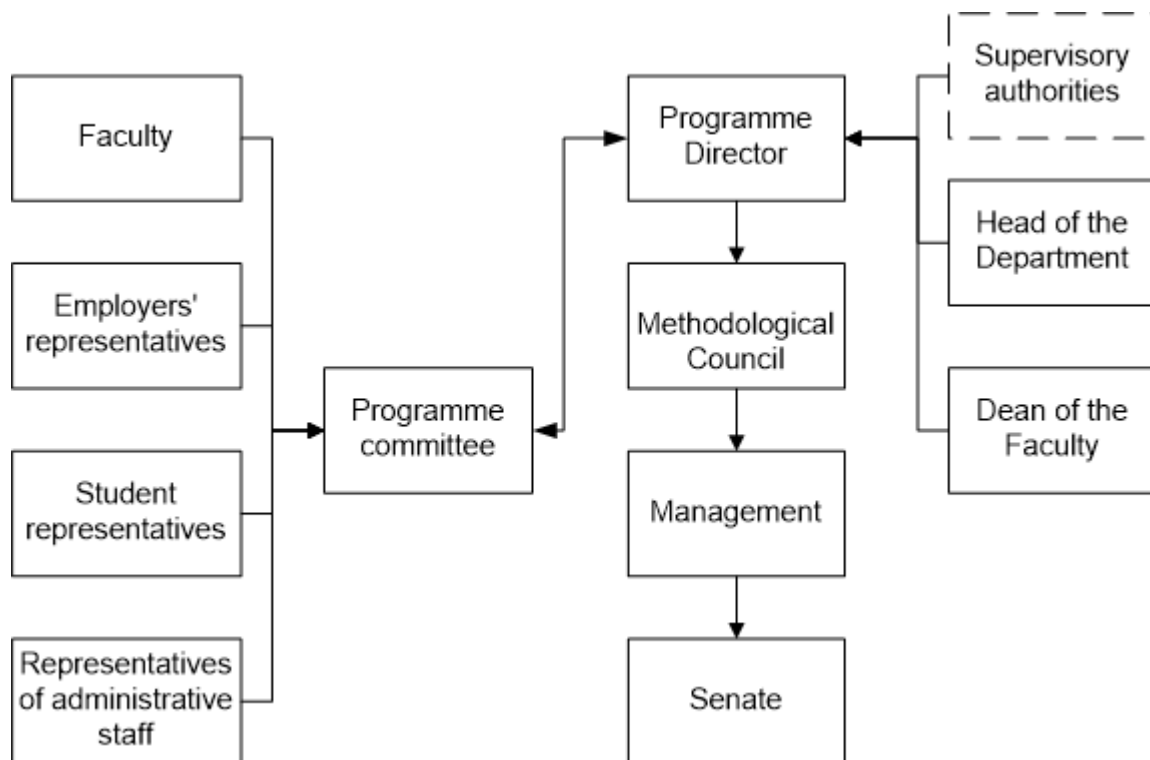


Figure 2.2. The management structure of a study programme

- **Methodological Council**

As a collegiate body, the Methodological Council of RISEBA plays an important role in the decision-making process concerning studies and adopts various normative documents that may affect programme management and the organization of study processes. Methodological Council consists of representatives of the respective study programme and administration, and its proceedings are

regulated by the ["Regulation on Methodological Council"](#).

- **Assessment of academic personnel**

According to the procedure applicable in the Republic of Latvia, the academic staff should be re-elected every 6 years in an open competition that facilitates the maintenance of high scientific, 70 pedagogical and organizational proficiency and continuous improvement of performance quality. Re-election of the academic staff to academic positions should take place under the Law on Higher Education Institutions and other laws of the Republic of Latvia, and RISEBA ["Regulation on election to academic positions"](#) and ["Academic personnel policy"](#). Re-election motivates the academic staff to maintain high-quality performance and allows the administration to carry out the targeted renewal of academic staff and its quality improvement by inviting new and promising members of academic staff.

Programme implementation

- **Complaints and proposals of students**

RISEBA has a ["Procedure for review of complaints and proposals"](#) that applies to students and employees of RISEBA and other stakeholders. This procedure applies to complaints and proposals related to the quality of services offered by the university, quality of its academic processes, technical infrastructure and teaching aids, as well as unethical or dishonest conduct by students, academic staff or administrative personnel.

- **Questionnaires for assessment of study courses and annual surveys of students**

The Questionnaires for assessment of study courses and annual surveys of students are a mandatory quality assessment tool at RISEBA. The respective processes are regulated by the ["Surveying procedure"](#). For surveying, the procedure sees Section 2.2 on feedback mechanisms.

- **Peer evaluation of teaching**

Faculties of RISEBA are invited to implement innovative approaches to teaching. Before a decision is made concerning the suitability of an approach, all new methods are assessed using student questionnaires and a professional inspection: peer evaluation of teaching. The annual inspection of quality during classes is ensured by the head of the respective department or other members of the academic staff using peer evaluation of teaching. Peer evaluation of the teaching system provides the exchange of experiences and information among the academic staff to improve the quality of academic processes. RISEBA has an approved ["Peer evaluation of teaching procedure"](#).

- **Quality assessment of study materials and use of Moodle**

Quality assessment of study materials and use of Moodle entails verification of the quality of study materials (both content-wise and form-wise) that is performed by administrators and directors of study programmes and heads of departments according to the approved regulations ["Basic requirements for learning and methodological materials of study courses"](#). Compliance of distance learning materials with the specific requirements of this form of study is checked by administrators of the distance learning unit.

- **Self-assessment report of the study programme and academic direction**

The annual self-assessment report of the study programme is an important programme review tool that demonstrates the achievements of the academic year, identifies the strengths and weaknesses of the programme, reflects on opinions of students and alumni about the academic processes and delivery of lecturers, facilitates implementation of the programme and lays down changes necessary

for further development. The assessment procedure is described in the ["Regulation on the preparation of a self-assessment report for an academic direction"](#).

- **Annual assessment of employee competences**

To perform a quality review and facilitate scientific, pedagogical, artistic and organizational development of the academic staff, an annual performance review is carried out under the approved "Performance management system", ["Competence model"](#) and ["Academic personnel policy"](#). Each member of the academic staff completes a self-assessment report followed by a worksheet and a discussion with the head of the respective department about the achieved results. As results of student surveys are one of the performance criteria for assessing the academic staff that is linked with the remuneration system, each member of the faculty is motivated to receive outstanding student feedback and assessment to further improve his/her course.

- **Compliance with principles of ethics and academic honesty**

RISEBA finds not only the scientific and pedagogical activities of its faculty important but also ethical aspects of their conduct. RISEBA is a part of the PRME initiative (Principles for Responsible Management Education) and applies these principles to its policy for academic personnel. RISEBA has adopted and is guided by a ["Code of Ethics"](#), and has an Ethics Committee that reviews possible violations of the principles of ethics and makes respective decisions. Special attention is paid to ensuring that in its pedagogical and scientific activities the academic personnel is guided by principles of anti-plagiarism. The ["Code of Academic Integrity"](#) and ["Regulation on plagiarisms"](#) have been prepared.

- **Curators**

To promote student awareness of processes taking place at the university, as well as their engagement and team-building, a curator is appointed for each group of a study programme and acts according to the adopted ["Curator procedure"](#).

- **Methodological seminars**

To ensure pedagogical development, the university organises monthly thematic methodological seminars that are devoted to learning processes, new teaching methods, pedagogy, diversity management and other topical issues.

- **Mobility of students**

To facilitate the internationalization of students, the university motivates students and staff to participate in exchange programmes. The mobility procedure is regulated by the ["Procedure for ERASMUS+ mobility at RISEBA"](#).

Programme results

- **Surveys of internship organisations, employers, and alumni, and assessment of the thesis process**

Surveys of internship organisations, employers, and alumni, and assessment of the thesis process is a mandatory quality assessment tool at RISEBA. Surveys are regulated by the ["Surveying procedure"](#), ["Internship regulation"](#) and ["Regulation on final tests and examinations"](#). For the surveying, the procedure sees Section 2.2 on feedback mechanisms.

- **Summary of evaluations by the State Examination Commission**

After the defence of all state tests and examinations, the commission prepares a written report indicating its assessment with regards to the topicality of bachelor's and master's thesis topics and

72 their alignment with the study programme, reporting the most common errors and assessing the general quality of the defended thesis. The results are summarised and forwarded to the respective programme director for improvement of the thesis process and programme content. The submission of the said assessment is regulated by the ["Regulation on final tests and examinations"](#).

- **External quality assessment**

In addition to the accreditation procedure laid down in the legislation of the Republic of Latvia, RISEBA has also received the international quality accreditation of the Central and East European Management Development Association (CEEMAN).

The following key **quality indicators** that are grouped into 6 groups are used for the assessment of the university's results:

1. teaching;
2. research;
3. innovation;
4. internationalization;
5. the competitiveness of graduates;
6. resources.

Resorces that are currently being developed in more detail and implemented.

2.2.2. Analysis and assessment of the system and the procedures for the development and review of the study programmes by providing specific examples of the review of the study programmes, the aims, and regularity, as well as the stakeholders and their responsibilities. If, during the reporting period, new study programmes have been developed within the study field, describe the procedures of their development (including the process of the approval of study programmes).

Development of new study programmes

Development, approval, amendments and termination of new study programmes at RISEBA are regulated by the ["Regulation on developing, amending and terminating study programmes"](#) (18.04.2018), prepared under the legislation of the Republic of Latvia and AIC (Academic Information Centre) guidelines "Guidelines on the preparation of descriptions of study programmes".

The Development of study programmes consists of three stages:

1. The Idea of the study programme and its feasibility study
2. Preparation of a description of a study programme
3. Preparation of documentation and submission to assessment bodies

Stage 1: development and feasibility study of an idea for a study programme

An employee of an academic or a scientific unit may develop a study programme (hereinafter, the initiator). Before a new programme is forwarded for assessment, the initiator should prepare substantial argumentation demonstrating, why a new study programme is needed at the **Architecture Department of RISEBA**, namely, he/she should indicate the goal of the programme, its expected results, information about the target group, and analyses of the main

competitors, etc. The department provides the programme initiator with the comments, if necessary. When a recommendation from the respective department is received, the initiator should prepare and submit a document substantiating the development of the new programme to the RISEBA Management group.

The Management group reviews the document and decides whether the university will introduce the new study programme. If they decide that the programme cannot be implemented, it is refused. If the university is able and needs to implement the new study programme, and if the new 73 programme is in line with the university’s mission, vision, and strategy for the development of new study programmes, the Rector shall issue an order to start the development of a new study programme and appoint the responsible official: a programme developer, decide about the composition of the programme development working group, determine the financial and technical means required for the development and enter into an agreement with the programme developer about the new programme. After a rector’s order, the developer of the programme should prepare its description under external normative acts.

Stage 2: preparation of a description of a study programme

During the preparation of a programme description, the programme developer should discuss the content of the programme with sectoral experts that represent the respective industries. After the recommendations of experts, corrections are made, if necessary.

The draft description of the programme should be presented to the Management group, which reviews the content of the programme and its alignment with the mission and vision of RISEBA more thoroughly, and proposes final corrections. If the draft programme is found compliant, the programme developer submits it for approval to the Senate.

The Senate reviews the prepared draft programme. If the programme is approved, the programme developer prepares the licencing package and submits these documents to the Quality Manager. If the programme is not approved, its implementation is refused or any corrections are requested for re-submission of the programme to the Senate.

Stage 3: preparation of documentation and submission to assessment bodies

The Quality Manager should review the prepared programme description under the requirements of the Cabinet of Ministers of Latvia and AIC Guidelines on the preparation of descriptions of study programmes, and provide the programme developer with comments about any corrections, if necessary.

The prepared programme documentation is to be submitted by the developer to the AIC to initiate the licencing process.

See stages for the development of a study programme in Figure 2.3.

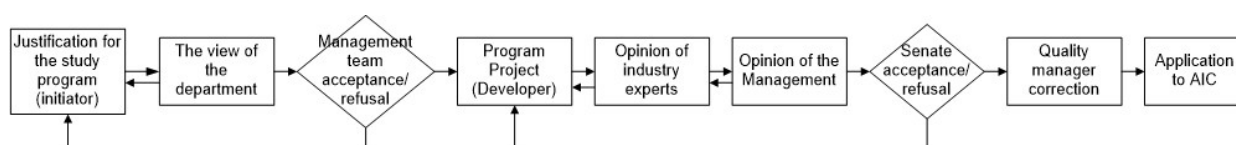


Figure 2.3. Development stages of new study programmes

During the reporting period (last six years), the planned professional master's study program "Architecture" was created, licensed and is currently operating successfully, thus providing students with a full-fledged and high-quality architectural education by the standard of the architect's profession.

Currently, work is underway to develop and implement a new specialization in Landscape Architecture for the professional master's program "Architecture". The development of the specialization of the mentioned study program was started after assessing the needs of the local and international labour market and the analysis of the potential employment prospects of the program graduates.

Review of study programmes

Review of study programmes in case of significant changes

After licencing of a study programme, it is reviewed on regular basis to monitor its sustainability, achievement of planned results, teaching quality, student expectations, and the prospects of graduates in the labour market depending on the development of the sector.

Every year, the dean of the faculty has discussions with programme directors about the development of study programmes and the need for any substantial changes or their termination. If a decision is made to introduce significant changes, it is discussed with the **Programme Council** consisting of sectoral experts and RISEBA students. After an opinion of the Programme Council, the dean discusses the above changes in the management group, where the nature of the changes and the resources required for their implementation are assessed. If the management group supports the said changes, the programme director prepares the documentation needed for the Academic Accreditation Commission (see Figure 2.4).

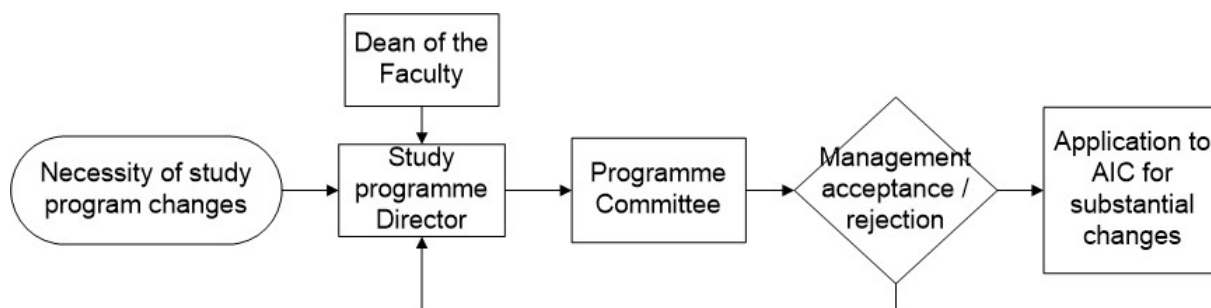


Figure 2.4. Procedure for the introduction of significant changes into study programmes

Annual review of study programmes

The annual self-assessment of a study programme is considered to be one of the most important elements of the internal quality assurance system. Once per year, as is required by the legislation of the Republic of Latvia and RISEBA 29.11.2017 "[Regulation on self-assessment reports of academic directions](#)", an internal self-assessment report of the study programme and the academic direction is prepared.

The **programme director** of the respective study programme is responsible for the annual description of study programmes and their quality, while the **Head of the respective department** is responsible for the annual self-assessment report of the academic direction and its quality.

The annual self-assessment report of the study programme or programme description demonstrates the achievements of the academic year, identifies the strengths and weaknesses of the programme, reflects on opinions of students and alumni about the academic processes and delivery of lecturers, facilitates implementation of the programme and lays down changes necessary for further development.

The Programme Council plays an important role in preparing the self-assessment report, as it is made

up of all stakeholders that express their views about the alignment of interdisciplinary communication of the study programme with the market requirements, decide about the inclusion or exclusion of specific study courses from the study programme, and discuss topical issues with students. When the Programme Council has provided its opinion, the self-assessment report is reviewed during a **department meeting** to decide about the implementation of the council's proposals from the point of view of resources, methodologies and technical feasibility.

After approval is received from the department the Dean of the faculty submits the final report to the **Vice-Rector for Studies** who forwards it for review to the **management group**.

The management group should assess the strategic direction and development trends of the programme, provide important recommendations about the need to review the study programme and introduce improvements. Programme directors should deliver a presentation to the management group about the critical analyses included in the description of the study programme indicating the following:

- goals and topicality of the programme in the market;
- analyses of the main statistics concerning the students;
- composition of the academic personnel working in the programme;
- SWOT analyses of the study programme;
- mapping of the study programme;
- development plan for the next year.

After an assessment of the management group, the Vice-Rector for Studies submits the annual descriptions of study programmes and self-assessment reports of academic directions for approval at the **Senate** before December 15 of the current year. After approval, they are made public on the RISEBA homepage (see Figure 2.5).

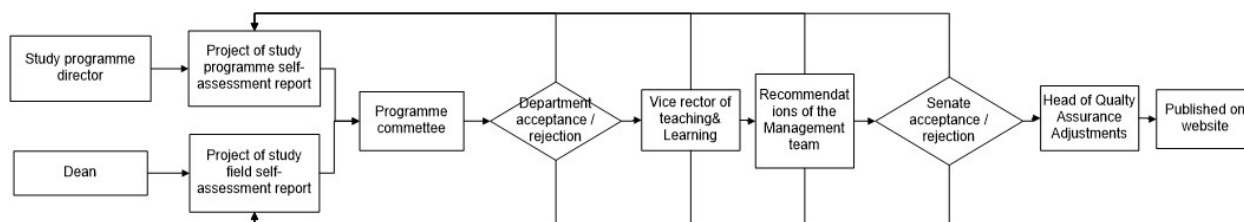


Figure 2.5. Annual review of study programmes and academic directions

Feedback process

RISEBA ["Surveying procedure"](#) lays down a procedure for receiving feedback about academic processes. These results allow for flexibility and the ability to rectify any deficiencies in the university's processes.

The frequency of questionnaires depends on their type. The following questionnaires are in use:

- Assessment questionnaire for a study course
- Assessment questionnaire for a study programme
- Annual survey of students
- Alumni survey
- Employer survey
- Survey for internship organisations
- Assessment questionnaire for the thesis writing process

Student and alumni surveys are sent electronically and are anonymous. Surveys of employers and

internship organisations are not anonymous to determine the quality of cooperation. The quality Manager is responsible for the surveys and questionnaires, and recording and processing their data.

Assessment questionnaires for study courses are a mandatory quality assessment tool to provide information to the academic staff and programme management about the achieved results and student satisfaction with teaching methods, at the same time facilitating the engagement of all students and academic staff in the improvement of the course.

After completion of each study course, students receive electronic questionnaires (webpolsurveys.com), which are later compiled and stored in the internal RISEBA system. The faculty of the respective study course receive the results of the surveying process of their study courses by e-mail, and they have an opportunity to provide their opinion about these results to the Quality Manager or the Programme Director. The latter should regularly monitor the compiled questionnaire results and take action to respond to students' comments. If any problems are detected, they are discussed with the respective member of the faculty even before the official performance review.

Surveying results are confidential and access to results of all courses offered at the university is granted only to the Rector, Vice-Rector for Development and the Quality Manager. Access to the surveying results concerning the academic staff of specific study programmes is made available only to the Programme Director of the respective programme, the Head of the Department and the Dean of the faculty.

At the end of an academic year, the Quality Manager prepares a rating of study courses, classifying them according to their average score. Survey comments concerning specific courses are marked with indicators that allow focusing on study courses that need improvements. If only positive opinions have been indicated in the questionnaire comments, the course is colour-coded green, if negative and positive comments - yellow, and if only negative comments - red.

Only surveys where the share of respondents was at least 25% of the total number of students in a specific group are taken into account. If the assessment of a specific member of the faculty is lower than the average assessment of all study courses or if negative comments have been received (yellow or red colour code), the respective programme director should discuss this situation with the member of the faculty and/or students, involving the Head of the department, if needed. The quality Manager is to be informed about the results of the interviews.

Results of RISEBA student surveys concerning the faculty are discussed with the respective Head of the department during the annual performance review of academic personnel to formulate specific tasks for the respective member of the faculty to improve the quality of classes, determine the remuneration category under the Academic personnel policy and to consider whether the member of the faculty should continue to teach the course.

See the surveying system for study courses in Figure 2.6.

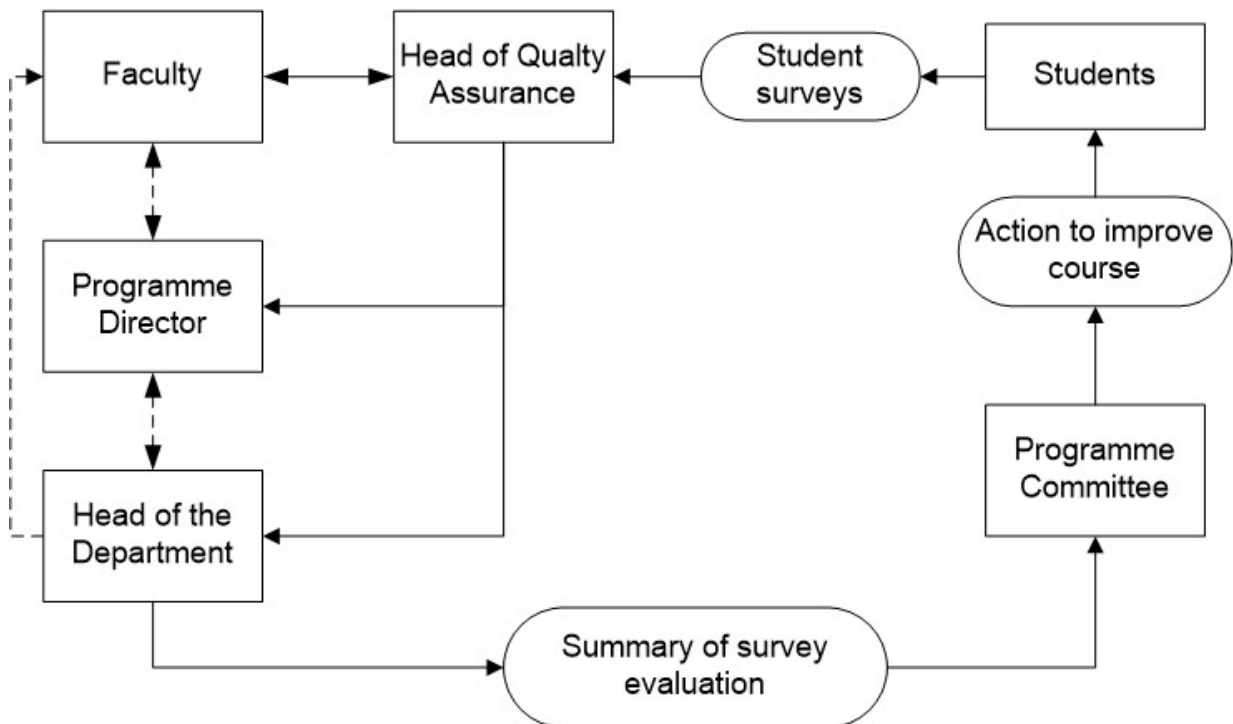


Figure 2.6. Surveying system for study courses

The goal of assessment questionnaires for study programmes is to assess the quality of organisation and implementation of study programmes. Assessment questionnaires for study programmes are recommended for all such programmes, and all students of the respective 77 programmes should participate in the surveying process. Students should fill in the questionnaires by the deadline indicated by the programme director.

The goal of annual student surveys is to determine the opinion of students about the organization of academic processes at the university, availability of material and technical resources, quality of activities of the student self-governance and other issues related to the studies and the academic environment. Questionnaires are completed electronically (webpolsurveys.com) at the end of each academic year.

The Student Council compiles questionnaire results and informs the management group and the Quality Manager of RISEBA about them.

Alumni surveys are a mandatory quality assessment tool to gather information about the quality of organisation and implementation of completed study programmes, as well as about the successes of graduates after graduation. All members of RISEBA alumni who have agreed to process their data after graduation, take part in the surveying process. The Quality Manager compiles the questionnaire results and informs the management group of RISEBA and the respective programme director about them.

Employer surveys are a mandatory quality assessment tool to receive information from employers about the knowledge, skills and competencies of graduates. The Quality Manager compiles the questionnaire results and informs the management group of RISEBA and the respective programme director about them.

The goal of questionnaires for internship organisations is to receive information about the knowledge, skills and competencies of interns. The respective bodies fill in these surveys on the lastday of the internship. The programme director compiles the results of all surveys and includes them

in the annual description of the respective study programme.

The goal of assessment surveys concerning the preparation of the thesis is to determine students' opinions about the writing of the thesis and the cooperation of the scientific or creative supervisor with the student to improve the quality of the above processes. The Academic Department conveys all surveys to the Quality Manager to summarize the results. The compiled results are forwarded to the respective programme director in an electronic form to improve the process of preparing the thesis and cooperation with the scientific or creative supervisor. In addition to the student's assessment of the performance of the scientific supervisor, he/she also provides feedback concerning the cooperation of the respective student with a thesis supervisor during its preparation. The results of this questionnaire may be taken into account by the State Examination Commission when it evaluates the quality of the thesis.

2.2.3. Description of the procedures and/or systems according to which the students are expected to submit complaints and proposals (except for the surveys to be conducted among the students). Specify whether and how the students have access to the information on the possibilities to submit complaints and proposals and how the outcomes of the examination of the complaints and proposals and the improvements of the study field and the relevant study programmes are communicated by providing the respective examples.

RISEBA has a "[Procedure for review of complaints and proposals](#)" (16.09.2020) that applies to all students and employees of RISEBA, and all stakeholders, and is published and freely available on the [RISEBA homepage](#).

This procedure covers complaints and proposals that are related to the following:

- Quality of services provided by the university
- Quality of the study process
- Quality of technical or learning means
- Dishonest or unethical conduct by students, academic staff or administrative personnel.

A complaint or a proposal can be submitted to any RISEBA employee or RISEBA Quality Manager in writing by filling in a specific form, orally or by phone, as well as using the RISEBA Contact us form available on the [RISEBA homepage](#) or by e-mail from my_opinion@riseba.lv. If a complaint is submitted to an employee, it should be forwarded to the Quality Manager who registers it and appoints a person responsible for its resolution depending on the content of the complaint, and who also monitors the course of the resolution of registered complaints or implementation of the proposal, and reviews and changes the current processes considering any non-compliances with RISEBA processes found earlier.

A proposal is to be forwarded to the person responsible for its implementation (if any), who reviews it and provides the Quality Manager with information about the implementation of the possible proposal plan or the refusal to implement the proposal within 10 business days. The Quality Manager records the decision in the register of complaints and proposals.

The complaint procedure consists of three stages:

Stage One (review of an informal complaint - immediately)

If a complaint can be resolved informally and quickly in cooperation with RISEBA personnel and without an in-depth examination, an apology or explanation of the problematic situation in the respective RISEBA unit (in the presence or remotely by e-mail or phone) can be considered a resolution. The person who receives a complaint should inform the direct supervisor who analyses the situation and informs the Quality Manager if needed.

If the complaint cannot be resolved during Stage One, the initiator is invited to formalize the complaint, moving on to Stage Two of the complaint procedure.

Stage Two (review of a formal complaint - up to 30 days)

Complaints that are more complicated and require more detailed examination are forwarded to the Quality Manager who registers them and attempts to find solutions together with the responsible head of the structural unit and discusses a resolution plan. The person responsible for the resolution of the complaint should e-mail any decision made in the respective case to its submitter. Considering the content and resolution of the complaint, the Quality Manager should analyse processes that require improvement and make any changes that are needed.

Stage Three (consideration of contested decisions by higher decision-making bodies - up to 30 days)

If upon completion of Stage Two the applicant is still not satisfied with the solution, the Stage Three - appeal commences. The applicant should provide written arguments in support of his/her opinion by submitting them to the Quality Manager of RISEBA who decides about the involvement of a higher decision-making body - the Programme Council, the Court of Arbitration, the Senate, etc. in the review process.

See a more detailed description of each procedure and responsible individuals in the "[RISEBA Complaint and proposal review procedure](#)".

During the reporting period, one complaint was officially received in the direction of Architecture and Construction.

Complaints about the reporting period 2016/2020.

In 2020, there were a total of 20 official * complaints, none (0) towards Architecture.

2019 - 25, In Architecture - 1.

2018 - 27, Architecture - 0.

2017 - 29, Architecture - 0.

2016 - 19, Architecture - 0.

* Informally resolved complaints are not listed.

All disagreements and ambiguities that arise in the study process are resolved through negotiations.

2020/2021 During the study year, several oral complaints were received from students, for example, about difficulties in conducting practical classes and group work remotely in the conditions of the Covid-19 pandemic, about errors in the e-riseba system, about the way of teaching theoretical subjects in remote classes.

All disagreements and ambiguities that arise in the study process are resolved through negotiations to find the best solution to ensure the quality of the study process.

2.2.4. Provide information on the mechanism for collecting the statistical data, as developed by the higher education institution/ college. Specify the type of data to be collected, the regularity of collection, and the way the information is used to improve the study field. Describe the mechanism for obtaining and providing feedback, including with regard to the work with the students, graduates, and employers.

RISEBA regularly compiles and analyses statistical data and provides them to the Central Statistical Board (CSB) on annual basis. The key indicators that are analysed and later discussed at the RISEBA management group are as follows: number of students, the total number of admitted students and by study programmes, total number of deregistered students and by study programmes, number of mobile students, number of students that were awarded a degree, total number of personnel, number of the academic personnel, income and expenditure in comparison to the previous year in full time and part-time programmes. During the admission period, a weekly review of concluded agreements and students admitted by the study programme is carried out.

RISEBA also summarizes data for the Central Statistical Bureau about the employment of RISEBA graduates, registered unemployed, occupations of graduates, and the number of emigrated graduates by sectors and study programmes. The data does not contain sensitive data and are submitted only in aggregate form at the end of each year. To prepare the above data, information submitted to the CSB by the State Employment Agency and the State Revenue Service is used.

In addition, to improve the academic direction the below indicators are analysed in more detail.

- **Statistical data on reasons for deregistration**

The university analyses reasons for the deregistration of students in each study programme. A student who has prepared a deregistration request indicates reasons for his/her desire to terminate studies: inability to meet academic requirements, financial reasons, personal/family circumstances, the programme does not meet a student's expectations, new employment possibilities, inability to work and study at the same time, other (not returning after a break, refusal from OCMA, etc.). In cooperation with the IT department, RISEBA Quality Manager compiles data on the said reasons and analyses them, calculating the share of each reason in the total number of all students deregistered from the programme. These results allow determining, which are the dominating reasons and whether the student terminated his/her studies due to deficiencies in the study process or content of the study programme, or if there were personal reasons. On annual basis, the results are sent to programme directors and discussed with the management group during the presentation of self-assessment reports, when action plans for the decrease in the number of students deregistered from each study programme are considered.

- **Rating of academic staff depending on students' assessment of the study course**

At the end of the academic year, the Quality Manager of RISEBA compiles summary data from student surveys on study courses calculating the average assessment given to specific courses. The results are then arranged in numeric order starting with the courses that were valued the highest and ending with those that received the least points. These data are taken into account, when members of the faculty are invited to teach study courses and when study plans for the next year are prepared. If the assessment is unacceptably low, the respective member of the faculty is not invited to teach the course. If the assessment is average, the programme director discusses it with the member of the faculty and points to deficiencies that need to be corrected during the next academic year.

The teachers involved in architecture and construction have received recognition from the students in the form of the nomination "Favourite Teacher". such as Dina Suhanova.

Assessment of faculty categories

At the end of each academic year, permanent members of the faculty have interviews with the respective Head of the department during which the performance of academic staff is assessed following several performance criteria. As a result, all members of the faculty are grouped into four categories, which affects their remuneration scale for the next year. The results are compiled by the Vice-Rector for Studies, who provides information about the share of specific categories of faculty at the university and the academic direction. The Vice-Rector for Studies discusses these issues with respective heads of departments to agree on the possibility to improve the grading category of faculty that has a lower score.

Number of complaints

At the end of each academic year, RISEBA Quality Manager compiles data on the number of received complaints, their dynamics and topics of complaints. This analysis allows the detection of specific problems that need to be solved in the future and requires adequate preventive measures to ensure that these problems do not re-occur. The results are reported to the general meeting of employees at the beginning of the academic year, underlining any deficiencies.

Summary data on faculty qualifications

On annual basis, the director of the study programme assesses the qualifications and education of academic staff working in each study programme. According to RISEBA's strategic plans and the guidelines of its Academic personnel policy, the share of academic staff with a PhD should be at least 70%. According to the Academic personnel policy, the programme director should invite more teaching staff with doctoral degrees to the offered study programme. Annual results are compiled, analysed during department meetings and made public during the annual RISEBA meeting at the beginning of the academic year during which all personnel is informed about the achieved results and targets for the next academic year.

Assessment of scientific and creative supervisors

RISEBA Quality Manager reviews the results of surveys of last year's students about the organisation of their thesis process and the performance of scientific and artistic supervisors. The compiled results are forwarded to the respective programme director in an electronic form to improve the process of preparing the thesis and cooperation with the scientific or creative supervisor.

Summary of the State Examination Commission

The Quality Manager of RISEBA summarizes the data provided by the State Examination Commission concerning the quality of the defended thesis. After the defence of all state tests and examinations, the commission prepares a written report indicating its assessment with regards to the topicality of thesis topics and their alignment with the study programme, reporting the most common errors and assessing the general quality of the defended thesis. The results are summarised and forwarded to the respective programme director for improvement of the thesis process and programme content.

2.2.5. Specify the websites (e.g., the homepage) on which the information on the study field and the relevant study programmes is published (in all languages in which the study

programmes are implemented) by indicating the persons responsible for the compliance of the information available on the website with the information published in the official registers (State Education Information System (VIIS), E-platform).

The information on the programmes of the Architecture and Construction study direction is available on the following websites:

Website of RISEBA University of Applied Sciences www.riseba.lv and the website of the Faculty of Architecture and Design of RISEBA University of Applied Sciences: <http://architecture.riseba.lv/lv>

Bachelor's Study Programme *Architecture*:

- In Latvian
- In English

Master's Study Programme *Architecture*:

- In Latvian
- In English

The information on the website of RISEBA and the website of the Faculty of Architecture and Design is reviewed and, if required, specified before each admission, as well as in the cases, where considerable topical changes have occurred in the programmes.

The person is responsible for the content of information on the website of the Programme - Programme Director, the person responsible for technical support of information publication - Employee of the Marketing and Communication Department of RISEBA.

2.3. Resources and Provision of the Study Field

2.3.1. Provide information on the system developed by the higher education institution/ college for determining and redistribution of the financial resources required for the implementation of the study field and the relevant study programmes. Provide data on the available funding for the scientific research and/or artistic creation activities, its sources and its use for the development of the study field.

Ever since RISEBA was founded, income from tuition fees has been the main source of financing for the study process. Tuition fees are covered by the funds of private individuals and/or legal entities. These may be the personal funds of students, the personal funds of students' parents and other relatives, as well as the funds of students' employers. Students have the opportunity to apply for student loans with a pledge made in the name of the State, commercial loans or sponsors' funds. RISEBA provides the necessary consultations for receiving loans and accepts applications in matters of student loans.

The amount of tuition fees and payment procedure for each study year is decided and approved by the RISEBA Senate. The following payment options have been set at RISEBA: for the whole study programme overall, for one study year, for one study semester or in accordance with the tuition fee schedule (monthly fee) specified in the study agreement, i.e. 9 payments during each study year.

Overall, of all the university's income, over 80% is made up of income from tuition fees. RISEBA also actively works in the field of adult education, which is not related to higher education, organising various courses and seminars, participating in procurements and projects, as well as leasing out premises for organising educational events. The overall income structure can be seen in Figure 3.1.

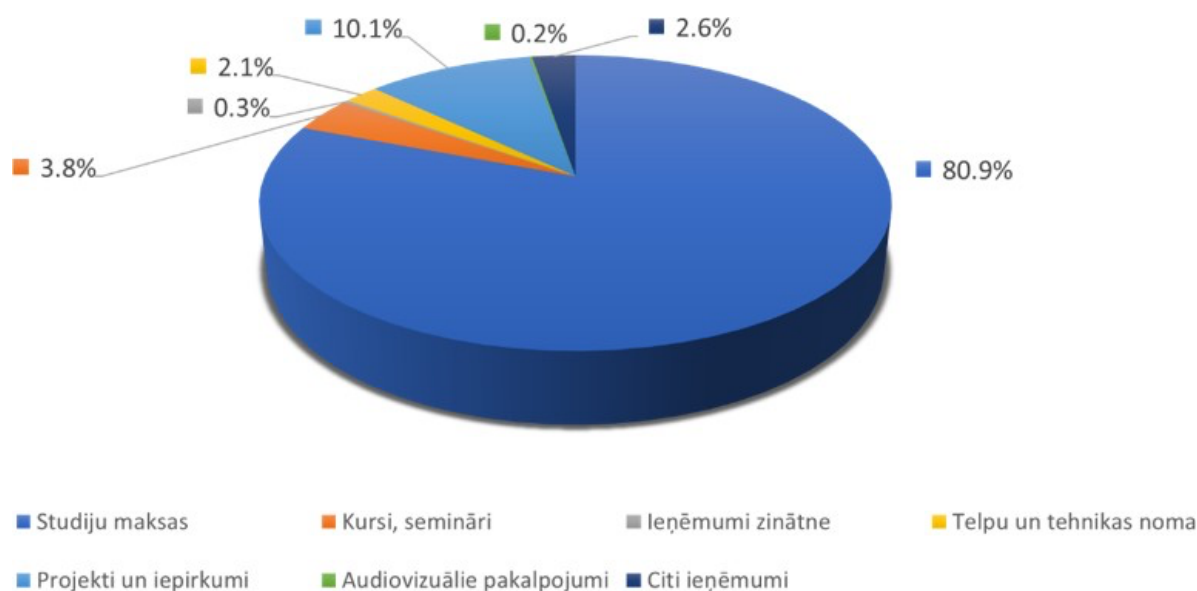


Figure 3.1. RISEBA income structure

RISEBA financed budget places are available to students, whose grades upon starting or continuing their studies are exemplary (average grade of at least nine points and with no grade lower than eight points). Budget places are fully financed from RISEBA funds. In consultation with the Student Council, "Procedures for the Awarding and Rotation of RISEBA Budget Places" have been developed, in order to ensure their availability for the most outstanding students. Overall at RISEBA, counting all the study programmes, 18 budget places are available in each course. Budget places are awarded to full-time daytime section students. In addition, the aforementioned budget place students to receive various discounts. Overall, students have access to 20 different types of tuition fee discounts for excellence in their studies, achievements in sport, kinship, cooperation partners, alumni, social support, etc. Tuition fee discounts are set in accordance with "[Regulations regarding Tuition Fee Discounts](#)".

1. Every year, the financial resources required for the implementation of the Architecture and construction field of study and its corresponding programmes are planned in accordance with RISEBA's budget and expended in line with the tariffs, plans and cost estimates approved by RISEBA's management, thus ensuring control over the expenditure of financial resources. The Student Council is financed from RISEBA's centralised funds in conformity with the Law on Higher Education Institutions and RISEBA provides the council with the necessary premises (infrastructure).
2. Every year, when planning financial resources, funds are allocated for trips related to the study process and scientific research work. These funds are used to pay for employees' trips to participate in international conferences and scientific publications, in addition, royalties are paid for publications in high ranking academic magazines, the indexed Web of Science or Scopus.

3. The Architectural study direction, together with the Audiovisual Media study direction, publishes the scientific journal "ADAMarts", where academic personnel as well as students and alumni publish their articles. The study direction heavily relies on the publications of the students, semester research analysis summary booklets of design study courses are regularly published, as well as the yearbook of final papers is issued every year.
4. Funding is allocated in the RISEBA budget for buying literature and subscribing to electronic databases and publications, which are available to both employees and students.
5. The budget earmarked for the supply of books in the "Architecture" study direction amounts to EUR 1,000 per year.
6. Every year scientific and student conferences are organised. In addition to RISEBA, sponsors are also involved in financing the student conference "Changing World - in Search of New Solutions", which makes it possible to pay the authors of the best reports cash prizes of up to EUR 450. The best publications by the students and final thesis are not only published in the publications by RISEBA but also in journals of cooperation partners, such as "Latvijas Arhitektūra".

In recent years, special attention has been paid to the opportunity to take part in various projects and procurement procedures, which are related to science and education, and the amount of funds attracted therein is growing. For example, students can take part in the ERDF project "Development of Value-Based Skills for Improving the Quality of Human Capital", No. 1.1.1.1/18/A/151.

Faculty members and students in the Architecture study direction are offered the opportunity to participate in foreign and EU financed projects, including ERASMUS+, thus ensuring knowledge transfer and the development of skills and competencies.

In the realm of financial planning and oversight, the modernisation of the accounting system has begun, including the replacement of the bookkeeping and financial management system. Financial planning and oversight will be conducted based on the Adizes Methodology. Modernisation of financial accounting will ensure more detailed and efficient financial oversight, including faster information sectionally by the study programme.

The percentage breakdown of costs per student in the Management study direction programmes is shown in Table 3.1.

Table 3.1

Percentage breakdown of funding per student

| Nr. | Cost item | Academic Bachelor's study programme Architecture | Professional Master's study programme Architecture |
|-----|--|--|--|
| 1 | Faculty salaries (incl. taxes) | 56.9% | 53.8% |
| 2 | Remuneration for freelance faculty members | 15.6% | 14.7% |
| 3 | Premises rental (incl. repairs and management) | 3.9% | 3.4% |
| 4 | Utility charges | 6.7% | 5.9% |
| 5 | Business trips, qualification top-up | 2.7% | 5.5% |
| 6 | Depreciation of fixed and intangible assets | 6.1% | 5.3% |

| | | | |
|----|---|------|------|
| 7 | Low value and rapidly depreciable inventory | 0.3% | 0.2% |
| 8 | Copy expenditures for the study process | 0.1% | 0.1% |
| 9 | Internet services | 0.4% | 0.3% |
| 10 | Computer hardware maintenance | 0.1% | 0.1% |
| 11 | Student internship costs | 0.7% | 0.6% |
| 12 | Research costs | 1.2% | 2.5% |
| 13 | Accreditation costs | 0.9% | 3.8% |
| 14 | Study process provision expenditures | 0.4% | 0.3% |
| 15 | Student Council expenditures | 2.1% | 1.8% |
| 16 | Repair costs | 0.9% | 0.8% |
| 17 | Conference and seminar expenditures | 0.3% | 0.3% |
| 18 | Other costs related to the study process | 0.7% | 0.6% |

The table includes direct and overhead costs and their breakdown, but do not include administration and marketing costs and those unrelated to economic activity, and also do not include project costs. Calculations are made on the basis of costs per student.

The minimum number of students in the Architecture bachelor's studies programme is 10. The number of students in the master's programme is 7.

2.3.2. Provide information on the infrastructure and the material and technical provisions required for the implementation of the study field and the relevant study programmes. Specify whether the required provision is available to the higher education institution/ college, available to the students, and the teaching staff.

To ensure the implementation of the study direction "Architecture and Construction", RISEBA takes care of an appropriate methodological, materially-technical and informative base.

Since the university was founded, RISEBA has significantly expanded its facilities used for academic purposes. The total area of premises was 11350.61 m². The study process at RISEBA is implemented at three buildings in Riga - at Meža Street 3 and Durbes Street 4 (H2O6 RISEBA Architecture and Media Centre, Riga's creative quarter section (see Table 3.2.)). The building at Durbes Street 4 is adapted for people with special needs.

Table 3.2.

RISEBA infrastructure

| Meža Street 3, Riga | Durbes Street 4, Riga | Total |
|---------------------------------------|--|---------------------------------------|
| 18 teaching facilities (668 seats) | 9 teaching rooms (263 seats) | 27 teaching facilities (951 seats) |
| 3 computer classrooms(85 seats) | 4 teaching facilities (video editing studio/ computer classrooms) (71 seats) | 7 computer classrooms (156 seats) |
| Copying Centre | 2 video editing workspaces (5 seats) | |
| Student Council premises | architecture and design studio(731 m ²) | |
| | architects' workshop | |
| | photo studio (30 seats) | |
| 1 meetingroom | sound recording studio(10 seats) | |
| | Video studio (50-60 seats) | |
| | Art studio (15 seats) | |
| | Acting room (30-40 seats) | |
| Creative BusinessIncubator | Media laboratory (5 workstations) | |

All auditoriums are fitted with visual demonstration equipment. Powerful stationary video projectors are installed in the auditoriums, and additional monitors are installed in the largest auditoriums to ensure better visibility from the back rows.

In 2021, the resources of the faculty of architecture and design are supplemented with new plotters (Canon TM 305), a multifunctional copier (Canon 3730i) and a computer class with 12 workstations with the software required for the implementation of the course (full set of Adobe CC, Autodesk Building Design Suite, SketchUp, Rhino, ArchiCAD, MS Office). Installation of LED lighting at the RISEBA building in Meža iela 3 and Durbes iela 4 has been implemented.

3.3.1. Provide information on the system and procedures for the improvement and purchase of the methodological and informative provision. Description and assessment of the availability of the library and the databases to the students (including in digital environment) and their compliance with the needs of the study field by specifying whether the opening times of the library are appropriate for the students, as well as the number/area of the premises, their suitability for individual studies and research work, the services provided by the library, the available literature for the implementation of the study field, the databases available for the students in the respective field, the statistical data on their use, the procedures for the replenishment of the library stock, as well as the procedures and possibilities for the subscription to the databases.

The library of RISEBA University of Applied Sciences implements the promotion of study processes and scientific work, as well as provides the required information services to the students and academic personnel by offering the information resources that are available in the reserves of the library, as well as by ordering information resources from other libraries for a certain period of time (Inter-library subscription). The library uses the integrated library information system ALEPH 500 and is involved in the formation of the national library [joint catalogue](#). The library provides the teaching and reference literature required in the study process, access to databases and press publications, provides services to the university's students and academic personnel and employees – computerised workspaces for use during the daily study process, advice on the use of e-services, training in how to improve information search skills, bibliographical references, and compiles lists of theses and archives them. Configuration of the library's collection is performed in accordance with the content of the university's study programmes, in collaboration with study programme directors and academic personnel. The RISEBA library has a collection of over 26,000 information sources: monographs, reference literature and press publications in Latvian and foreign languages, and ROM digital versatile disks.

60% of the library's books and other information units are in English, 15% - in Latvian and 25% in Russian.

As of 17 June 2016, the RISEBA library has been accredited by the Ministry of Culture of the Republic of Latvia and has been granted the status of a local library.

The library spans a total area of 453 square metres and is located at Meža Street 3. The library has a spacious reading room with 32 workspaces, as well as a computer space with 6 computerised workspaces. For the convenience of students, the RISEBA library has two branches – at the

Architecture and Media Centre, Durbes Street 4, Riga. The library is open six days a week from 10.00 – 18.00, on Saturdays from 10.00-15.00.

Every year to support a quality study process, EBSCO Academic Search Complete (full-text publications in humanitarian and social sciences), Web of Science (full-text publications in computer sciences, social and humanitarians sciences and art, etc.), Emerald (business administration information, 4,116 scientific publications downloaded), **Greenleaf Publishing PRMEC** (e-books, which encompass various subjects: corporate responsibility, business ethics, environmental policy and governance), Leta.lv and Nozare.lv databases are subscribed to and used, which are also accessible remotely for use outside the university's premises. At the end of the year, the maintainers of subscribed databases send the library a statistical overview of the use of e-collections. The directors of the university's study programmes and faculty are surveyed on the quality of the resources offered by the subscribed databases, as a result of which a decision is made regarding further subscription to databases. Students and faculty are informed about freely accessible resources useful for studies: databases, e-magazines, e-books, as well as e-libraries and foreign full-text trial databases which are available for a certain period of time. The trial database approach is organised with the intermediation of the Cultural Information Systems Centre. In 2018, free trials of **Taylor&Francis Group eBooks** were arranged.

The university's homepage provides direct access to subscription databases and free resources, as well as trial databases. Our students have the opportunity to use the databases provided by the National Library of Latvia, as well as another university (LU, RTU, RSU, etc.) libraries. The university has signed a cooperation agreement with Harvard Business Publishing. Faculty members have the opportunity to order and use, as well as to share information (cases, online courses, simulations, videos, etc.) required for passing study programmes. For the requirements of student and faculty members, the library subscribes to press publications: Dienas Bizness, Kapitāls, Ir nauda, Harvard Business Review, Blumberg Business Week, The Economist, DETAIL, A10, etc.

Information is available on the RISEBA university homepage about the library, as well as links to its [catalogue](#) and subscribed databases, as well as its regulations and terms of use.

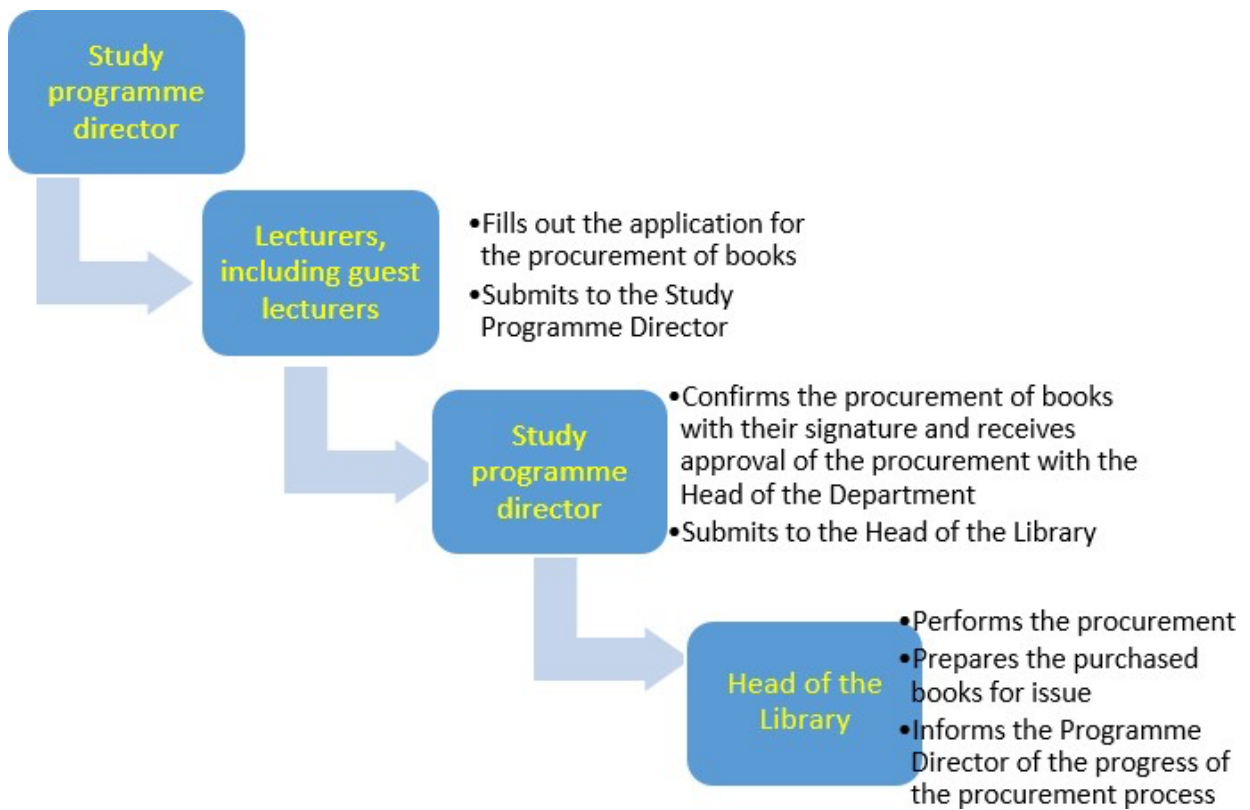


Figure 3.2. Process of book procurement

Procurements of information resources are performed in accordance with the budget of the Library, which is planned for the following academic year at the end of each academic year. The budget of the library is approved by the RISEBA rector. The granted financing is used for the purchases of the required sources of information, payment for the subscribed databases and subscription for periodical issues.

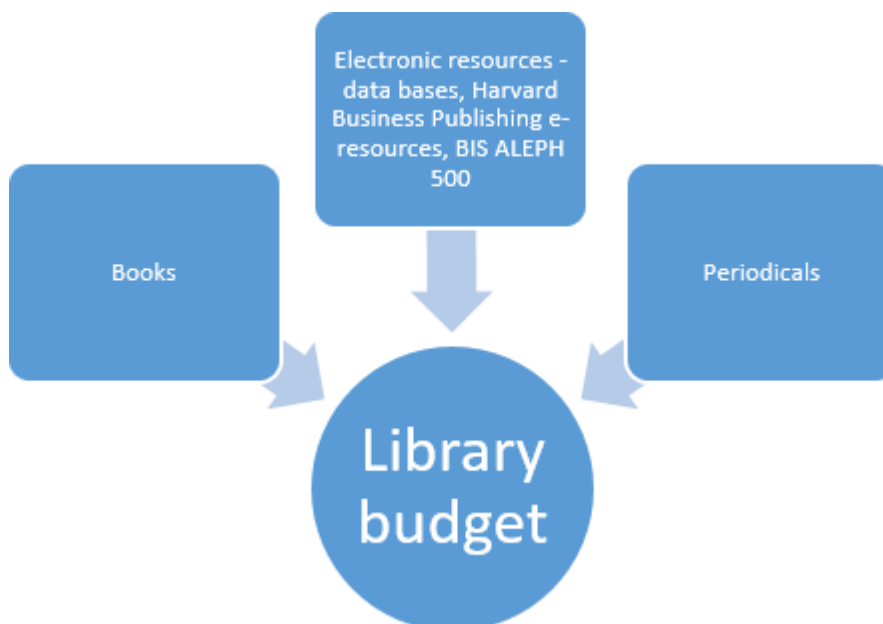


Figure 3.3. Budget items of the library

In 2015/2016, the transformation of the library of the Architecture programme was performed by creating an open reading room that is accessible to students (Durbes iela, Room 304). In 2016/2017, the collection of books required for architectural studies was supplemented (purchased, as well as received as a gift) by 101 new units. The number of literature units is supplemented

within the framework of the budget specially provided for that purpose every year and in accordance with the procurement procedure of the books. At the end of the reporting period, the total number of books specifically for the architecture and construction sector – was 470 units. The following periodical publications are subscribed to and are available to students: El Croquis, Detail, The Architectural Review, Architecture of Latvia, Construction of Latvia. Periodical publications of the previous years like Latvijas Arhitektūra, Deko are also available in the reading room.

In the 2016/2017 academic year, the architectural students were offered access to the “Birkhauser” online database “Building types online” in trial mode.

3.3.2. Provide a description and assessment of information and communication technology solutions used in the study process (e.g., MOODLE). If the study programmes within the study field are implemented in distance learning, the tools specially adapted for this form of study must also be indicated.

Implementation of the RISEBA study direction takes place in almost all auditoriums and computer classes at RISEBA and in individual instances, also in editing rooms. The referred to process is served by 261 computers with an installed Windows operating system, including 75 laptops and 84 Apple computers. To meet the requirements of the learning process, 198 computerised workspaces have been duly equipped, 160 of these workspaces are directly available to students. Computers have Intel Core processors with MS Windows and MS Office software or Apple macOS X software. Laptops and powerful WIFI hardware mean that auditoriums can quickly be transformed into computer classrooms, enabling study processes to be planned dynamically. One computer classroom at Meža Street 3 and all computer classrooms at Durbes Street 4 are equipped with high-performance computers, which can provide fast processing of audiovisual materials and training. Computer hardware is regularly inspected and gradually updated.

All RISEBA computers are connected to the local computer network and the Internet. A wireless Internet connection (WiFi) is available on the premises of the university. The speed of the Internetconnection is 200 Mbps (Meža Street 3), 200 Mbps (Durbes Street 4).

RISEBA has 14 multifunctional network printers with scanners. Four of these are colour printers. Employees and students have access to a copy centre to print or bind handouts, coursework, etc.

For preparation and demonstration of multimedia presentations and teaching materials, as well as for data visualisation, various multi-environment technical capabilities are used: conference auditoriums with LCD and laser projectors, screens and sound equipment; 5 portable projectors; and 5 laptops that can be used together with the portable projectors without additional stationary equipment.

Lectures can be recorded at the university by means of stationary equipment in 3 auditoriums – in 2 auditoriums at Meža Street 3, where the lecture recording capability is based on the RISEBA subscribed Panopto video recording, management and broadcasting systems and in 1 auditorium at the H2O6 Architecture and Media Centre (Durbes Street 4), where the lecture recording option is based on Blackmagicdesign and Thomson Video Networks VS7000 video broadcasting systems. In addition, the university offers the possibility to provide video recordings of lectures with a portable multi-camera equipment system (Live GV Director Nonlinear Live Production System), which provides recording and broadcasting with 8 cameras (Sony FS700 series cameras with a special SLOW MOTION function and 4K video format), as well as 3D filming with Insta 360 Pro cameras.

Rode mic, Rode GO II, Shure mic, Sennheiser Gv series and AVX ME2, MKE600, Zoom H6 are used for audio recording.

As of 2012/2013, the process of studies is being implemented at the Architecture and Media Centre H206 (Durbes iela 4), where the following facilities are available to the students - photo studio (equipped with mobile BOWENS Gemini 750 and 400Rx lighting equipment), sound recording studio (equipped with stationary and mobile audio recording and processing equipment, Yamaha N16, ALLEN&HE-ATH Q16, ALLEN&HEATH D Live, BOSE 2x F1 Model 812 Flexible Array loudspeakers with 2x F1 Subwoofer, Martin audio), video studio (equipped with stationary lighting equipment ARRI, Swit and MOLE-RICHARDSON-CO searchlight, cloakroom, makeup rooms, equipment and costume warehouse and black, green and blue background), three Video editing studios (59 workstations – equipment Apple computers with Apple Final Cut, Apple Logic and Adobe Creative Suite software), two Video editing work offices (one equipped with 2 Apple computers with Apple Final Cut, Apple Logic and Adobe Creative Suite software and second with 3 Apple computers with Apple Final Cut, Apple Logic and Adobe Creative Suite software), Media laboratory premises with 2 Apple computers with Apple Final Cut, Apple Logic and Adobe Creative Suite software and 2 Windows computers with Adobe Creative Suite software, actor mastery hall Sessions and independent works, where students and lecturers are able to use: video translation system Thomson Video Networks VS7000, multiple-camera Live GV Director Nonlinear Live Production System with 8 camera recording and translation option, which is supplied with Sony FS700 series cameras that are characterised by SLOW MOTION function and 4K video format. DJI Phantom 4 PRO PLUS, DJI Inspire 2 Premium Combo (CinemaDNG & Apple ProRes Activation Key + X5S), as well as 3D recording with Insta 360 Pro cameras. Rode mic, Rode GO II, Shure mic, Sennheiser Gv series and AVX ME2, MKE600, Zoom H6 are used for audio recording.

In 2011, RISEBA introduced the ERP system HansaWorld Enterprise (HW), which is widely used by businesses for managing financial resources. RISEBA has signed a contract with the HW supplier to customize the system to the requirements of the university's business and academic processes and to receive maintenance support. In April 2013, RISEBA introduced a web-based portal for student grades. HW is integrated with the e-learning platform MOODLE. As a result, the personal data of students and data from the study programme and courses are regularly synchronised between both systems. In 2019 the respective contracts were signed, the introduction of a new accounting system Horizon and Unimetis academic administration system was started, along with the above, mutual integration with the objective of improving RISEBA record keeping in terms of financial records and the study process will be performed, as well as better student services will be ensured. The basic modules of the new system started to operate early in the 2020/2021 academic year, while the MOODLE platform will be upgraded to the latest version. It is planned that all functions of the new systems will be introduced by late 2022.

As of 2020, RISEBA has been using the videoconferencing platform Zoom for the provision of remote studies. A purchase of 100 licences was made for lecturers to provide remote studies, the lecture halls were equipped with microphones, loudspeakers and web cameras. The equipment for hybrid lectures was also purchased: 3 conference devices Meeting Owl Pro, which include a 360-degree video camera, a microphone and loudspeakers, as well as 6 interactive boards, 3 interactive boards have been installed in the lecture rooms and 3 are mobile.

In 2021, RISEBA introduced the document management system Namejs, which ensures the circulation of internal and external documents at the university, including document signing with a secure electronic signature.

RISEBA has signed a contract for the use of MS Office educational software in the study

process, administrative work and for private use by students and lecturers.

For several years, RISEBA has used the IBM SPSS (Statistical Package for the Social Sciences) software package for statistical data analysis. IBM SPSS is installed in computer classrooms. In total, 38 user licences are available to the faculty and students. Data analyses in SPSS is included in all Management study direction programmes.

To carry out research, students and the faculty have access to 1 Smart PLS and 5 NVIVO licences.

In the study process, RISEBA students widely use the RISEBA subscribed e-platform Webropol. RISEBA has signed a contract for the use of Webropol in webform by an unlimited number of users.

In 2013, together with four other Latvian universities, RISEBA signed a contract for the development and use of a joint anti-plagiarism platform and launched it in 2014.

Currently, 25 Latvian universities and colleges are members of the joint anti-plagiarism platform.

As of 2021, RISEBA also uses the anti-plagiarism platform Original, which provides an opportunity to compare the content of student works against free access texts, as well as publications that are only available in the databases of scientific publishing houses. The platform is integrated with the RISEBA e-learning platform MOODLE, which allows one to perform automated plagiarism checks of all student works uploaded to the platform.

Once a year, an audit of material resources is conducted and the need is determined to update and augment them for the coming year and plans are updated for the development of IT infrastructure in years to come. Maintenance is conducted and software versions, computer network anti-virus software and the provision of firewalls are updated on a regular basis.

In the 2015/2016 academic year, significant changes in the area of technical provision of the Architectural programme – renovation of premises was performed in accordance with the project jointly developed by lecturers and students, and EUR 54,500 has been invested in new technologies. 3 stationary video projectors with computer stations were installed, special premises in a total area of 80 m² were equipped for the provision of the Master's study process, lecture rooms were separated, relocation of the Architectural Library – the reading hall was performed in the context of convenient accessibility. During the reporting period, the equipping of the modelling workshop and renovation of equipment (in addition to the investment in technical equipment performed in the previous period in the amount of EUR 2,400).

A large format printing device CANON 305 is available to the students of architecture. Printing works, procurement of paper and technical servicing of the plotter is partially subsidised by the university (students must pay EUR 0.50-2.00 for the printing works, depending on the format).

In the 2016/2017 academic year, 6 computers equipped with appropriate software (Adobe CC fullset, Autodesk Building Design Suite, SketchUp, Rhino, ArchiCAD, MS Office) were installed at the design studio for the students (Durbes iela 4, Office No. 302):

- Apple iMac 21.5" DC i5 2.8GHz/16GB/1TB/Intel 6200/Win10Pro OEM – 4 items.
- HP Z2 Mini G3 Performance Workstation Intel Xeon E3-1225/16GB/256GB+1TB/n Nvidia Quadro M620 2GB GFX/WIn10Pro + HP Z24nq monitor – 2 items.

An A3 scanner is available for students of architecture at the design workshop. Fee-based copying, as well as binding services, are provided by the Info Centre at Durbes iela 4.

3.3.3. Provide information on the procedures for attracting and/or employing the teaching staff (including the call for vacancies, employment, election procedure, etc.), and the assessment of their transparency.

Selection, recruitment, appointment and hiring of Architecture and construction study direction personnel like that of all RISEBA academic personnel takes place in conformity with the Republic of Latvia's laws and regulations, in accordance with recommendations drawn up by the World Bank for Latvia's universities, as well as AACSB guidelines for university academic personnel. In conformity with the university's mission and visions, as well as RISEBA's strategy, [Academic Personnel Policy](#) (hereinafter referred to as - APP) has been drawn up and approved. Its goal is to ensure that the university has highly qualified, professional and competent academic personnel. APP defines the most important criteria for selecting academic personnel – these are a Doctoral/doctorate degree, scientific or creative activity and professional or teaching work experience. In conformity with RISEBA Academic Personnel Policy, a detailed [Regulation regarding Election to Academic Positions](#) has been drawn up.

In the Architecture and construction study direction, as in the other study directions at the university, academic personnel (hereinafter referred to as - AP) are appointed in an open public competition in accordance with the requirements of the Law on Higher Education Institutions. Since RISEBA is the primary employer of these members of the faculty, unlike visiting faculty, they are made subject to stricter requirements concerning their scientific (creative) and teaching standard, and continuous improvement of qualifications. In addition, they also have to undergo the annual performance evaluation and assessment, which, in turn, guarantees higher wages. In order to ensure the requirement and evaluation of high-level personnel, the "[RISEBA Personnel Competence Model](#)" has been developed. In order to verify the compatibility of potential AP to the RISEBA quality requirements at the time of their appointment, personnel recruitment procedures not only provide

for analysis of the candidates' documents and an interview in person but also an open lecture for qualification evaluation and evaluation of candidates in the departments in profile.

Furthermore, in order to provide independent expert analysis of the candidate, by order of the Rector, a special Compatibility Commission has been approved at RISEBA University, whose task it is to provide an independent verdict on the compatibility of candidates for an academic position. The Compatibility Commission's proposals regarding the compatibility of the candidate are submitted to the university's Senate and are assessed together with the proposal made by the department in profile. The final decision is made by the RISEBA Senate in a secret vote. The candidates' competition for a vacant AP post is public and open. Before the election, the candidate is introduced to the working conditions and the potential draft employment contract. After the appointment, an employment contract is signed with AP.

3.3.4. Specify whether there are common procedures for ensuring the qualification of the academic staff members and the work quality in place and provide the respective assessment thereof. Specify the options for all teaching staff members to improve their qualifications (including the information on the involvement of the teaching staff in different activities, the incentives for their involvement, etc.). Provide the respective examples and specify the way the added value of the possibilities used for the implementation of the study process and the improvement of the study quality is evaluated.

A uniform procedure has been developed at RISEBA University for ensuring the qualification and quality assurance of the work of academic personnel, which is also fully applicable to the Management study direction. A component of personnel policy is the Academic Personnel Management System (APMS). It not only includes AP selection and recruitment, but also AP work quality assurance, AP development and renewal of its composition. APVS work quality assurance entails annual AP evaluation, ongoing class peer assessment, regular analysis of feedback from students, the ongoing raising of AP qualifications and re-election of academic personnel every 6 years. The annual AP work quality evaluation system (WQAS) entails evaluation of AP every year in three main areas:

- scientific (creative)
- work;teaching work;
- organisational work.

evaluation of results and discussions of plans and tasks for the next period takes place during an annual interview with the immediate superior. Each area is evaluated in detail by the manager using quantitative criteria. Criteria can be updated and revised in accordance with the university's priorities. Individual criteria have heightened weight, e.g. the number of internationally cited publications in the area of research work, and in the teaching realm - results of student surveys regarding the quality of classes, etc. A detailed description of the annual WQAS is provided in Annex. AP evaluation also has a certain motivational effect, encouraging faculty members to attain the best results possible, because the result of the annual evaluation is linked to the AP remuneration system.

RISEBA APP stipulates that it is the duty of AP to raise their scientific and teaching qualifications on

an ongoing basis. Scientific qualifications are raised through the involvement of AP in independent studies and projects or contractual work. Raising of scientific (creative) qualifications is regularly planned and its deliverable is scientific publications or creative work, participation in conferences, management of research or artistic innovation projects and contractual work, and participation in exhibitions and creative competitions. RISEBA promotes and supports the raising of scientific (creative) qualifications by:

- materially stimulating high-level publications and creative work;
- paying for the participation of AP at academic conferences;
- paying for consultative services in the mathematical processing of results;
- paying for editing of research papers;
- providing support in the preparation of monographs and other printed work;
- awarding paid vacations to prepare dissertations, etc.

Improvement of teaching qualifications is also regularly planned and its outcomes include supervision of doctoral and Master’s papers, development of new study courses, preparation and publishing of textbooks and teaching means, participation in academic conferences, reading lectures in international universities, participation in methodological seminars and qualification top- up courses.

In order to encourage AP to raise their teaching qualifications, RISEBA:

- organises regular methodological seminars for academic personnel;
- pays for the participation of AP at academic conferences;
- pays for the participation of AP in qualification top-up courses in Latvia and abroad;
- organises and partly pays for AP taking foreign language courses and receiving international foreign language knowledge level certification;
- partly pays for courses for university lecturers in the programme “University Didactics: Contemporary Theories and Practice”;
- partly pays for the studies of AP in doctoral or Master’s programmes, etc.

AP is actively involved in qualification top courses organised by the university (see Table 3.5).

Table 3.5.

RISEBA organised methodological seminars during the reporting period.

| Academic year | Seminar subject | Seminar manager | No. of hours | No. of participants |
|---------------|--|---|--------------|---------------------|
| 2016/2017 | Best Practice in the Use of Distance Learning Materials | A. Bārzdaie | 2 | 22 |
| | Best Practice in the Use of Moodle | doc. J.Bierne | 2 | 13 |
| | Use of Contemporary Video-Technologies in Preparing Distance Learning Lectures | doc. L.Krēmers | 2 | 23 |
| | An Example of Best Practice in the Production of a Distance Learning Video Lecture - Max Planck Institute Video Lecture "Making Scientific Writing Painless" | Assoc. Prof. G.Lapiņa | 2 | 23 |
| | Methodology for Formulation and Assessment of Study Results | Doc. Sanita Baranova | 2 | 24 |
| | Quality Management of RISEBA Final Theses | Assoc. Prof. I. Brence and Assoc. Prof. I.Ludviga | 2 | 27 |

| | | | | |
|-----------|---|--|---|----|
| | Psychological and Ethical Aspects of the Assessment of Study Results | Prof. Lūcija Rutka | 2 | 36 |
| | Examples of Best Practice in Programme Management | Irēna Komarova, Dina Suhanova, Diāna Krone | 2 | 22 |
| 2017/2018 | Distance Learning Audit Results and Opportunities to Improve the Quality of Distance Learning | Prof. L. Rutka, Prof. I.Senņikova, Assoc. Prof. I.Kreituss, doc.I.Graurs, | 4 | 38 |
| | Didactic Principles and Teaching Methods in the Attainment of Study Results | I.Brence, A.Skvorcovs, T.Vasiljeva and D.Geitners | 4 | 38 |
| | New Options in the Use of Moodle in the Study Process | Prof. Tatjana Vasiljeva, Oksana Ušakova, Dmitrijs Geitners and Inese Slūka | 2 | 24 |
| | Study Course Mapping: Ranging from the Occupational Standard to Attainable Study Course Results | S. Dobrovojska, Prof. L.Rutka; Assoc. Prof. I.Ludviga | 2 | 37 |
| | Study Programme Mapping | RSU experience | 2 | 35 |
| | Contemporary Teaching Methods to Improve the Quality of the Study Process" | EKA Conference | | 11 |
| | Infographics and New PowerPoint Options in the Preparation of Lecture and Seminar Materials" | doc. L.Krēmers | 2 | 28 |
| | The Student-Centric Approach to Education: its Essence and a Neurocognitive Insight" | Prof. L.Rutka; K.Užule | 2 | 20 |
| | How to Write a Good "CASE STUDY" | Prof. T. Vasiljeva, doc. A.Strejčonoka | 2 | 31 |
| | Basic Elements of Personal Data Protection. | I.Aleksejenkova | 2 | 32 |
| | Quality of Final Theses | Prof. L .Rutka, Assoc. Prof. I.Kreituss, programme directors | 2 | 27 |
| 2018/2019 | GDPR - Data Protection Regulation (GDPR) – Are We Ready? | Ilana, Einmane, State SIA Latvijas Televīzija IT Department Head | 2 | 24 |
| | Application of Quantitative and Qualitative Study Methods in Students' Studies. | Professor Anita Pipare, Professor Iveta Ludviga | 8 | 52 |
| | Five IT Trends that will Change the World in 2018 | Kristaps Banga, Head of Innovations for Accenture in Latvia | 2 | 43 |
| | "An Insight into Open Science. Use of Web of Science and Scopus Databases in Studies and Research Work" | Gita Rozenberga, LU Library Senior Librarian | 2 | 11 |
| | Computer Game Development Trends in Latvia and Globally | Elviss Strazdiņš, Latvian Game Developers' Association | 2 | 12 |
| | How will Big Data Change the Way how we Work and Entertain Ourselves? | Aldis Ērglis, Emergn Latvija | 2 | 17 |
| | Contemporary Financial Calculators, their Use, Advantages and Shortcomings | Sigita Misiņa, IT architect | 2 | 8 |
| | Learning from Existential Experience for Quality of Life | Docent Mārtiņš Veide, | 2 | 18 |
| | "Game or Lose! How are Gaming Elements Entering Contemporary Business?" | Juris Zalāns, "Benefits Latvia" | 2 | 12 |

| | | | | |
|-----------------------------|--|---|---|----|
| | Best Practice in Data-Based Decision in Relation to Business Intelligence (BI) Systems | Aldis Ērglis, Machine Learning Lab led | 2 | 10 |
| | Use of Technology to Increase Productivity | K.Skutelis, Head of Public Relations, | 2 | 14 |
| | Psychological Idiosyncrasies of Adult Learning | Practising Psychologists and Psychotherapist A.Vagale | 2 | 14 |
| In the study year 2019/2020 | Interactive methods of using MOODLE | Mg. sc. edu, mg. paed., Kaspars Kiris RISEBA | 2 | |
| | Intercultural communication and differences of different cultures at RISEBA | Mg. pol.sc., bc,phil. Vineta Kantāne | 2 | |
| In the study year 2020/2021 | <p>"Modern digital technologies"</p> <ul style="list-style-type: none"> - Lecture on Technology Vision trends - Master class of design thinking - Modern presentation. Visualisation of information - New edition of typical load norms <p>Work with the new information systems of RISEBA – UNIMETIS, e-riseba.lv</p> | Ksenija Puriņa, Dana Žvirīņa, Accenture, Zane Raščevska, RISEBA Head of Creative Business Incubator, Nadežda Rika, RISEBA, Head of Study Department | 8 | |
| | "Registration of ZOOM attendance of students and entry theof the information on attendance into UNIMETIS" | Ivars Javaitis, Head of Study Quality Centre | 2 | 28 |
| | ON the minimum requirements for the development of study courses in the MOODLE environment (eRISEBA) PLK, NLK and remote studies at RISEBA University of Applied Sciences. | | 2 | 39 |
| | "Online tools in the study process: Diverse options of theMIRO" | Ivars Javaitis, Head of Study Quality Centre | 2 | |
| | "High quality work in MOODLE environment" | Ivars Javaitis, Head of the Study Quality Centre | 2 | |

Faculty members and visiting faculty members take part in qualification top-up courses or methodological seminars organised by the university.

Procedures for organising methodological seminars:

1. Seminars are organised once a month for 2 academic hours during the first and second semester. Annually, this amounts to 16 academic hours. Since the autumn of 2018, seminars are organised so that one seminar is conducted every month, and during the second semester – over the course of one eight hour day. No classes are planned for that day and faculty members have the opportunity to spend the whole day learning and sharing experience.
2. Depending on the procedures for organising seminars, their participants receive RISEBA University certificates to complete 8 or 16 hours of specific subjects.
3. Methodological seminar subjects are planned depending on current developments in the highest education in Latvia and globally, as well as depending on the latest developments in RISEBA University's study process. The following can be provided as examples: The 2017/2018 seminar subjects were related to the assessment of study results, formulation of expected study results and formation of study mapping. In 2018/2019, there was a focus on mastery of innovating teaching methods and digitalisation, while 2019/2020 will be dedicated to mastery of the subjects of intercultural communication and diversity.
4. A compulsory requirement for faculty members is to attend at least 50% of methodological seminars for which they receive at least one additional point during the faculty member's annual performance evaluation.
5. Attendance of RISEBA University seminars can be substituted with foreign courses, seminars and any professional activity, presenting the corresponding document.

All lecturers within the framework of the ERASMUS+ programme are able to visit other universities abroad, conduct lectures, visit sessions conducted by foreign lecturers, study new methods and share experiences.

3.3.5. Provide information on the number of the teaching staff members involved in the implementation of the relevant study programmes of the study field, as well as the analysis and assessment of the academic, administrative (if applicable) and research workload.

The records of the working hours of faculty members in the Architecture and construction study direction study programme are drawn up, in accordance with Section 4, Paragraph three, Clause 4 and Section 5, Paragraph two (prim), Clause 2 of the Law on Higher Education Institutions, other binding external laws and regulations and the Academic Personnel Standard Workload Rules approved by the RISEBA University Senate.

The academic workload of the faculty member involved in the implementation of study programmes corresponding to the study direction is comprised of:

- conducting classes,
- overseeing internships,
- accepting tests,
- consultations, correcting course work,
-

- overseeing study papers,
- overseeing Bachelor's and Master's theses,
- reviewing Bachelor's and Master's theses,
- work on study thesis and internship presentation commissions,
- work in State examination commissions.

The workload of the university's faculty members is planned and recorded, in accordance with the principle – of remuneration for work specifically done. Specific remuneration is provided for each of the faculty member workload types listed previously, in conformity with the Academic Personnel Standard Workload Rules approved by the RISEBA University Senate.

The workload of faculty members during the academic year is planned in accordance with the study programme plan. Workload fulfilment is overseen by the Study section, comparing the planned workload of the faculty member with work actually done at the end of the reporting period.

In drawing up, recording and overseeing the academic workload of faculty members, meaning elected academic personnel and visiting faculty, uniform principles are observed, as far as possible giving precedence to domestic academic personnel in drawing up the workload.

A similar principle to that for planning and recording teaching workloads is used for research work done by academic personnel. It is recommended in the scientific work of faculty members to prepare at least one to three scientific articles during the time period of three years, which are published on databases SCOPUS or Web of Science (faculty members should participate in at least one international research project in three years, as well as prepare at least one to three internationally cited research papers, every year – participation of at least one student at the RISEBA International Scientific and Artistic Creativity Conference). The research workload of elected academic personnel during the academic year is recorded and remunerated, in conformity with the results of research work actually attained. Payment for the scientific work performed by the faculty members is governed by the "Regulation On the Provisions of Participation of the Academic Staff in International Scientific Research Conferences, Art Symposiums, Exhibitions and Audio Visual Work Festivals", approved by the RISEBA Senate, and it determined the payment for the participation of faculty members in the promotional activities of the scientific work, in accordance with the limit determined for each category of the academic position. While, pursuant to the order of the Rector of 20 October 2014, which provides approved payment of copyright for each scientific publication, which is published on the electronic database Thomson&Reuters, SCOPUS, ELSEVIER, ERIH, and for each scientific publication, which is published in scientific magazines of the class A or B.

Summarising the aforementioned information, one can say that the workload of visiting professors at the university is comprised of their planned academic workload, whereas the workload of academic personnel is made up of their planned academic workload and research workload.

The quality assessment of academic personnel is performed by means of regular student surveys and systematic mutual assessment of academic personnel or shadowing, the procedures for which are provided by Academic Personnel shadowing procedures. These assessments are also taken into consideration in the annual evaluation of lecturers.

To ensure the use of modern, interactive learning methods in the study work, the higher educational institution regularly organises seminars, training sessions, as well as methodological seminars, which are held once per month, paying special attention to innovative learning methods.

To ensure the improvement of lecturer qualifications, in addition to annual evaluation, the election of lecturers for academic positions is organised in accordance with the requirements of regulatory enactments. The lecturers are elected to academic positions for six years. Elections significantly

motivate academic personnel to maintain high operation results. Meanwhile, for the management of the university, it is an opportunity to perform quality assessments, improvement and renewal academic personnel quality by opening new development perspectives.

The implementation of the study programmes of architecture and design direction is supervised by the RISEBA Department of Architecture and Design, but lecturers from other departments – the Department of Economics and Finance and the Department of Languages participate in the implementation of programme content.

59 lecturers are involved in the implementation of Architecture and Construction direction, among whom:

- 13 lecturers are academic staff of RISEBA;
- 46 are guest lecturers.

Out of 13 academic staff members, 11 people hold doctoral degrees, which amounts to 84,62 % of the elected lecturers. 9 of the adjunct staff members have doctoral degrees as well. Several representatives of academic personnel and guest lecturers lecture on both programmes of Architecture and Construction, thus promoting the mutual harmonisation and continuity of studies.

The lecturers with doctoral scientific degree and publications, as well as practical experience in the sector, are primarily attracted for work on study programmes. Businessmen, representatives of professional associations, university alumni with domestic and international professional experience are invited as guest lecturers to RISEBA. The students have evaluated the experience, knowledge and competence of the lecturers as one of the most important advantages of the study programmes of Architecture and Construction study direction.

Table 3.4.

Lecturers involved in the Architecture and Construction Study Direction

| | |
|----------------------|---|
| Leading researchers | 3 |
| Researchers | 1 |
| Associate professors | 3 |
| Lecturers | 3 |
| Adjunct lecturers | 46, including 9 lecturers with doctoral scientific degree |

All lecturers comply with the requirements of the regulatory enactments of the Republic of Latvia and, prior to the commencement of cooperation with lecturers, the work conditions and rules of internal conduct of RISEBA are discussed. If the lecturer lectures on the study course for the first time, an open lecture, which is shadowed by programme administration and/or leading lecturers of the programme, is a mandatory requirement.

Academic staff members with a scientific doctoral grade shall be given a priority to lecture on study courses; therefore, these staff members ensure most study courses. Meanwhile, sectoral practitioners involved in the implementation of the programme, who help students acquire the practical skills and knowledge associated directly with the selection of the profession, are involved in lecturing on specific courses, for instance: Modern technologies for architects, etc.

Within the study field, the teaching staff works in professional activities in three directions: scientific research, pedagogical and organisational. The research activities of the teaching staff provide feedback for the transfer of knowledge from the field of scientific research to the pedagogical and organisational field, thus increasing the quality of studies. The science

development policy of the university envisages that the research work of the teaching staff is included in the annual evaluation of the teaching staff of the university, where each member of the teaching staff is evaluated taking into account all three directions of professional activity. One of the lecturers involved in the study direction is the expert of the Latvian Council of Science (Doc. Dr.sc. ing. Ģirts Frolovs, Engineering sciences and technologies – Building and Transport Engineering).

The involvement of faculty members in scientific research is one of the priorities for study direction and RISEBA University. At the end of each academic year, the annual performance evaluation of the academic staff and research fellows are conducted. In this evaluation, scientific, research, academic and organisational activities carry a specific pre-defined weight. If the head of the direction has performed well, he/she can receive additional points during the annual performance assessment. Currently, the weight of scientific activities is 0.35 or 35 % of the total score.

If, during the last two academic years a faculty member has participated in a lecture and/or research paper in two international scientific, research or academic conferences in Latvia, Estonia or Lithuania, and at least one of these conferences is the annual international scientific conference organised by RISEBA together with the BA School of Business and Finance, he/she may be eligible to RISEBA financing to cover all participation costs in an international conference.

According to the "Regulation on Conditions for Publication of Research Results of Academic Staff" approved by the Senate of RISEBA, RISEBA faculty members may be eligible for financial support (royalties), if the respective research paper has been included in a collection of conference proceedings, which is indexed in the scientific databases Web of Science, SCOPUS, ERIH or ELSEVIER.

In the event, that a lecturer submits their scientific article for publication in scientific journals issued by RISEBA "Journal of Business Management" or Journal ADAM Arts (Architecture. Design and Audiovisual Media Arts), the author shall be provided with the proof-reading of their article text in English.

To attract and retain high-level representatives of academic personnel, RISEBA follows sectoral trends by ensuring competitive work remuneration and social guarantees for lecturers, as well as the options for upgrading of their qualifications.

By continuing the expansion of the Architecture and Construction study direction, the work of the new Master's programme with a specialisation in landscape architecture is in progress, and professionals of the sector are being attracted, prioritising doctoral degrees and practical experience.

3.3.6. Assessment of the support available for the students, including the support provided during the study process, as well as career and psychological support by specifying the support to be provided to specific student groups (for instance, students from abroad, part-time students, distance-learning students, students with special needs, etc.).

Support during the learning process is also provided by the administrative personnel (programme directors, administrators of academic programmes, customer service centre staff) and faculty (teachers, curators). In addition, a group leader is appointed for each group of students, who is responsible for distributing important information among his/her peers, team building, etc.

As an example, one can mention the types of support that students receive from a curator:

- help students organising group bonding and out of school events;
- help in resolving problematic issues between the students and the university (programme director, study administrators, bookkeeping department, loan specialist, etc.);
- meeting the group on a regular basis, providing psychological support, suggesting solutions (for resolution of private matters and conflicts between students, etc.);
- informing students about various university events and encouraging them to participate in them;
- etc.

During the academic process, career and psychological support are also considered very important.

During the implementation of the Architecture and Construction direction of studies, a close link with employers in the sector of architecture is maintained to ensure that the students receive support in finding internship sites and employment. The teaching staff of the architecture programme represent leading Latvian and foreign architecture offices – “Arhis”, “Sarma&Norde”, “DJ arhitekti”, etc. Thus it is not only possible to provide internships for the students, but also to establish closer cooperation in the development of the students’ skills. The potential employers are involved as the teaching staff of the programme (Ints Menģelis, Didzis Jaunzems, Andris Kronbergs, etc.). Practising architects are invited to participate in the review and juries of the semester projects of Architecture Department students or as supervisors and reviewers of Bachelor’s or Master’s Theses.

To help students with securing internships and jobs, RISEBA has a special structural unit: Career Development Centre. All students who wish to find a place of internship or employment can approach the centre and receive not only suitable offers but also advice about writing good CVs and application letters, as well as the most important aspects of job interviews.

In order to provide support to student career development, RISEBA has created an annual event cycle [RISEBA Career Days](#). Guest lectures, master classes, seminars and RISEBA Career Day are organised within the framework of Career Days, aiming at the invitation of company representatives, professionals of the sector and experts for closer cooperation. The students are supported by:

- organisation of internships,
- informative materials on the promotion of career and individual growth,
- excursions to companies,
- guest lectures and other theme events,
- topical offers of work and internship vacancies,
- individual consultations on career opportunities and drafting of documents,
- RISEBA Career Day.

Students that wish to start a business can develop their business ideas at RISEBA Creative Business Incubator.

RISEBA University of Applied Sciences provides psychological support to students as well. Students can often face situations that they find difficult to cope with, especially during the last two years under the conditions of COVID restrictions. The support group consists of the employees of RISEBA, lecturers, alumni and supervision students. More information on psychological support for students can be found [here](#).

The Bachelor’s and Master’s study programmes in the Management study direction include not only various psychology courses but also study courses in the field of personal development (Development of Personal and Learning Skills, Personal Development: Leadership and Critical

Thinking, Personal Development and Team Spirit). During these courses, students acquire basic academic research skills, enhance their cooperation skills, learn to perform self-evaluation, identify their needs and necessary solutions to ensure their personal development in the job market.

At the bachelor's level, for one week students are informed about the learning process, the university and its environment, and they have team building events and guest lectures.

At the master's level, there is one introductory evening for all postgraduate students during which general information is provided about the university, and student teambuilding is promoted (by means of the Business meets art... concept). Students of specific programmes have one additional evening, during which they are given detailed information about the requirements of the programme.

One noteworthy and truly inspiring annual event offering support to students is RISEBA University's Christmas ball, which students attend together with faculty members and the university's cooperation partners, including internship providers. It is organised by the Student Council, with the involvement of students, faculty members and employees. Event videos and photographs are posted (with permission from students) on the RISEBA University homepage and social media. This nurtures cooperation between students and faculty members, positive emotions and the university's profile.

2.4. Scientific Research and Artistic Creation

2.4.1. Description and assessment of the fields of scientific research and/or artistic creation in the study field, their compliance with the aims of the higher education institution/ college and the study field, and the development level of scientific research and artistic creation (provide a separate description of the role of the doctoral study programmes, if applicable).

The direction of architecture and construction is implemented at the Faculty of Architecture and Design of RISEBA University of Business, Arts and Technologies, Department of Architecture. The department implements 2 study programs - the academic bachelor's study program "Architecture" and the professional master's study program "Architecture".

Currently, in the architecture and construction direction, there are 53 faculty members, of which 16 have a PhD degree. The number of teaching staff has slightly increased during the reporting period. Seven foreign lecturers are also involved in the teaching staff of the field of architecture and construction (*R. Bekic, S. Brorson, R. Cordova, E. Duyan, H. Berret, J. D. Postel, G. MacDonald*).

Since 2019, 2 lecturers, two assistant professors, one researcher have been elected, as well as one assistant professor, one lecturer, and one leading researcher have been re-elected. In total, the number of leading positions in the Faculty of Architecture and Design has increased by seven positions (see Appendix for elected lecturers).

The academic staff of RISEBA also actively cooperates with the Latvian Academy of Sciences; three faculty members (*I. Senņikova, T. Vasiljeva and I. Brence*) are experts of the State Scientific Qualification Commission. Eight lecturers of RISEBA were granted LZP expert rights in several fields of science, including the lecturer of Architecture and Construction *Dr.sc. ing. G. Frolovs*.

According to the mission and vision of RISEBA, the long-term objective of scientific development is

to enable scientific excellence in all research directions respecting the principles of academic integrity and ethics and deliver meaningful research outputs for the academic environment, the public and policymakers to contribute to the development of Latvia.

The scientific research strategy of the architecture and construction direction is derived from the general Scientific Development Strategy of RISEBA. The Scientific Development Strategy was prepared under the following laws and planning documents of the Republic of Latvia and the European Union:

- Law on Higher Education
- Institutions Law on Scientific Activities
- Sustainable Development Strategy of Latvia (Latvia 2030)
- European Commission strategy Europe 2020: A European Strategy for Smart, Sustainable and Inclusive Growth
- Strategy of the University of Applied Sciences RISEBA for 2018-2020
- Cabinet Regulation No. 322 'Classification of higher education institutions in Latvia' (13/06/2017) describes knowledge, skills and competencies that are in line with the NQF, and educational programmes that are in line with the NQF/EQF levels
- Eligibility Procedures and Accreditation Standards for Business Accreditation;
- CEEMAN Manifesto Changing the Course of Management Development: Combining Excellence with Relevance.

The main tasks of the development strategy of the study field are improvement of architecture study programs and development of interdisciplinarity by market requirements, creative approach, improvement of professional and pedagogical qualification of the academic staff, ensuring personal, academic and professional growth of students.

The research activities of academic staff are planned in accordance with the goals of the RISEBA. The research interests of the academic staff are mainly related to the study courses they teach. Research groups have been set up at the university's departmental level with the involvement of students. Academic staff, both individually and together with students, participate in research projects, carry out research work, present the results at international conferences and prepare publications.

In the framework of their research fields, academic staff in their professional activities shall operate in three areas: research, pedagogy and organisation. The research work of the academic staff provides for the transfer of knowledge from research to pedagogy and organization, thus increasing the quality of studies. The university's research development policy envisages that the research work of the academic staff is included in their annual evaluation, where each lecturer is evaluated taking into account all three areas of professional activity.

The remuneration of the lecturer depends on the results of the evaluation, i.e. the income of the lecturer's research work is included in the rate for one academic hour. In addition, RISEBA's science development policy provides for the payment of a premium for scientific publications if the publication is published in international databases (eg Thomson Reuters Web of Knowledge, Scopus, Elsevier, Erix, Class A and B scientific journals). Such a system promotes the motivation of teachers to write publications and raises their qualification level, also increasing the quality and academic depth of the content of lessons. RISEBA's science development policy stipulates that the university pays for all expenses related to the participation of lecturers in scientific conferences and seminars both in Latvia and abroad, provided that the lecturer's participation in a foreign conference will ensure the publication of a scientific publication in one of the international databases or

journals.

The main research areas of the Faculty of Architecture and Design are the consolidation of architecture and engineering and the impact of environmental disciplines on the development of architecture in the context of a paradigm shift in resource-saving and sustainability.

The activities of the Faculty of Architecture and design conform with the objectives set out in the National Development Plan concerning Latvia's growing economy and creativity and entrepreneurial activity, which have also flourished beyond Riga. The activities of the RISEBA Architecture and design faculty promote cross-border cooperation between different countries, including outside the EU, in culture and education as well as economics and environmental protection. Investment in research specifically succeeded in attracting human resources; developing innovative ideas; improving research infrastructure and cooperation in higher education, science and the private sector; and transferring research and innovations to the business.

The results of RISEBA Architecture and design faculty and researchers' scientific activities contribute to the development of Latvian society, including its economy and culture. Joint collaborative work with foreign partners positively affects the development of the EU and the well-being of its citizens. Graduates of Architecture and design faculty implement the results of their research in Latvian private sector institutions and companies as well as international organizations.

Architecture and design faculty observes industry requirements and the latest trends and, by studying the labour market requirements, offers new study programs for high-level professionals, thus supporting industries with qualified graduates with research skills.

Architecture and design faculty and researchers carry out consultations and expert reports and lend their help in the development and adoption of research commissions for various organizations (business) and fundamental research. The architecture and design faculty cooperates with professional associations that fit into its research fields.

The scientific activity of the RISEBA teaching staff is financed both from the university's income and by attracting funds from various funds in the form of projects. In general, the university allocates 4-6% of the university budget for scientific activities, depending on the amount of funding attracted to projects in the respective year. RISEBA University continues to develop its research support infrastructure, Nvivo software licenses have been purchased and installed to ensure high-quality interview data processing. A group of statistical experts was organized to support teachers in using statistical methods for quantitative data. From issue 11, proofreading will be provided for articles in the Journal of Business Management.

RISEBA Faculty of Architecture and Design is relatively new - the academic bachelor's study program "Architecture" has been operating for ten years, but the professional master's study program "Architecture" for only three years. In 2019, the graduation program of the master's study took place. Still, in 2020, a scientific research group in the field of Architecture and Construction was established, headed by the lecturer Dr Efe Duyan (TR).

In 2020, an international evaluation of the activities of scientific institutions of the Ministry of Education and Science and Technopolis Group Eesti was carried out, the aim of which is to improve the quality of scientific institutions, increase international competitiveness, better integrate into the European Research Area and increase national competitiveness. Implementation of technological development and innovation policy in the country.

This assessment was made to understand the level of the Faculty of Architecture and Design on the way to the development of science within the direction. The total number of points awarded was 1,

which indicates a low level of research performance at the RISEBA Art and Technology Research Institution.

The evaluation resulted in several expert recommendations for the next six years for the Faculty of Architecture and Design:

- Active management of the development of the research environment at the institutional level.
- Plans for doctoral studies in Architecture and design faculty should be outlined and pursued.
- The strategic RISEBA vision should be developed into a specific scientific institution of arts and technologies goals, tasks, milestones, identification of specific resources matched with funding allocation. A responsible person on the ground within the institution needs to be appointed to oversee and facilitate the everyday running of the research platform—not with their specific research interests in mind, but to create a shared, meaningfully integrated research environment.
- Practice-led/artistic research-based submissions should be in place for Architecture and design faculty. Form a peer-review community to establish what constitutes a practice-based submission and involve external experts to advise on what comprises high-quality submissions, etc.

2.4.2. The relation between scientific research and/or artistic creation and the study process, including the description and assessment of the use of the outcomes in the study process.

The list of research topics of the study field and its supervisors and participants is approved for two study years. The current one was reviewed and updated at the beginning of 2018 at the meeting of the RISEBA Scientific Council.

Research topics and leaders in the field of Architecture and Construction:

1. Docents, Dr. arch. Ilze Paklone: Urban Architecture and Urban Regeneration
2. Leading researcher Dr. arch. Jānis Lejnieks and lecturer Dr. arch. h.c. Jānis Dripe: Environmental Development of Liepāja City, 1918-2018.

The unifying research direction developed in the study field "Architecture and Construction" is Urban design with the analysis of individual objects, urban design or technological processes created within it. Within the study field, the academic staff works in two directions in their professional activities: scientific research and architectural design and artistic creation. The research activities of the academic staff provide feedback for the transfer of knowledge from the field of scientific research to creativity and vice versa.

RISEBA faculty has extensive experience in involving young scientists (bachelor, master and doctoral students) in scientific work, conducting research within projects, conducting individual research within the course, bachelor's and master's thesis, preparing scientific articles, presenting research results at scientific conferences and business forums.

The study process envisages a comprehensive approach, supporting the research projects initiated by the students and involving the most successful students in architectural design and artistic creation projects. The research and creative process are mainly based on a specific creative

personality; therefore, it is very important to create and develop the creative potential and independent thinking of young specialists, the ability to strategically and analytically formulate and communicate professional aspects, as well as improve their professional qualifications. Within the framework of studies and research practice, students are allowed to get acquainted in practice with companies working in the field of architecture, practising architects, separate projects and structures both in Latvia and abroad.

Jānis Lejnieks, the leading researcher of the RISEBA Architecture and Design Department, is the editor-in-chief of the only professional Latvian architecture magazine, "Latvijas arhitektūra". The teachers of the architecture program (Ilze Paklone, Rudolfs Dainis Šmits, Dina Suhanova, Jānis Dripe) regularly publish articles in the professional press, are the authors of books and catalogues, as well as curators of exhibition projects.

During the reporting period, work was also done on preparing the second issue of the academic journal ADAMarts. ADAMart, an English-language journal with double/anonymous peer-reviewed research articles with an international editorial board, is dedicated to the art of architecture and media in the Baltic Sea region. Academic papers, 32 postgraduate students, architects, designers, designers, media artists, anthropologists, historians, psychologists, sociologists and others with a specific interest in architecture and interior design were invited to submit scientific articles, theoretical and practical research, reviews and other applications. , urban planning and audiovisual media arts. The first edition of ADAMart was released in August 2018. Editor-in-Chief: Jānis Lejnieks, Dr Arch., Assoc. Professor and leading researcher, RISEBA University, editor: Dina Suhanova, Mg. Art., Lecturer, RISEBA University.

The yearbook of bachelor's and master's thesis projects is published every year, creating the graduates of the bachelor's and master's programs themselves to participate.

RISEBA annually organizes the International Student Research and Artistic Creativity Conference, The Changing World: In Search of New Solutions. At the conference, the Faculty of Architecture and Design and the Faculty of Media and Communication regularly present three sections: Business Psychology and Human Resource Management, Advertising Yesterday, Today, tomorrow, led by the Advertising and Public Relations Department, and Innovative Solutions in Audiovisual and Media Organized by Audiovisual Media art department.

In 2019, an international conference, "Migration Architecture", organized by the Latvian Association of Architects, took place on the premises of RISEBA University College, co-curated by Dina Suhanova, a lecturer at the Faculty of Architecture and Design and program director.

Every year RISEBA organizes the annual international Baltic Business Management Conference ASBBMC. For example, in 2017, the conference was entitled "Sustainable Organizations: Creating and Managing in a Fragile Business Environment". Within the framework of the conference, the cycle of three open lectures SLICE of ARCHITECTURE took place at the Department of Architecture and Design as a parallel session:

- Architect and guest lecturer Dirk Jan Postel (NL), "Enhancing Ambition: Our Design Book from Cradle to Cradle".
- 3rd-year students and associate professor Ilze Paklone, "University Campuses".
- Architect and guest lecturer Bart Melort (BE), "Sustainable Business".

FAD students need to take the opportunity in the spring semester of each study year to go on study research practice to countries where interesting architectural processes take place; during the reporting period, it included Finland, Spain, the Netherlands, Denmark, Sweden and Italy. Students have been to European cities such as Brussels, Stockholm, Copenhagen, Barcelona, Rotterdam,

Berlin, Milan, Venice, Helsinki and Valencia.

In 2019, an international conference, "Migration Architecture", organized by the Latvian Association of Architects, took place on the premises of RISEBA University College, co-curated by Dina Suhanova, a lecturer at the Faculty of Architecture and Design and program director.

2.4.3. Description and assessment of the international cooperation in the field of scientific research and/or artistic creation by specifying any joint projects, researches, etc. Specify those study programmes, which benefit from this cooperation. Specify the future plans for the development of international cooperation in the field of scientific research and/or artistic creation.

Since 2013, RISEBA has been actively involved in the Projects Department. One of its tasks is to inform RISEBA's academic and administrative staff and students about project opportunities, including research projects. The project department operates in the following areas: education (lifelong learning, higher education, vocational education, distance learning, etc.), science and research, business development and start-up, transnational cooperation, youth (scholarships, mobility, training), culture (art, music, architecture, film industry, etc.), social (employment, social environment, equality, equality, charity, anti-discrimination / anti-violence, social integration, etc.).

One of the examples of international practice is the Interreg Central Baltic Program 2014-2020. The project "Visionary and participatory development planning and integrated urban management for sustainable cities", was attended by both bachelor's and master's students. More detailed information about the project can be found in the description of the professional master's study program in Appendix 13. In 2018, students worked on the Knowledge Mile project, which explored the future of academia, using global, regional and local case studies on education, research and innovation. More information about the project can be found in the description of the academic bachelor's study program in section 3.2.6.

2.4.4. Specify the way how the higher education institution/ college promotes the involvement of the teaching staff in scientific research and/or artistic creation. Provide the description and assessment of the activities carried out by the academic staff in the field of scientific research and/or artistic creation relevant to the study field by providing examples.

Research activities at RISEBA are managed and coordinated by RISEBA Scientific Committee. This committee consists of the RISEBA Rector, Vice-Rector for Studies, and the permanent academic staff, i.e. professors, deans of faculties, heads of departments and lead researchers. The Vice-Rector for Research is in charge of the RISEBA Scientific Committee. The Scientific Committee draws up scientific and research plans for RISEBA faculties monitors their implementation with regards to the set scientific goals and objectives and develops proposals for improvement of research outputs. A list of research topics, their supervisors and participants (for a specific research direction) are approved for two academic years, the current one having been reviewed and approved during a meeting of the RISEBA Scientific Committee at the beginning of 2018.

To achieve scientific excellence, it has been decided that by the end of the period, namely by 2025, at least 75% of the academic staff at the Faculty of Architecture and design (as well as the entire university) should have a scientific degree. 32% of lecturers at the Faculty of Architecture and Design have a doctoral degree, and 8% have a doctoral candidate, which makes up 40%. The faculty are actively working to attract as many lecturers as possible with a scientific degree and meet the university's requirement for the proportion of the university's scientific staff.

To improve the qualification of the scientific staff at least twice a year, the academic staff of the Department of Architecture and Construction must participate in the seminars organized by RISEBA. Supervisors of doctoral theses should participate in seminars during which foreign scientists, researchers and leading personnel of Latvian scientific institutions (the Latvian Academy of Sciences, the National Commission for Scientific Qualifications, etc.) give their presentations. Participation fees of the faculty in international seminars are also covered; for example, in 2019, faculty members attended the 9th EDAMBA-EIASM Consortium Winter School on Doctoral Supervision and the New Global Research Landscape).

The Faculty of Architecture and Design and the entire University have established uniform principles in the organization of scientific activities. The Scientific Council of the University reviews and approves the research directions carried out by the academic staff and researchers once in two years according to the work plan submitted by the head of the research direction.

In the long-term, the university intends to continue and improve its experience in supervision and management of research directions. A member of the academic staff or a researcher who meets RISEBA criteria ahead of a scientific and research direction is appointed and approved during a meeting of the Scientific Committee. The head prepares an action plan for a research team and submits it to RISEBA Scientific Committee for approval. Researchers, academic staff and students working in each of these areas and engaged in research activities inform the head of the respective area about their results. The head of the director informs the Scientific Committee about the achieved results once per year (at the end of the academic year).

Heads of departments of the Faculty of Business and Economics and its dean perform the annual performance evaluation of the academic staff and research fellows. In this evaluation, scientific, research, academic and organisational activities carry a specific pre-defined weight. If the head of the scientific direction has performed well, he/she can receive additional points during the annual performance evaluation. Currently, the weight of scientific activities is 0.35 or 35% of the total score. In the long term, it is planned to increase the weight of this criterion.

We promote the active engagement of our academic staff in research by fully covering costs for their participation in international scientific conferences and by offering financial incentives for specific scientific achievements.

The university actively supports the participation of its academic staff and research fellows in international scientific and academic conferences, art symposia, exhibitions, competitions and audiovisual festivals in Latvia and abroad under the "Regulations on Conditions for Participation of Academic Staff in International Scientific and Academic Conferences, Arts Symposia, Exhibitions and Audiovisual Festivals" approved by the Senate. For this purpose, each department receives financing (from the budget of the university) at the beginning of each academic year for scientific, research and artistic creation, the head of the department is responsible for reasonable use of these funds.

If during the last two academic years a member of the faculty has presented a report and/or a scientific publication in two international scientific, research or academic conferences in Latvia,

Estonia or Lithuania, and at least one of these conferences is the annual international scientific conference organised by RISEBA together with the BA School of Business and Finance, or if during the last two academic years, considering the area of his/her research, a member of the faculty has participated in an international art symposium, exhibition, competition or an audiovisual festival, he/she may be eligible to RISEBA financing to cover all participation costs for an international conference.

When a possibility to offer financial support is considered for a member of the faculty to participate in a competition or a conference, the involvement of students by the respective member of the faculty in scientific activity is also taken into account, namely, if at least one student, who was scientifically or artistically supervised by this member of the academic staff has participated in the last RISEBA scientific conference for students.

The financing allocated to the department is divided depending on its scientific and research priorities. Besides, each member of the academic staff may also be eligible for paid participation in a competition or a conference (depending on his/her annual limit set according to the academic position: lecturer, docent, Associate Professor, Professor).

Most important research and innovation and collaboration projects:

1. Ģ.Frolovs; Invention and Innovation Exhibition MINOX 2016, Ģirts Frolovs, 1st place for the invention "Multi-layered ribbed construction material with adjustable specific load-bearing capacity"
2. Paklone: Project "Measuring the Non-Measurable". Japan, Tokyo, Keio University, Faculty of Science and Technology, Department of Systems Design Engineering, "CO+LABO" Architecture and Urban Design Laboratory, Prof. Darko Radović. Jan. 2012 – Oct. 2015

Most important publications by academic personnel and researchers:

1. Frolovs, G.; Rocens, K; Sliseris, J. 2017. "Optimal design of plates with cell type hollow-core" IOP Conference Series: Materials Science and Engineering, 251 (1) doi:10.1088/1757-899X/251/1/012075
2. Frolovs, G.; Rocens, K; Sliseris, J. "Shear and tensile strength of narrow glued joint depending on the grain direction of plywood plies" Procedia Engineering Vol. 172, (2017), pp. 292-299 ISSN: 1877-7058 doi:10.1016/j.proeng.2017.02.117
3. Jākobsone J. Iedzīvotāju un pārvaldes iesaiste Kuldīgas vēsturiskās pilsētvides apdzīvosnā un kopsnā: Latvijas Zinātņu Akadēmijas Vēstis, A daļa, 2017, No. 2, Latvijas zinātņu akadēmija, pp. 37-59.
4. Paklone, I., A. Balboa, R. A., Dérive in Singapore: Chinatown/Geylang/Little India/Tampines/Tiong Bahru. In: *Measuring the Non-Measurable 07: Subjectivities in Investigation of the Urban. The Scream, the Shadow and the Mirror*. Radović, ed., Tokyo: IKI (International Keio Institute) & Flick Studio Co. Ltd., 2014, pp. 82-113.
5. Dripe, Jānis. Gunnar Birkerts, National Library of Latvia, Riga. Stuttgart; London: Edition Axel Menges, 2015. 60 p. ISBN 9783932565700.
6. Lejnīeks, Jānis. Divkārsais kūlenis. Juris Monvīds Skalbergs. Modernisms – Postmodernisms, Riga: Pētergailis, 2018, 152 p., ISBN 978-9984-33-461-5

For a list of publications, patents, artistic creation works and awards of the teaching staff in architecture and construction for the reporting period, see In Annex 14.

2.4.5. Specify how the involvement of the students in scientific research and/ or applied

research and/or artistic creation activities is promoted. Provide the assessment and description of the involvement of the students of all-level study programmes in the relevant study field in scientific research and/ or applied research and/or artistic creation activities by giving examples of the opportunities offered to and used by the students.

As indicated in section 4.2, students are involved in research mainly in the framework of their final theses (bachelor's and master's theses) and course papers. Both undergraduate and postgraduate study courses include research methodology and data processing courses.

At the beginning of both undergraduate and postgraduate studies, students are made aware of the importance of research skills in career development, as well as of the opportunity to pursue doctoral studies. If students are not sure about the choice of the topic, they are offered several options, since companies and institutions often cooperate with RISEBA, offering to study topics that are relevant to the industry.

In each programme, topics of the final theses are grouped into several thematic groups depending on the needs of the labour market and recent development in the European and global research and scientific environment.

Involvement of students in scientific and research activities takes place depending on the level of their studies (undergraduate, master's), expected learning outcomes and requirements of EQF (European Qualifications Framework) and NQF (National Qualifications Framework), as well as the mapping structure of expected learning outcomes and content of studies. The bachelor's and master's theses are discussed in more detail in the description of bachelor's and master's study programs.

Students are encouraged to participate in scientific conferences to share their research findings.

RISEBA holds an international conference of scientific and artistic works every spring, "Changing World - in Search of New Solutions". The conference is financially supported by the companies that award the money to the winners of the first prizes.

Summarizing the involvement of students in scientific research at each level of the study programme, the following can be concluded:

1. Students of bachelor's programmes engage in scientific research by elaborating their term papers, bachelor's theses, preparing presentations for the RISEBA International Student Research and Artistic Creativity Conference "Changing World – in Search for New Solutions", as well as in some cases together with their supervisor preparing articles for internationally reviewed collections of articles.
2. Students of master's programmes participate in scientific research by developing master's theses, preparing presentations for the above-mentioned RISEBA international student scientific conference, preparing publications in internationally reviewed collections of articles and journals, participating in scientific projects and conducting research together with RISEBA researchers.

Every year, in accordance with market requirements and professional activities, the topics of the university student scientific conference are supplemented and new cooperation partners are attracted.

2.4.6. Provide a brief description and assessment of the forms of innovation (for instance,

product, process, marketing, and organisational innovation) generally used in the higher education institution, especially in study field subject to the assessment, by giving the respective examples and assessing their impact on the study process.

RISEBA pays a lot of attention to the creation of innovative academic content and the use of innovative learning methods that go hand in hand with the latest trends. An important part of the learning process is the moodle system (e-riseba), where faculty members upload study materials and ensure interactive communication with students: post information about test results, self-tests etc. As mentioned in previous sections, undergraduate students of RISEBA have an opportunity to take the Sulitest about conditions for sustainable development, which includes questions about the innovation process. The innovative and interactive methods applied by RISEBA have been highly appreciated by surveyed students and graduates.

Considering the RISEBA concept of "Business meets art", creative and innovative activities are applied to students in the introductory weeks of bachelor's and master's studies, such as meetings with industry specialists and visits to the Riga City Architects Office and visits to architecturally essential objects. An example of an introductory week can be found in Appendix 14.v.Introductory Week Program.

The study process provides a comprehensive approach, supporting student-initiated research projects and the most successful students in the study process and involving students in architectural design and artistic, creative projects. The research and innovation process is based on a specific creative personality; therefore, it is essential to create and develop young professionals' creative potential and independent thinking, formulate and communicate professional aspects and professional qualifications strategically and analytically. Within the framework of studies and research, students can get acquainted with companies working in architecture, practising architects, individual projects and constructions both in Latvia and abroad.

2.5. Cooperation and Internationalisation

2.5.1. Provide the assessment as to how the cooperation with different institutions from Latvia (higher education institutions/ colleges, employers, employers' organisations, municipalities, non-governmental organisations, scientific institutes, etc.) within the study field contributes to the achievement of the aims and learning outcomes of the study field. Specify the criteria by which the cooperation partners for the study field and the relevant study programmes are selected and how the cooperation is organised by describing the cooperation with employers. In addition, specify the mechanism for the attraction of the cooperation partners.

Being a private higher education institution, since its establishment RISEBA has focused on international recognition and visibility. Cooperation with foreign bodies is regulated by the internationalisation strategy of the university, which is mostly related to the internationalisation of students and members of the faculty to create an academic environment and offer an experience that prepares students for various types and levels of career development in the global labour market. By developing international cooperation and expanding the range of partner bodies, RISEBA will strengthen its capacities and performance that will allow facing complex national and

international challenges in the future.

Mission: reinforce the international standing of RISEBA in all areas of its operation.

Vision: ensure visibility and recognition of RISEBA in the international fora as a high-level education institution and international research, academic and corporate communication centre.

The strategic objective of the study direction "Architecture and Construction" is to ensure the dynamic change of RISEBA University of Applied Sciences within the framework of the higher education system of Latvia to ensure that the obtained degree and diploma are recognised in the labour market of European level, as well as is useful for the continued education in other European countries.

Internationalisation can be divided into two types: external internationalisation and internal one.

1. INTERNAL INTERNATIONALIZATION (all international activities not related to mobility), namely, further internationalisation of the university to ensure that students can realize their potential in the international fora and develop their international competencies.
2. EXTERNAL INTERNATIONALIZATION (all mobility-related international activities), namely, the development of internationalisation by establishing cooperation with various countries and regions and by offering international opportunities to students and members of the faculty.

RISEBA is an active member of several local organisations promoting its visibility in Latvia:

- Latvia Association of Architects
- National Heritage Board
- National Council of Architecture of the Ministry of Culture
- Latvian Association of Landscape Architects
- State Culture Capital Foundation
- Union FREE RIGA
- Kim? Latvian Centre for Contemporary Art
- Latvian Chamber of Commerce and
- IndustryEmployers Confederation.
- Association of Exporters of Higher Education.
- And many others.

Students have the opportunity to use various forms of cooperation, including participation in events organized by partner universities - conferences, seminars, projects, creative workshops, summer schools, etc.

Opportunities for the co-operation of the study direction "Architecture and Construction" and programmes of the direction with related programmes of Latvia University of Life Sciences and Technologies (LLU), Riga Technical University (RTU) and Riga Building College, which are also included in this study direction, exist, see Annex No. 15.

LLU implements the study programme "Landscape Architecture and Planning", which is developed as a related programme to the RISEBA programme "Architecture"; therefore, the parties have concluded a bilateral cooperation contract on the transfer of students in the event of liquidation of a study programme.

Individual lecturers of RTU participate in the architectural studies programmes of RISEBA (E. Bērziņš, Ģ. Frolovs, A. Lešinskis, L. Goldbergs, M. Iltiņa, I. Jurāne).

Students choose their internship organisations independently or approach a Student Career Counsellor of RISEBA Career Development Centre, which offers an internship placement. When the

internship organisation is chosen, the tasks of the internship and the possibility to perform them should be taken into account. Furthermore, these tasks should be related to the respective study programme.

Three years ago a new position was created at RISEBA: Student Career Counsellor, to reinforce support to students for their professional and career development. One of his/her duties is to help students find suitable internship organisations that would meet the requirements of the respective programme and be in line with the expected learning outcomes. The Career Counsellor provides individual consultations to all stakeholders concerning the search for suitable internship opportunities, drafting CVs, efficient communication with companies, etc. If a student cannot find a place for his/her internship, the Career Counsellor helps to do that in cooperation with the Programme Director, if needed.

To a large extent, the Programme director may be of use, as employers tend to directly approach the director to inform them about their internship offers. Direct long-term cooperation agreements with respective industries that provide for internship offers (as far as possible) are yet another support mechanism to ensure that students can complete their internships.

In 2012, RISEBA prepared a Statute of Internship that regulates how internships are organised, namely, under the requirements of Cabinet Regulation No. 785 "Procedure for organizing internships and insuring students" (20.11.2012) and Cabinet Regulation No. 165 "Regulations on documentation required for organisation of pedagogical processes at vocational education establishments and professional qualification of examination centres" (06.03.2007). In 2019, this statute was updated and approved by the Methodological Council on 24.09.2019. According to the Statute, each study programme has a specific internship programme presented to students and internship supervisors from the university and employer organisations in due time. A trilateral agreement about the internship is signed with every student, and a database of internship organisations is created to facilitate efficient cooperation with the industry not only to offer internships but also to involve the respective companies in the academic process in other ways. Each internship agreement is entered into the internship registry of the Faculty of Architecture and design.

At the end of each internship, each student should submit an internship report, which is graded by an examination commission that reviews the accuracy and certainty of performance, the activity and self-initiative of the student, his/her creative abilities, the level of knowledge acquired at the university to perform professional duties, as well as the alignment of the description of tasks performed during the internship with the internship programme.

According to internal rules and procedures, all assessed internship reports are kept for 5 years.

Applications for this programme may be submitted twice a year, and every student who has completed his/her Year 1 studies may apply. Students of the final year may use this opportunity 148 even after graduation. Selection of students takes place under criteria set out in internship rules and regulations: average grade, no academic or financial debts, and motivation of the student. Students independently find internship opportunities in any company of any EU MS except their host country. Any duties fulfilled during the internship should be synchronised with the purpose of the programme. Credit points are awarded for an Erasmus+ internship after its defence.

The study internships in the architecture and construction study direction are included in the professional master's study programme as a mandatory component. During the internships, the students shall acquire practical work skills at architectural bureaus in Latvia and abroad, as well as state and municipal institutions.

The management of the study programme maintains a relationship with the employers in providing student internships. Several companies are also involved in practical research of the students, offering them topics and locations for research. RISEBA architecture study programmes are designed so that the graduates acquire the necessary skills to work in architectural companies by the best standards.

RISEBA also cooperates with national professional associations and organisations. To ensure the cooperation of the study process and provide the teaching staff with a professional environment, RISEBA teaching staff participate as experts in the commissions, working groups and advisory councils of state, local government and non-governmental organisations:

- J. Dripe, Adviser to the Ministry of Culture of the Republic of Latvia, Member of the National Council of Architecture, Member of the Council of the Latvian Association of Architects, Member of the Board of the Latvian National Library Support Society, Head of the International Jury of the European Railway Riga Station and Area.
- A. Kronbergs, Member of the Council of the Latvian Association of Architects, Head of the National Council of Architecture and the Council of Riga Historical Centre.
- D. Suhanova, participation in the accreditation commission of Riga Building College.
- I. Paklone, participant of the action committee of the Latvian Association of Architects annual award and event moderator, etc.

In the process of study field implementation, there is a close relationship with the employers in the field of architecture. The teaching staff of the architecture programme represent leading Latvian and foreign architecture offices – “Arhis”, “Sarma&Norde”, “DJ arhitekti”, etc. Thus it is not only possible to provide internships for the students, but also to establish closer cooperation in the development of the students’ skills. The potential employers are involved as the teaching staff of the programme (I. Mengēlis, D. Jaunzems, A. Kronbergs, etc.). Practising architects are invited to participate in the review and juries of the semester projects of Architecture Department students or as supervisors and reviewers of Bachelor’s or Master’s Theses.

To consolidate the link with the professional environment at RISEBA, a special procedure has been adopted and lectures and seminars conducted by specialists in the sector and associated areas are also included in the study process. Since 2011, the Department of Architecture has been organising an open **guest lecture cycle “Slice of Architecture”**.

In the 2019/2020 academic year, the following open guest lectures were organised:

1. On 14 November 2019 the Head of *Edge Architects*, **I. Krasinski (UAE)**, talks about his experience in the Middle East and the Dubai-based company.
2. Architect, teacher and PhD candidate **E. Maltceva (RU)** Gave an open lecture in October and elaborated on the following topics and issues: Industrial areas in an urban environment. Ways of renovation. Liquidation or modernisation of industrial areas? (architectural and town planning aspect).
3. On 24 October 2019 Basics of Design guest lecturer **H. Alsiņš (LV)** gave a lecture on “What is architecture”.
4. On 12 December 2019 architect and urban planner **A. Feļtins (LV)** gave the guest lecture “Climate Change Adaptation of Urban Blocks”.
5. On 13 February 2020 **K. Kaljurand (EE)** from the Finnish Institute in Estonia introduces students to the “(Re)configuring Territories” interdisciplinary research programme in NARVA.
6. On 13 February 2020, an open lecture within the SLICE OF ARCHITECTURE cycle – EASA 2020 afternoon of stories.
7. **On 1 October 2020, in an open lecture within the Slice of Architecture cycle -architect,**

lecturer and researcher **Ramon Cordova (MEX)** presented his architecture- related work experience in Mexico and various approaches that are used in the process of creative work.

8. ON 18 March 2021, an open online lecture within the SLICE OF ARCHITECTURE cycle. Turkish architect and lecturer **E. Duyan (TR)**: "Is Architecture a Form of Art? If yes, can architectural design serve as a critical manifestation that exceeds the compositional solution of a certain functional programme?"
9. On 7 May 2021 an open lecture with R. Cordova within the "Slice of Architecture" cycle "V36: Potentials and Opportunities for Reimagining the city" was online.

In addition to guest lectures organised by the RISEBA Department of Architecture, students are also invited to attend the lectures and seminars of the Latvian Union of Architects, the Museum of Architecture and other institutions intended for lifelong learning.

RISEBA Career Development Centre and Art Studio (Lecturer of the Department of Architecture A. Kampars) organises specialised courses (drawing and painting, history of art and architecture), seminars and open lectures in various formats.

To establish contacts and develop mutual co-operation with professional architects, the student self-government of RISEBA organises a **hockey tournament of young architects "Arhikauss"** (ArchiCup) for professional architects and architecture students in February every year.

The Architecture programmes of RISEBA are represented at *NordARK*, which is a Northern-European cooperation network, which involves the schools of architecture of Scandinavia and the Baltic states.

2.5.2. Provide the assessment as to how the cooperation with different institutions from abroad (higher education institutions/ colleges, employers, employers' organisations, municipalities, non-governmental organisations, scientific institutes, etc.) within the study field contributes to the achievement of the aims and learning outcomes of the study field. Specify the criteria by which the cooperation partners suitable for the study field and the relevant study programmes are selected and how the cooperation is organised by describing the cooperation with employers. In addition, specify the mechanism for the attraction of the cooperation partners.

Participation of RISEBA in international organisations and international projects, as well as cooperation agreements with foreign organisations, allow the academic direction to secure cooperation opportunities abroad. The university is constantly looking for ways to cooperate and agrees to cooperate with foreign universities and colleges that are interested in exchanges of students and academic personnel, as well as the implementation of joint study programmes.

RISEBA is an active member of several international organisations promoting its visibility in abroad:

- European League of Institutes of the Arts ELIA - an association that unites higher educational institutions that implement study programmes in the fields of art and architecture
- European Management Development Fund (EFMD)

- CEEMAN International Association for Management Development in Dynamic Societies
- Association to Advance Collegiate Schools of Business (AACSB)
- European Association for International Education (EAIE)
- Consortium of International Double Degrees CIDD
- MIB EPAS Consortium.
- Baltic Management Development Association (BMDA).
- Paris Chamber of Commerce.
- British Chamber of Commerce.
- American Chamber of Commerce
- Latvian-Irish Chamber of
- Commerce. Swedish Chamber of
Commerce
- And many others.

Students can make use of various types of international cooperation:

- Double degree: according to this agreement, a part of studies is completed at RISEBA, and the rest in a foreign university (length of foreign studies depends on the university and the chosen programme). Bypassing the required exams and defending the thesis in both universities, a double diploma can be earned (from the foreign university and RISEBA);
- We have started negotiations with the Faculty of Architecture at Universidad CEU Cardenal Herrera (Valencia, Spain) regarding the opportunities for introducing a double degree.
- Bilateral exchange programme: a possibility to study for a semester or two in a partner university that is not a part of the Erasmus+ programme;
- ERASMUS+ programme: an exchange programme for the best students that allows them to study for one or two semesters in a European Union university and receive a bursary, or to complete a professional internship in another country (an EU Member State) and receive a bursary.
- Participation in events organised by foreign academic partners: conferences, seminars, projects, creative workshops, summer schools, etc.

This co-operation of the international level helps students exchange their experience, learn about the specific nature of the sector in the respective country and examples of best practices, as well as experience different methods of instruction, while the management of the Architecture and Construction direction of studies is enabled to reach the objectives of their study programmes: preparing highly qualified, competent and competitive specialists not only on the labour market of Latvia but also in the international environment.

Currently, RISEBA has signed more than 130 cooperation agreements with European and third-country universities and colleges about student and faculty mobility and other cooperation possibilities in specific academic directions. When a university or a college is selected for a mobility project, several criteria are taken into account, for example, the similarity of the programme, ability to ensure mobility, ability to conduct common research, and the standing of the partner university or college.

There are 18 partner universities in the study direction of "Architecture and Construction" in 10 countries (Cyprus, Denmark, Germany, Lithuania, the Netherlands, Poland, Portugal, Slovenia, Spain and Turkey), see Annex ERASMUS+ partner universities.

Good preconditions for cooperation in the area of science and research at an international and national level have developed within the framework of the study direction of architecture. Co-operation has been developed and the exchange of lecturers with the Technical University of Berlin,

Aalto University, Estonian Academy of Arts, CEU Cardinal Herrera University, Spain is in progress; negotiations regarding co-operation with the Polytechnic University of Milan have been commenced. The guest lecturers of the Faculty of Architecture and Design are also lecturing on architecture programmes of Antwerp, Gent and Münster universities.

Since 2014, the programme "Architecture" of the RISEBA study direction "Architecture and Construction" has been involved in cooperation projects of European schools of architecture.

During the reporting period, Northern Europe orientated cooperation was emphasised by attracting Norwegian architect *Ole Wiig* as a chairman of the Bachelor's thesis evaluation commission and Tomas Tammiss, the former dean of the Faculty of Architecture at the Estonian Academy of Arts, on 29 and 30 January 2019.

Cooperation with Latvian and foreign institutions also takes place through study placements. In addition to professional internships required during academic programmes, students also have an opportunity to participate in the Erasmus+ internship mobility facility. Students may apply for an internship in any European company that operates in the respective area of the programme, and receive a bursary. During the last six years, the number of students, who have participated in the Erasmus+ internship mobility programme has increased twofold.

No joint or double degree programmes are currently being implemented within the study direction of "Architecture and Construction". RISEBA has addressed several partners to develop a potential double degree programme and negotiations are currently in progress.

The overall experience of the university in the implementation of joint programmes is positive.

Double degree programme contracts have been concluded in four programmes of RISEBA University of Applied Sciences: Bachelor's study programmes "European Business Studies" and "Public Relations and Management Advertising", as well as Master's study programmes "International Business" and "Public Relations Management". Double degree contracts have been concluded with the following higher education establishments:

- Kedge Business School, France,
- Würzburg University of Applied Sciences, Germany
- Regensburg University of Applied Sciences, Germany
- Haaga-Helia University of Applied Sciences, Finland
- ESC Troyes, France,
- Mainz University of Applied Sciences, Germany,
- Peoples' Friendship University of Russia (PUDH), Russia

Within the framework of double degree programmes, the students have an opportunity to spend part of their study period at a co-operating foreign higher educational institution, where the duration of studies depends on the selected university and study programme. By successfully passing the examinations and defending the final paper at both universities, diplomas of both higher educational establishments shall be received - the foreign university diploma and RISEBA diploma.

The main criterion for the selection of the foreign partner university, where double degree programmes will be implemented, is the similarity of both university programmes in terms of content, as well as the objectives and results to be obtained within the programme. The second criterion of similar importance is the scope of the programme in credit points and the duration of studies. Another important criterion is the reputation and achievements of the partner university.

The contract on a double degree programme increases the opportunities for students at both universities to obtain knowledge, skills and experience in the international environment. Double Degree programmes are characterised by a high degree of internationalisation. They provide the students with an opportunity to obtain knowledge and experience of the best lecturers of the other higher educational institution by using the library and technological resources, to develop contacts in the industry, which can be later used in professional activity.

Within the study programmes of the Architecture and Construction direction, negotiations have been initiated with the Faculty of Architecture of Universidad CEU Cardinal Herrera (Valencia, Spain) regarding the development of a double degree programme with the Faculty of Architecture and Design of RISEBA University of Applied Sciences, which would allow the students to expand their knowledge and experience by studying in an international environment.

2.5.3. Specify the system or mechanisms, which are used to attract the students and the teaching staff from abroad. Provide the assessment of the incoming and outgoing mobility of the teaching staff in the reporting period, the mobility dynamics, and the issues which the higher education institution/ college faces with regard to the mobility of the teaching staff.

The attraction of foreign students and lecturers at RISEBA, including the study field "Architecture and Construction", is regulated by the documents adopted by the university: internationalization strategy, annual admission rules, the admission process for foreign students and others. RISEBA The internationalization strategy determines the target markets of foreign students, which are the neighbouring countries (Lithuania, Estonia, Russia), Georgia, the CIS countries, Ukraine, the European Union and the countries of South Asia.

Until now, students from the following countries have been attracted to both Bachelor's and Master's study programs in the field of "Architecture and Construction": Russia, Uzbekistan, Kyrgyzstan, Kazakhstan, the United States of America, Lithuania, Belarus, Moldova, Sweden.

In the last six years, there has been interested from foreign exchange students in the field of study architecture, and in six years, a total of 20 exchange students have chosen RISEBA.

During the reporting period, the number of foreign students enrolled in the field of "Architecture and Construction" has been variable, with an average of 2-4 foreign students per year. However, in 2019/2020. The number of foreign students admitted during the study year increased to 9 students. The number of outgoing students is 1 to 2 students per study year. Even students use the internship opportunities offered by the Erasmus + program every year. It is important to note that the Covid-19 pandemic did not significantly affect the operation of the exchange program, but there is still interest from incoming students. On the other hand, RISEBA students are more cautious, despite the growing interest in mobility programs.

Statistical data on the outgoing and incoming mobility of students in the reporting period can be found in Appendix No.17.

RISEBA University of Applied Sciences is a member of the Higher Education Export Association and, together with other higher educational establishments in Latvia, promotes the acquisition of higher education in Latvia. Furthermore, in spring 2019, RISEBA University of Applied Sciences concluded

a contract with the Ministry of Education and Science on good practices in the attraction of foreign students, which provides for stricter attraction criteria for student quality and upgrading of attraction processes and channels. The aforementioned contract consists of:

1. General terms and conditions for the attraction of foreign students and their studies in Latvia.
2. Terms and conditions of study opportunities and receipt of education document.
3. Procedure for the selection of foreign students.
4. Terms and conditions of marketing measures for the attraction of foreign students and work with commercial agents.

5 Terms and conditions for the provision of study and environmental support.

6 Terms and conditions of co-operation with the ministry and state administration bodies.

This kind of contract is an important support for the higher educational institution for the attraction of foreign students, as well as the improvement of the study process.

Currently, RISEBA mostly achieves that by participating in foreign shows and fairs or by relying on a network of agents. Potential foreign students also apply themselves. During the 2018/2019 academic year, employees of the Marketing and External Relations Department visited 32 learning institutions in 8 countries and signed 25 new agreements with scouting agents taking into account the pre-determined target countries. Several communication channels are used to approach potential foreign students:

- International education shows in specific target countries
- Scouting agents
- General and vocational schools in neighbouring countries
- Embassies of the Republic of Latvia, and embassies of other countries in the Republic of Latvia
- Foreign chambers of commerce and industry
- Current students and alumni

In addition, the social media accounts of the university on Facebook, Twitter, Instagram, LinkedIn, YouTube, and other platforms are actively used.

Students also gain international experience in guest lectures, practical classes and seminars with foreign specialists. Foreign specialists are mainly attracted in the following ways. For example, they have shown interest in teaching study courses at RISEBA by sending their portfolio; they are addressed to teach study courses according to the "International Weeks" results organized by RISEBA, using personal contacts, etc.

International projects implemented by the university are only one of the ways to attract foreign teachers. Foreign lecturers are also drawn to RISEBA within the ERASMUS + mobility program. On average 6 foreign lecturers from the Baltic states, Austria, Belgium, France, the Netherlands, Norway, Poland, Germany and other countries lecture within the framework of the architecture and construction study direction. (*Annex No. 16 (Statistical data on foreign students and lecturers during the reporting period of 2016-2021)*).

Mobility dynamics

The dynamic changes in incoming lecturer mobility have been fluctuating over the years (see Annex 18).

The lecturers usually participate in mobility trips to international weeks organised by partner universities, as well as visit higher educational institutions that RISEBA have co-operation programs

with (for instance, University CEU Cardenal Herrera, Valencia, Spain, Alto University Helsinki, Finland, etc.). On average 1 to 2 lecturers of the Architecture and Design direction participate in mobility trips every year.

The amount of visiting lecturers and specialists in the sector is larger, which is associated with participation in the diploma paper evaluation commission, open lecture course "Slice of Architecture", which is open for attendance by all students, seminars and foreign guest lecturers.

Difficulties of the university as to faculty mobility

As RISEBA has already focused on faculty mobility for several years, there is a specific system that allows reducing potential risks and difficulties, at the same time taking into consideration potential challenges:

- Aligning the topic and expected learning outcomes of specific lectures of incoming faculty with requirements of the programme and academic courses: topics of lectures are pre-agreed with foreign faculty, and expected learning outcomes are discussed to approximate them as far as possible with the academic programme under which the respective lecture is delivered; Delivery and inclusion of lectures offered by foreign faculty in the list of lectures, as all lectures of the respective academic year are planned well before any guest lecturers apply; Quality of lectures offered by incoming faculty, when they are delivered at RISEBA for the first time, as students are used to interactive learning methods that are not always used by foreign faculty;
- Mobility of outgoing faculty, as lecture offers from partners are usually received at the end of the academic year, and these lectures take place on specific dates, while RISEBA has very strict requirements as to any changes in the timing of lectures and classes;
- Limited financing for outgoing mobility: quite often, the number of faculty members that wish to use this opportunity is larger than the available financing, thus there is a set of criteria that prioritizes those members of the faculty that use mobility opportunities for the first time, have prepared quality course outlines for department heads, etc.

2.6. Implementation of the Recommendations Received During the Previous Assessment Procedures

2.6.1. Assessment of the fulfilment of the plan regarding the implementation of the recommendations provided by the experts during the previous accreditation of the study field, as well as the assessment of the impact of the given recommendations on the study quality or the improvement of the study process within the study field and the relevant study programmes.

Study direction "Architecture and Construction" was accredited in 2013 for six years including the academic study programme "Architecture".

Since 2016, RISEBA University of Applied Sciences has obtained the right to implement the professional Master's programme "Architecture".

In accordance with the Amendments to the Law on Higher Education Institutions of 1 January 2019, the accreditation of the study direction "Architecture and Construction" is in effect until 31 December 2022.

Currently, both programmes are successfully operating, and they are in demand and topical, as evidenced by the annual increase in the number of students.

The summary of the recommendations of experts provided during the previous study direction and respective study programme demonstrates that they are mainly associated with:

1. Increase in the number of leading positions for the provision of sustainability of the study programme;
2. Introduction of employee development policies;
3. Provision of more extensive mobility options;

4 Supplementation of library resources.

On the outlook of the sustainability of the "Architecture and Construction" study programme in the period from, 2016 to 2021, 2 lecturers, 2 assistant professors, 1 researcher and 2 leading researchers were elected, as well as 1 lecturer, 1 assistant professor and 1 leading researcher were re-elected. The total number of leading positions at the Faculty of Architecture and Design has increased by 7 positions. At present, the number of management positions has increased to 10 (see Annex Development of academic staff).

The university regularly conducts personnel training and develops methodological materials to assist in daily work and work with students. (see Annex Methodical seminars). Training on the methodology and tools of remote work became especially topical over the last two years when the pandemic caused by COVID-19 forced the transfer of training at the university to a remote form of studies. The use of online tools and MOODLE environment during the provision of studies was especially emphasised.

RISEBA University of Applied Sciences organises student conferences on scientific research and artistic creativity works of the students to demonstrate research and artistic creative work results of students in the study directions of RISEBA by raising student interest in the performance of scientific work. Student conferences of RISEBA University of Applied Sciences (see Annex RISEBA conferences). The international conference "Architecture of Migration" was conducted in 2019 with the support of RISEBA. Dina Suhanova, the lecturer in the Department of Architecture and Design and Director of the Bachelor's programme participated in the conference.

The mobility of the architecture and construction study direction is variable (see Annex No. 18), because the most active arrival of foreign lecturers to RISEBA occurs within the framework of international weeks, which, in turn, are dedicated to different topics every year. This, in turn, influences the changes in the dynamics of arriving lecturers. Since RISEBA is the only higher educational institution in Latvia that has received international EPAS accreditation over recent years, the lists of partner universities have been significantly reviewed over the last years - cooperation with higher education institutions that have received equivalent accreditations is being developed, while co-operation with higher educational institutions that have failed to develop their operations to comply with international standards has been terminated.

The number of arriving lecturers and experts is higher, which is associated with tier participation in the jury commissions for the defence of Bachelor's and Master's theses. Over the 2020/2021 academic year, a considerable decrease in lecturer mobility was observed due to the pandemic caused by Covid-19, when the study process was completely conducted remotely.

To improve the quality of studies, the offer of the RISEBA library has been enriched during the reporting period (see Annex Book order 2021) – the number of book orders in English is increasing rapidly, as well as the students and lecturers were provided with an opportunity to use different

databases of international level. Every year, the programme directors of RISEBA order the latest scientific literature, considering the topicalities of the science sector, professional sector and the formulated study outcomes within the limits of the available budget.

The library of RISEBA University of Applied Sciences has expanded the access to the study direction by information, study and research objectives, scientific activities, by offering the information resources available in the stock of the library, as well as by ordering information resources from other libraries for a certain period (Inter-library subscription). The opportunity for students to use the academic literature was significantly expanded after the connection of the library to the integrated library information system ALEPH 500. All collections of the RISEBA library have been digitalised and entered into the joint catalogue of libraries of national importance. This provides the students of RISEBA with considerably wider access to the information related to their study field, databases and press publications from the collections of other libraries included in the joint catalogue. For instance, currently, the students of RISEBA can use the databases of the National Library of Latvia and databases offered by the libraries of other educational institutions (LU, RTU, RSU, etc.).

The library of RISEBA completed the process of accreditation and was accredited by the Ministry of Culture on 17 June 2016, obtaining the status of a library of local significance.

EBSCO Academic Search Complete full-text publications in humanities and social sciences), Web of Science full-text publications in natural sciences, social sciences, humanities, art, etc.), Emerald (business management information, 4,116 full-text publications for download), Greenleaf Publishing PRMEC (e-books covering a variety of topics: corporate liability, business ethics, environmental policy and management), Leta.lv, Nozare.lv, databases are being subscribed to and used every year. These databases are available remotely for use beyond the premises of the higher educational institutions. The managers of the subscribed databases forward the statistical review of e-collection use to the library, the programme directors of the university are surveyed and the review of information resources (cases, online courses, simulations, videos, etc.) required for the acquisition of the programme is performed at the end of the year. The library maintains subscriptions to DienasBiznesss, Kapitāls, Ir nauda, Harvard Business Review, Blumberg Business Week, The Economist, DETAIL, A10 etc., to satisfy the needs of students and lecturers.

Information on the library links to the library catalogue and subscribed databases, as well as library By-law and terms of use thereof, are available on the website of RISEBA University of Applied Sciences.

The lecturers provide opinions on the quality of the resources offered by the subscribed databases, as a result of which the decisions regarding further subscription to the respective databases are made. The students and lecturers are being informed of the free-access resources that are useful for studies - databases, e-magazines, e-books, as well as e-libraries and trial access to foreign full-text databases that are available for a certain period. The trial access to such databases is provided via the proxy of the Culture Information Systems Centre. Free trial access to Taylor&Francis Group eBooks was ensured in 2018.

Direct access to subscribed databases, as well as free-access resources and free trial databases, is made possible on the website of university. The university has concluded a cooperation contract with Harvard

Business Publishing. The lecturers may order and use, as well as copy and multiply the materials required for study needs.

2.6.2. Implementation of the recommendations given by the experts during the evaluation of the changes to the study programmes in the respective study field or licensed study programmes over the reporting period or recommendations received during the procedure for the inclusion of the study programme on the accreditation form of the study field (if applicable).

During the reporting period, a new programme was licensed within the Architecture and Construction study direction – a professional Master’s programme “Architecture” to provide the students with the opportunity to acquire general knowledge and skills in the sector of architecture and associated sectors, to acquire basic skills and competencies required for work in the profession of an architect and planner to commence practical work under the leadership of a certified architect, and to prepare for further doctoral studies of architecture or other studies related to the environmental development arts.

Since the 2017/2018 academic year, the professional Master’s programme has demonstrated itself as a stable and demanded one. The average number of students in a group is 8. There have been 3 graduations during the reporting period with only one dropout student.

The performance of the plan for the implementation of recommendations provided by preliminary accreditation or licensing experts is enclosed in Annex 19.

Annexes

| I - Information on the Higher Education Institution/ College | | |
|--|---|--|
| Information on the implementation of the study field in the branches of the higher education institution/ college (if applicable) | | |
| List of the governing regulatory enactments and regulations of the higher education institution/ college | 1.annex. Galvenie iekšējie normatīvie akti un regulējumi_ENG_31.03.XLS | 1.pielik. Galvenie iekšējie normatīvie akti un regulējumi_LV_31.03(2).XLS |
| The management structure of the higher education institution/ college | 2.pielik. RISEBA struktūra_EN_14.04.2021_apstipr. Senātā.pdf | 2.pielik. RISEBA struktūra_LV_14.04.2021_apstipr. Senātā.pdf |
| II - Description of the Study Field - 2.1. Management of the Study Field | | |
| Plan for the development of the study field (if applicable) | Annex 3_The development direction of the study field.docx | 3.pielik. Studiju virziena attīstības plans_L.docx |
| The management structure of the study field | 4.annex. Studiju virziena pārvaldības struktūra_EN.docx | 4.pielik. Studiju virziena pārvaldības struktūra_LV.docx |
| A document certifying that the higher education institution or college will provide students with opportunities to continue their education in another study programme or another higher education institution/ college (agreement with another accredited higher education institution or college) if the implementation of the study programme is terminated. | 5.annex. līguma tulkojums_EN.docx | 5.pielik._Sadarbības līgums_LV.zip |
| A document certifying that the higher education institution or college guarantees compensation for losses to students if the study programme is not accredited or the study programme license is revoked due to actions (actions or omissions) of the higher education institution or college and the student does not wish to continue studies in another study programme. | 6.annex_Student's loss guaranty_ENG (Apliecinājums par kompensācijas garantiju).pdf | 6.pielik._Apliecinājums par kompensācijas garantiju_LV.pdf |
| Standard sample of study agreement | 7.annex_Study contract_213.1-3065ENG.pdf | 7.pielikums_Studiju līgums_LV.pdf |
| II - Description of the Study Field - 2.2. Efficiency of the Internal Quality Assurance System | | |
| Analysis of the results of surveys of students, graduates and employers | 8. annex. Summary of RISEBA Employers' Survey Results of the Faculty of Architecture _ENG.docx | 8.pielik.Arhitekti darba devēju aptauja _LV.docx |
| II - Description of the Study Field - 2.3. Resources and Provision of the Study Field | | |
| Basic information on the teaching staff involved in the implementation of the study field | 9. annex. Mācībspēki_ENG.xlsx | 9. pielik. Mācībspēki_LV.xlsx |
| Biographies of the teaching staff members (Curriculum Vitae in Europass format) | Mācībspēka CV_EN.zip | Mācībspēka_CV_LV.zip |
| A statement signed by the rector, director, head of the study programme or field that the knowledge of the state language of the teaching staff involved in the implementation of the study programmes within the study field complies with the regulations on the state language knowledge and state language proficiency test for professional and official duties. | 11.annex_Apliecinājums par valsts vai_lim_EN.pdf | 11.pielik._Apliecinājums par valsts vai_lim_LV.pdf |
| A statement of the higher education institution/ college on the respective foreign language skills of the teaching staff involved in the implementation of the study programme at least at B2 level according to the European Language Proficiency Assessment levels (level distribution is available on the website www.europass.lv, if the study programme or part thereof is implemented) | 12.annex_Apliecinājums par val. B2 lim_EN.pdf | 12.pielik. Apliecinājums par val. B2 lim_LV.pdf |
| II - Description of the Study Field - 2.4. Scientific Research and Artistic Creation | | |
| Summary of quantitative data on scientific and/ or applied research and / or artistic creation activities corresponding to the study field in the reporting period. | 13. annex Compilation of quantitative data on scientific and/or applied research and/or artistic creation activities.docx | 13.pielikums_Kvantitatīvo datu apkopojums_LV.docx |
| List of the publications, patents, and artistic creations of the teaching staff over the reporting period. | 14.annex. Akadēmiskā personāla zinātniskie darbi un publikācijas pārskata periodā-EN-4.docx | 14.pielik. Akadēmiskā personāla zinātniskie darbi un publikācijas pārskata periodā-4_LV.docx |
| II - Description of the Study Field - 2.5. Cooperation and Internationalisation | | |
| List of cooperation agreements, including the agreements for providing internship | 15.annex. Sadarbības līgumu saraksts_EN.docx | 15.pielik. Sadarbības līgumu saraksts_LV.docx |
| Statistical data on the teaching staff and the students from abroad | 16. annex_Statistics on foreign students and teaching staff_ENG.zip | 16.pielik_Statistikas dati par ārvalstu studentiem un mācībspēkiem_LV.zip |
| Statistical data on the incoming and outgoing mobility of students (by specifying the study programmes) | 17.annex. Statistiskie dati par studējošo izejošo un ienākošo mobilitāti-EN.docx | 17.pielik. Statistiskie dati par studējošo izejošo un ienākošo mobilitāti_LV (2).docx |
| Statistical data on the incoming and outgoing mobility of the teaching staff | 18.annex. Statistiskie dati par mācībspēku ienākošo un izejošo mobilitāti-EN.docx | 18.pielik. Statistiskie dati par mācībspēku ienākošo un izejošo mobilitāti.docx |
| II - Description of the Study Field - 2.6. Implementation of the Recommendations Received During the Previous Assessment Procedures | | |
| Report on the implementation of the recommendations received both in the previous accreditation and in the licensing and/ or change assessment procedures and/ or the procedures for the inclusion of the study programme on the accreditation form of the study field. | 19. annex Recommendation implementation report.docx | 19.pielik. Rekomendāciju izpildes pārskats_LABOTS.docx |
| An application for the evaluation of the study field signed with a secure electronic signature | RISEBA_Iesniegums_Arhitekti_14.06.2022_22_1.1-15_161.edoc | RISEBA_Iesniegums_Arhitekti_14.06.2022_22_1.1-15_161.edoc |
| III - Description of the Study Programme - 3.1. Indicators Describing the Study Programme | | |
| Sample of the diploma and its supplement to be issued for completing the study programme | 5.pielik. Statistiskie dati par studējošajiem studiju programmā _ENG.docx | 5.pielik. Statistiskie dati par studējošajiem studiju programmā _ENG.docx |
| For academic study programmes - Opinion of the Council of Higher Education in accordance with Section 55, Paragraph two of the Law on Higher Education Institutions (if applicable) | 5.pielik. Statistiskie dati par studējošajiem studiju programmā _ENG.docx | 5.pielik. Statistiskie dati par studējošajiem studiju programmā _ENG.docx |
| Compliance of the joint study programme with the provisions of the Law on Higher Education Institutions (table) (if applicable) | 5.pielik. Statistiskie dati par studējošajiem studiju programmā _ENG.docx | 5.pielik. Statistiskie dati par studējošajiem studiju programmā _ENG.docx |
| Statistics on the students in the reporting period | | |
| III - Description of the Study Programme - 3.2. The Content of Studies and Implementation Thereof | | |
| Compliance with the study programme with the State Education Standard | 6. annex_Table of "Architecture" study program compliance with state education standards_MA_EN.docx | 6. pielikums_Tabula par studiju programmas Arhitektūra atbilstību valsts izglītības standartam_LV.docx |
| Compliance of the qualification to be acquired upon completion of the study programme with the professional standard or the requirements for professional qualification (if applicable) | | |
| Compliance of the study programme with the specific regulatory framework applicable to the relevant field (if applicable) | | |
| Mapping of the study courses/ modules for the achievement of the learning outcomes of the study programme | | |
| The curriculum of the study programme (for each type and form of the implementation of the study programme) | 9.piel.st.pr.Arhitektūra plāns pilna laika studijām_MA_EN r3.docx | 9. piel.st.pr. Arhitektūra plāns pilna laika_MA_LV r3.docx |
| Descriptions of the study courses/ modules | | |
| Description of the organisation of the internship of the students (if applicable) | | |
| III - Description of the Study Programme - 3.4. Teaching Staff | | |
| Confirmation that the academic staff of the doctoral study programme includes not less than five doctors, of which at least three are experts approved by the Latvian Council of Science in the branch or sub-branch of science in which the study programme intends to award a scientific degree (if applicable) | | |
| Confirmation that the academic staff of the academic study programme complies with the requirements specified in Section 55, Paragraph one, Clause 3 of the Law on Higher Education Institutions (if applicable) | | |

Other annexes

| Name of document | Document |
|--|---|
| Metodiskie semināri | 6.1._Metodiskie semināri.docx |
| RISEBA organised methodological seminars during the reporting period | 6.1.RISEBA organised methodological seminars during the reporting period.docx |
| Grāmatu pasūtījums | Grāmatu pasūtījums.docx |
| List of books | List of books.docx |
| RISEBA konferences | RISEBA konferences.docx |
| RISEBA conferences | RISEBA conferences_ENG.docx |
| 1.1.1.Studentu skaits virzienā.docx | 1.1.1.Studentu skaits virzienā.docx |
| 1.1.1Studentu skaits virzienā EN.docx | 1.1.1Studentu skaits virzienā EN.docx |
| 1.1.3_ESG 1.docx | 1.1.3_ESG 1.docx |
| 1.1.3.Assessment of standards of ESG Part 1.docx | 1.1.3.Assessment of standards of ESG Part 1.docx |
| 5.1. ERASMUS+ Partneruniversitātes.docx | 5.1. ERASMUS+ Partneruniversitātes.docx |
| 5.1. ERASMUS+ Partneruniversities.docx | 5.1. ERASMUS+ Partneruniversities.docx |
| levēlētie mācībspēki_LV.docx | levēlētie mācībspēki_LV.docx |
| Elected Faculty member.docx | Elected Faculty member.docx |
| 13.v pielik. RISEBA augstākā vadība un lēmējinstiūcijas | _pielikums_riseba lēmējinstiūcijas_LV.doc |
| 13.v Annex. Senior Management and Decision-making Bodies | _Annex_Senior Managementand Decision-making Bodies_ENG.doc |
| 14.v Annex "Introductory Week Program" | Introductory Week Program.pdf |
| 14.v pielik. Ievadnedēļas programma | 14.v pielik. Ievadnedēļas programma_LV.docx |